

# Members' Research Service

DIRECTORATE A

The **Members' Research Service** of EPRS provides all Members of the European Parliament (MEPs) with independent, objective and authoritative analysis of, and research on, EU-related policy issues, in order to assist them in their parliamentary work. The Service is organised in **five policy units** – currently covering economic policies, structural policies, citizens' policies, budgetary policies and external policies – following the standard committee groupings used within the Parliament's administration. Its policy analysts and information specialists are at Members' disposal to support them in their work on all policy issues facing the Parliament or the EU institutions as a whole. The work and output of the five policy units is supported by a central **Publications Management and Editorial Unit**, which also serves EPRS as a whole.

## OUR SERVICES

- We provide **in-house, specialist expertise** in all areas of EU policy, based on the work of policy analysts and information specialists. The five policy units of the Members' Research Service have around 100 such experts.
- We draft **responses to specific requests from individual Members** for information, analysis and research in policy fields covered by the European Union, notably by means of tailored, **personalised briefing** to Members, both in written form and through in-person meetings. The Members' Research Service replied to some 4 000 such requests from MEPs or other official parliamentary clients in 2016, including from 75 per cent of individual Members.
- We generate a comprehensive range of **pro-active, content-rich, easy-to-read publications** (and other analysis and research) for Members collectively and the wider parliamentary community, on all major EU policies and issues, including the automatic and systematic analysis of legislative proposals at their successive stages of passage. The Members' Research Service produced some 900 publications in 2016. All EPRS publications are available at [www.europarl.europa.eu/thinktank](http://www.europarl.europa.eu/thinktank).
- We contribute **online content** in all policy fields for use on the Parliament's various external and internal websites. There were some five million page views of EPRS material alone on the internet or intranet in 2016.

## TAILORED SUPPORT FOR MEMBERS

Any MEP can make a request at any time to the Members' Research Service for information, research or analysis on EU policies, issues or legislation. The **Members' Hotline** offers clients a single point of contact for accessing all EPRS services, available at [www.eprs.sso.ep.parl.union.eu](http://www.eprs.sso.ep.parl.union.eu) or by phoning 88100. A **tailored analysis** or other personalised material will be prepared to meet Members' needs. We aim to respond to enquiries within three working hours, either answering the request straight-away or designating a specialist member of staff to deal with the matter, on a bilateral basis, providing the response in whichever format best suits the Member's requirements.



## RELEVANT PUBLICATIONS

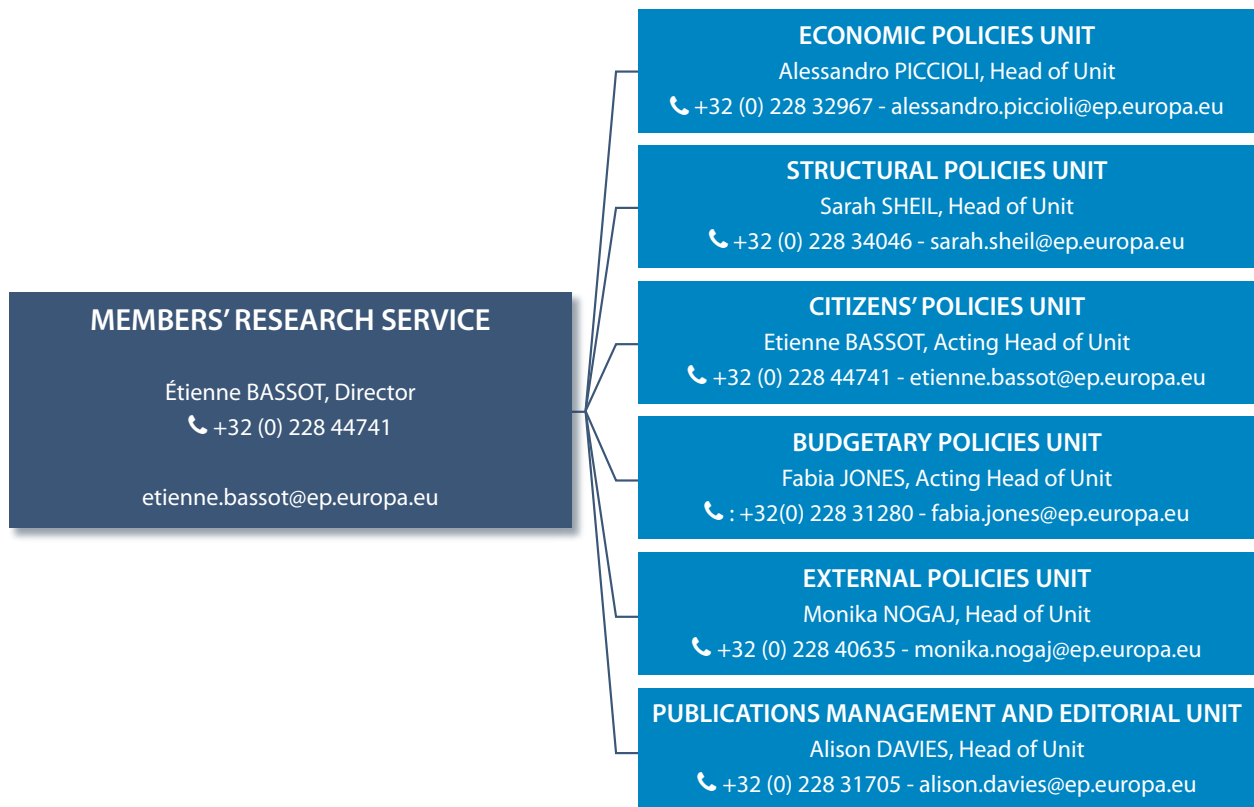
The Members' Research Service produces a wide range of analytical and factual publications, ranging from short 'at-a-glance' notes and briefings to longer in-depth analyses and studies. Series include:

- **Plenary at-a-glance notes** on the main items on the agenda of each plenary session;
- **How the EU Budget is spent:** Concise overviews of each major EU spending programme and fund, including objectives, budgetary figures, eligible measures, funded projects and an assessment of results;
- **EU Legislation in Progress:** Analysis of the progress of each major legislative proposal as it passes through the various stages of adoption and application;
- **Briefings on 'Understanding...'** certain key concepts or issues in EU or international politics, and the debates around them (from understanding the branches of Islam to understanding electricity markets in the EU);
- A series of regular publications on developments in the Union each year, including an annual Economic and Budgetary Outlook for the European Union, 'Ten Issues to Watch', and six-monthly assessments of the delivery of the European Commission.

## DIGITAL ACCESSIBILITY

EPRS publications are noted for their active use of **infographics**. All graphs and charts used in our publications are now available in one place, an online **Graphics Warehouse**, from which they may be downloaded for use by Members in their own publications or on their websites: [www.eprs.sso.ep.parl.union.eu/eprs/auth/en/GWH\\_Graphs.html](http://www.eprs.sso.ep.parl.union.eu/eprs/auth/en/GWH_Graphs.html). A similar **Map Warehouse** has recently been launched: [www.eprs.sso.ep.parl.union.eu/eprs/auth/en/GWH\\_Maps.html](http://www.eprs.sso.ep.parl.union.eu/eprs/auth/en/GWH_Maps.html). A **Statistics Warehouse** offers easy access to data from a wide range of international organisations. Undertaken in cooperation with GlobalStat.eu, it can be accessed within the EP at: [www.eprs.sso.ep.parl.union.eu/eprs/auth/en/globalstat.html](http://www.eprs.sso.ep.parl.union.eu/eprs/auth/en/globalstat.html). **Podcasts** of selected EPRS publications are available at: [www.europarl.europa.eu/rss/en/audio-podcasts.html](http://www.europarl.europa.eu/rss/en/audio-podcasts.html). **Animated infographics** on topical issues can be found at: [www.europarl.europa.eu/thinktank/en/infographics.html](http://www.europarl.europa.eu/thinktank/en/infographics.html).

## OUR ORGANISATION



[www.europarl.europa.eu/thinktank](http://www.europarl.europa.eu/thinktank)



<http://epthinktank.eu>



@EP\_ThinkTank



European Parliamentary Research Service



epinfographics/eprs



European Parliamentary Research Service