

AT A GLANCE

Policy Departments' Monthly Highlights



FOCUS

New EU own resources



Dear Reader,

As a response to the COVID-19 pandemic, the EU set up unforeseen budgetary measures to help boost economic recovery and improve resilience, notably in the form of the NextGenerationEU (NGEU) package. Russia's invasion to Ukraine has not only severely disturbed

the geopolitical situation, but also caused pressure on EU's economic resilience, energy security and supply chains, as highlighted in the Commission's Spring 2022 Economic Forecast.

With the new unexpected budgetary needs, the Multiannual Financial Framework (MFF) 2021-2027 is already reaching the limits of its flexibility. It is also important to make sure that the common borrowing under the NGEU will be paid through the EU's own resources and not by cutting the budget funding.

The studies on the revision of the Financial Regulation and on the new EU own resources provide important background information when assessing the policy choices.

*Johan Van Overtveldt, MEP
Chair of the Committee on Budgets*

New EU own resources: possibilities and limitations of steering effects and sectoral policy co-benefits

Policy Department for Budgetary Affairs



The need to repay NGEU debt, newly emerging potential genuine own resources, and mounting long term challenges for the EU have provided new impulses to the long-standing debate about a fundamental reform of the EU system of own resources.

This study assesses recent legislative proposals for the new own resources included in the interinstitutional roadmap agreed together with the NextGenerationEU programme.

Scan the QR code
to access the publication



FORTHCOMING EVENTS

PECH Artificial Intelligence and the fisheries sector

Study presentation

13 June 2022 - 15:00-16:00 - Spinelli 1G3

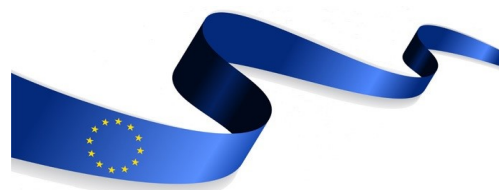
CONT EU customs control mechanisms and their possible improvement

Workshop

15 or 16 June 2022 TBC - 16:00 - 18:00

ECON Monetary dialogue preparatory meeting

16 June 2022 - 10:00 - 12:00



CONTACTS

Policy Department for Economic, Scientific and Quality of Life Policies
ECON - FISC - EMPL - ENVI - ITRE - IMCO
poldep-economy-science@ep.europa.eu

Policy Department for Structural and Cohesion Policies
TRAN - REGI - AGRI - PECH - CULT
poldep-cohesion@ep.europa.eu

Policy Department for Citizens' Rights and Constitutional Affairs
JURI - LIBE - AFCE - FEMM - PETI
poldep-citizens@ep.europa.eu

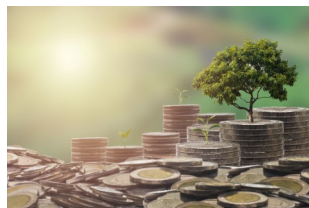
Policy Department for Budgetary Affairs
BUDG - CONT
poldep-budg@ep.europa.eu

Policy Department for External Relations
AFET - SEDE - DROI - DEVE - INTA
poldep-expo@ep.europa.eu

RECENT PUBLICATIONS

Future of European financial architecture for development

Policy Department for External Relations



The EU is streamlining the European Financial Architecture for Development (EFAD), which includes several EU, European and MS institutions funding EU development goals. Organised for DEVE, this workshop considered the EFAD and its future. Two panels explored scenarios, the EU's plans, and the potential for better coordination and policy guidance of the institutions involved – including the EIB, the EBRD and others in the EU and Member States – with a 'Team Europe' approach.



SME access to finance and promoting a greener economy

Policy Department for Economic, Scientific and Quality of Life Policies



SMEs will play a key role in the green transition, especially in improving the energy efficiency of housing. However, to achieve this, diversified funding will be needed. The study requested by the ECON committee looks at how COVID-19-influenced CMU (Capital Markets Union) initiatives can help SMEs, especially microenterprises working in the green economy, to get access to finance. It concludes that the CMU package is helpful but that more could be done.



Artificial Intelligence and the fisheries sector

Policy Department for Structural and Cohesion Policies



There is a growing need in fisheries science and management for larger amounts of data and highly trained experts, in which digitalisation and AI should play a central role. This study reviews current AI systems legislation, the AI techniques definition proposed by the AI Act and main applications of AI methods in the fisheries sector. It offers policy recommendations to achieve a better use of AI systems in the fisheries sector.



Democratic oversight of the police

Policy Department for Citizens' Rights and Constitutional Affairs



Policing requires legitimacy, transparency and accountability. This study provides background information concerning police ethics, accountability and oversight across the EU. It shows that existing EU tools and instruments can contribute to enhance police accountability. It also identifies some gaps and weaknesses. Recommendations are provided in order to remedy the gaps and weaknesses.



FORTHCOMING PUBLICATIONS

- AFCO** Enhancing mechanisms on citizens' participation in EU decision-making - June 2022
- AFET** A new agenda for the Mediterranean - June 2022
- CONT** Possible solutions for Missing Trader Intra-Community fraud - June 2022
- ENVI** Briefing on UN Ocean Conference, Lisbon, 27 June - 1 July 2022 - June 2022
- REGI** Social challenges in cities - June 2022

JOIN THE NETWORK

Policy departments provide in-house and external expertise to support EP committees and other parliamentary bodies in shaping legislation and exercising democratic scrutiny over EU policies.

Send your details to:

ep-policydepartments@ep.europa.eu

All publications:
[www.europarl.europa.eu/
supporting-analyses](http://www.europarl.europa.eu/supporting-analyses)



Disclaimer: The items contained herein are drafted by the policy departments of the European Parliament and are provided for general information purposes only. The opinions expressed in this document are the sole responsibility of the author(s) and do not necessarily represent the official position of the European Parliament. © Images and photos used under the license or the right of use by the European Parliament.