

Impact Assessment and European Added Value

DIRECTORATE B

EPRS services in the fields of impact assessment and European added value help to strengthen the European Parliament's practical capacity for **scrutiny and oversight of the executive** at the successive stages of the EU legislative and policy cycles – from the evolution and proposition of EU law and policy to their implementation, enforcement and effectiveness in practice – so contributing to the quality of law-making itself. They support parliamentary committees in their work in these fields – notably on European added value, ex-ante impact assessment and ex-post evaluation – including in the identification, quantification and justification of parliamentary initiatives, and on the implementation and effectiveness of EU law and policies in practice.

The **Directorate for Impact Assessment and European Added Value** is organised in five units dealing with various aspects of ex-ante or ex-post evaluation of EU legislation and policies, and scientific foresight. Between 2014 and 2019, the Directorate produced over 750 publications, with work undertaken for 20 parliamentary committees.

POLICY CYCLE AS A WHOLE

The Directorate acts as an **information and analysis centre on ex-ante and ex-post work** being done by the European Parliament, European Commission and other bodies, and it provides analytical material on such policy-cycle issues, preparing notably horizontal **Rolling Check-lists** or databases, to provide key reference material, in easily accessible form, to assist parliamentary committees in deciding what type of scrutiny to engage in, and when and how best to undertake such work.

EX-ANTE EVALUATION

The **Ex-Ante Impact Assessment Unit** analyses the quality of impact assessments (IAs) produced by the European Commission – in the form of **Initial Appraisals** of these documents, which are routinely supplied to parliamentary committees in advance of their consideration of new legislative proposals – and then offers the committees a range of follow-up services, including more detailed appraisals of Commission IAs, substitute or complementary IAs, and/or IAs on parliamentary amendments.

The **European Added Value Unit** analyses the potential benefit of future action by the European Union through **Cost of Non-Europe Reports** in policy areas where greater efficiency or a collective public good could be realised through common action at European level, it provides **European Added Value Assessments** to underpin legislative initiative reports put forward by parliamentary committees, and has a range of products that identify the added value of existing EU policies in practice.

All EPRS publications are available at www.europarl.europa.eu/thinktank



EX-POST EVALUATION

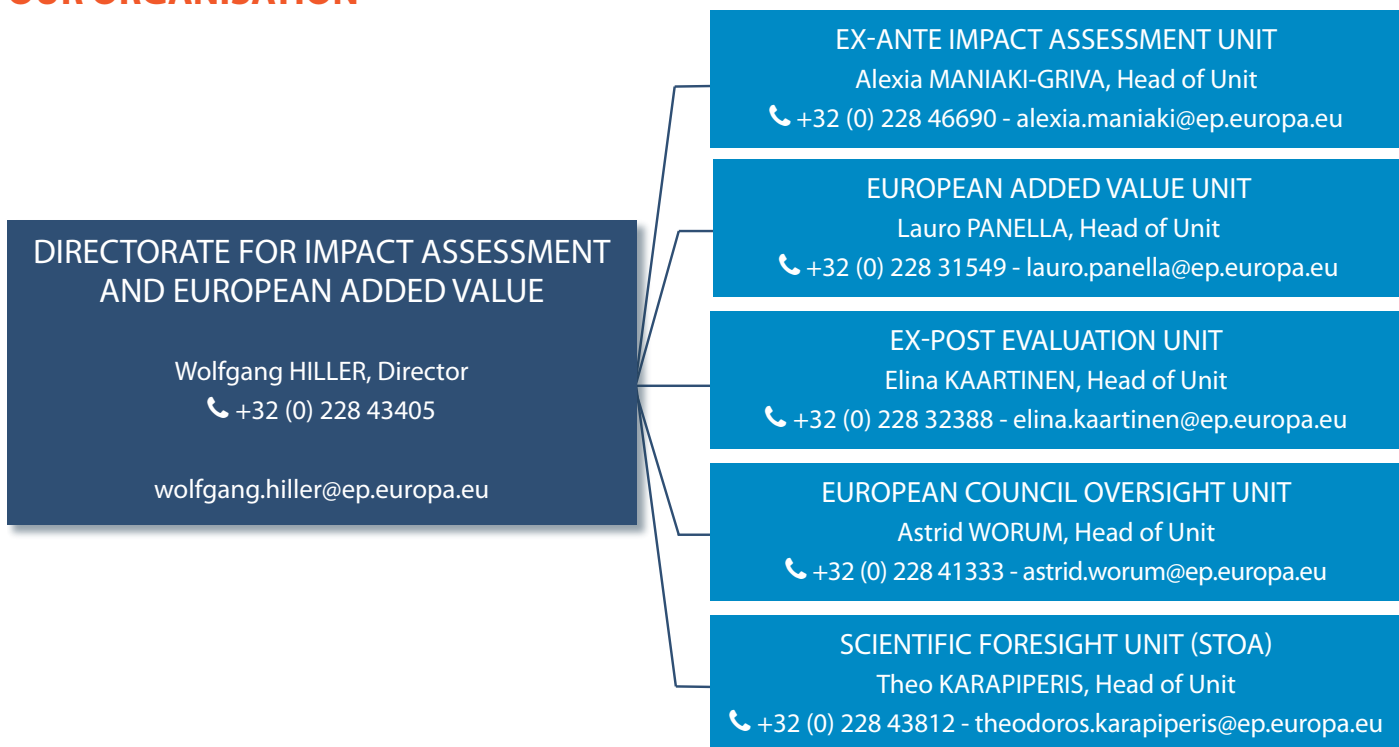
The **Ex-Post Evaluation Unit** assists parliamentary committees in their ex-post evaluation work, notably by providing: (i) short **Implementation Appraisals** of the operation of existing EU legislation in practice, whenever a new proposal to update such legislation is foreseen in the European Commission's Annual Work Programme: these appraisals are delivered to the relevant parliamentary committee in advance of the latter's consideration of the new proposal in question; (ii) longer and more detailed **European Implementation Assessments** on how specific existing EU laws or policies are operating in practice, drafted each time that a parliamentary committee undertakes an own-initiative Implementation Report on an existing law or policy, providing a detailed analysis of the experience to date; and (iii) any other analyses or studies on implementation issues that may be useful.

The **European Council Oversight Unit** monitors and analyses the delivery of the European Council (of EU heads of state or government) in respect of the commitments made in the conclusions of its meetings, as well as of its various responsibilities either in law or on the basis of intergovernmental agreements. It maintains a **Rolling Check-list** of all such commitments and/or responsibilities, provides routine briefing notes on their degree of attainment within the Council system, and undertakes detailed research in fields related to the latter.

SCIENTIFIC FORESIGHT

The **Scientific Foresight Unit** (STOA) carries out research and provides strategic advice in **science and technology options assessment** and **scientific foresight**, and it hosts the **Centre for Artificial Intelligence** and the **European Science-Media Hub** (ESMH), a platform to promote networking, training and knowledge sharing between the EP, the scientific community and the media. The Unit undertakes studies and organises events under the guidance of the **Panel for the Future of Science and Technology** (STOA), composed of 27 MEPs nominated by eleven parliamentary committees.

OUR ORGANISATION



All EPRS publications are available at www.europarl.europa.eu/thinktank

www.europarl.europa.eu/thinktank



<http://epthinktank.eu>



@EP_ThinkTank



European Parliamentary Research Service



epinfographics/eprs



European Parliamentary Research Service

For access to all EPRS services, please see: www.eprs.sso.ep.parl.union.eu | September 2021