

# AT A GLANCE

## Policy Departments' Monthly Highlights



### FOCUS

#### Cohesion Policy fighting climate change



Dear Reader,

Cohesion policy plays a central role in enabling the European Union to achieve its objectives and meet its climate commitments. By 2027, 30% of cohesion funds will be used in projects meant to fight climate change. We also set up the Just Transition Fund to help regions heavily dependent on coal to get out of this extremely impactful fossil energy.

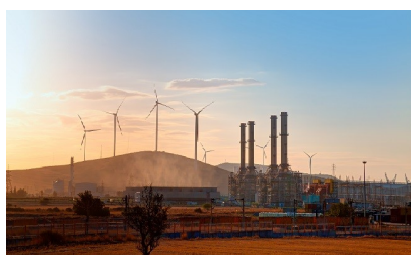
Monitoring the implementation of the main principles, which we have enacted for the future cohesion policy is an imperative for our parliamentary committee. We have asked several contractors to carry out studies on this subject, of which this one is part. We will continue to do so in the interest of European citizens and the duty of transparency of the institutions.

The transition to a carbon neutral society is an obligation for the future. As Chair of the Regional Development Committee, I am 100% committed to it.

*Younous Omarjee, MEP  
Chair of the Committee on Regional Development*

#### Cohesion Policy in EU Coal Regions

*Policy Department for Structural and Cohesion Policies*



Decarbonisation brings both significant challenges and opportunities for coal regions.

The study analyses the implementation and impact of Cohesion Policy, including Just Transition Funds, in EU coal regions.

The study concludes that Cohesion Policy has made, and is likely to continue to make, a real contribution to achieving smarter, greener and more socially connected development of EU coal regions.

Scan the QR codes  
to access the publications



### FORTHCOMING EVENTS

#### **AGRI** The impact of extreme climate events on agriculture production in the EU

Study presentation  
24-25 April, room tbc

#### **DROI** Towards an International Anti-Corruption Court

Workshop  
20 March 2023 17.00-18.30, Spinelli 3G2

#### **ENVI** Health working group **Advanced therapy medicinal products**

Workshop  
22 March 2023 12.30-14.00, room tbc



### DID YOU KNOW?

You can check all past and future events organized by committees and policy departments on the committee website under the **Events tab**.

### CONTACTS

**Policy Department for Economic, Scientific and Quality of Life Policies**  
ECON - FISC - EMPL - ENVI - ITRE - IMCO  
[poldep-economy-science@ep.europa.eu](mailto:poldep-economy-science@ep.europa.eu)

**Policy Department for Structural and Cohesion Policies**  
TRAN - REGI - AGRI - PECH - CULT  
[poldep-cohesion@ep.europa.eu](mailto:poldep-cohesion@ep.europa.eu)

**Policy Department for Citizens' Rights and Constitutional Affairs**  
JURI - LIBE - AFCE - FEMM - PETI  
[poldep-citizens@ep.europa.eu](mailto:poldep-citizens@ep.europa.eu)

**Policy Department for Budgetary Affairs**  
BUDG - CONT  
[poldep-budg@ep.europa.eu](mailto:poldep-budg@ep.europa.eu)

**Policy Department for External Relations**  
AFET - SEDE - DROI - DEVE - INTA  
[poldep-expo@ep.europa.eu](mailto:poldep-expo@ep.europa.eu)

## RECENT PUBLICATIONS

### Prisons and detention conditions in the EU

*Policy Department for Citizens' Rights and Constitutional Affairs*



The fundamental rights concerns stemming from degrading prison conditions make this issue worth examining from an EU-law perspective. This study, requested by the LIBE Committee, aims to provide background information and policy recommendations on prison and detention conditions in the EU, on the basis of European and national regulations, legislation, policies and practices. It assesses the initiatives taken at EU level to support compliance with existing European standards.



### Social tracking methodology for the EU budget

*Policy Department for Budgetary Affairs*



The EU tracks social expenditure for several reasons, ranging from ensuring financial control to assessing whether policies make the desired impact. The study:

- examines the state of social tracking in the MFF and the RRF;
- explores how the scrutiny of EU social spending could be improved and enhanced;
- proposes a pilot study on theory-based monitoring as a potential innovation in social tracking.



### Enhancing CSDP Missions' response to disinformation

*Policy Department for External Relations*



The EU's CSDP missions and operations have been forced to operate in increasingly hostile information environments in recent years.

The paper requested by SEDE and ING2 examines disinformation affecting CSDP missions and operations. It concludes that while these missions and operations are not targeted systematically, their ability to respond to attacks is limited. The authors propose reinforcing their capabilities in contested information environments.



### Recent UK financial sector regulation - implications for the EU

*Policy Department for Economic, Scientific and Quality of Life Policies*



Brexit poses unique challenges for EU policymakers as the most important financial centre in Europe is now outside its regulatory framework. The study requested by ECON committee looks at expected medium- to long-term divergence between EU and UK regulation and at options for future cooperation. The study finds that granting of equivalence to the UK is likely and feasible only for a few financial sector segments and will depend on the broader EU-UK political relationship.



## FORTHCOMING PUBLICATIONS

- CULT** Protecting cultural heritage from armed conflicts in Ukraine and beyond - March 2023
- FEMM** Impact of the use of social media on women and girls - April 2023
- CONT** Transparency and accountability of EU funding for NGOs active in EU policy areas within EU territory - June 2023
- INTA** Global value chains: strategic synergies between external trade policy and internal economic initiatives in the EU - March 2023
- EMPL** Minimum health and safety requirements for the protection of mental health in the workplace - April 2023

## JOIN THE NETWORK

Policy departments provide in-house and external expertise to support EP committees and other parliamentary bodies in shaping legislation and exercising democratic scrutiny over EU policies.

Send your details to:

[ep-policydepartments@ep.europa.eu](mailto:ep-policydepartments@ep.europa.eu)

All publications:  
[www.europarl.europa.eu/  
supporting-analyses](http://www.europarl.europa.eu/supporting-analyses)



**Disclaimer:** The items contained herein are drafted by the policy departments of the European Parliament and are provided for general information purposes only. The opinions expressed in this document are the sole responsibility of the author(s) and do not necessarily represent the official position of the European Parliament. © Images and photos used under the license or the right of use by the European Parliament.