



# PALM OIL LOCAL PERSPECTIVE

**Jakub Kvapil**

Faculty of Social Studies, International Relations, Charles University in Prague

Coordinator of campaign and platforms, NGO Lestari

[www.lestari.cz](http://www.lestari.cz)

# ABOUT US



## Campaigns

We run campaigns in Czech Republic and we are also active in foreign countries where palm oil industry poses a direct threat to the environment and precious ecosystems.



## Projects

We cooperate with local organizations with a focus on support of environmentalist and research activities.



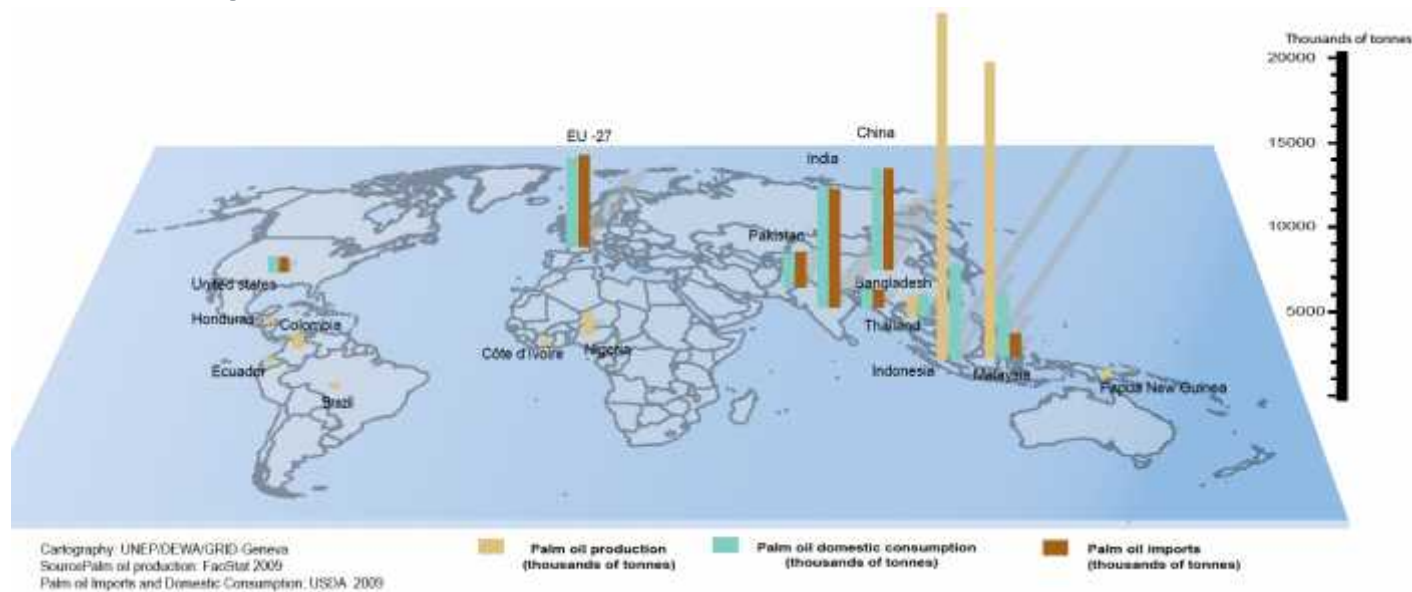
## Platforms

We share expert knowledge, financial resources, technology and support research by establishing international platforms for cooperation.

# THREAT TO TROPICAL ECOSYSTEMS WORLDWIDE



Oil palm is originally from equatorial Africa. Today it is most planted in SE Asia, but is spreading to the rest of the tropics fast.





We share the responsibility and our actions influence the future outcomes.



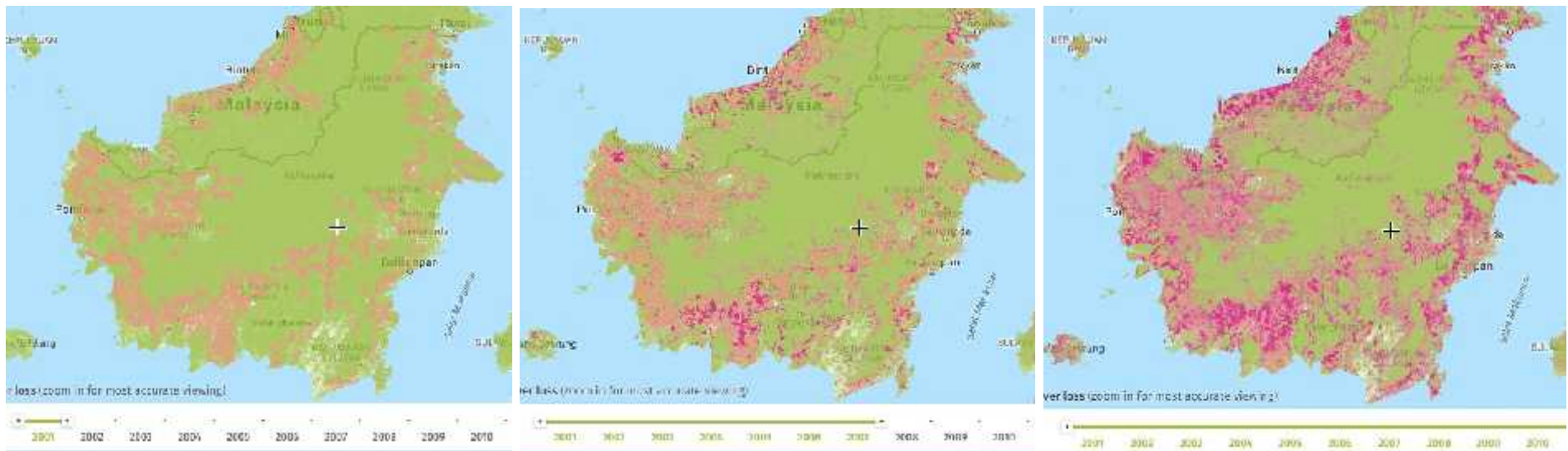




- ✓ In SE Asia this problem is largely linked to palm oil production.
- ✓ Further expansion from Sumatra and Borneo is predicted, most recently to Papua and Sulawesi.
- ✓ It is predicted that production of palm oil will rise from 25 Mt in 2012 to 32,5 Mt in 2021 (OECD, 2012).



# DEFORESTATION LINKED TO PALM OIL PRODUCTION



Data from 2001, 2007, 2014

Light brown: deforestation

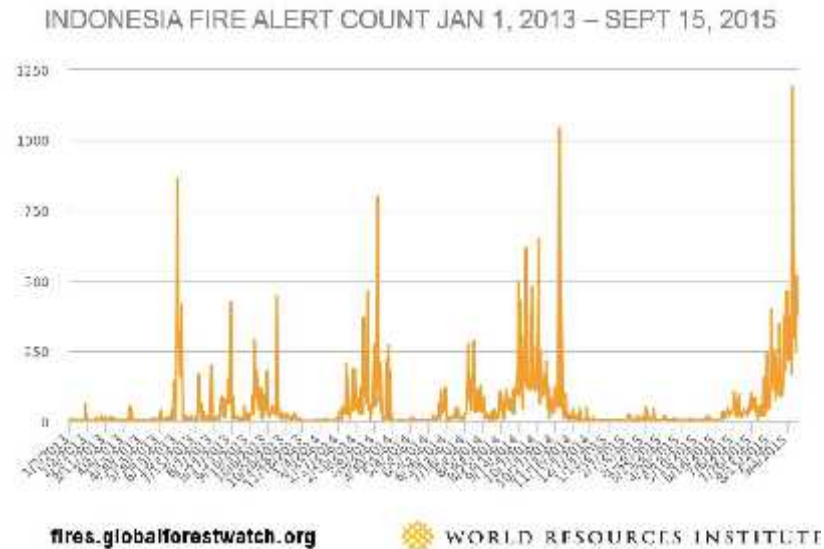
Green: forest

Pink: deforestation

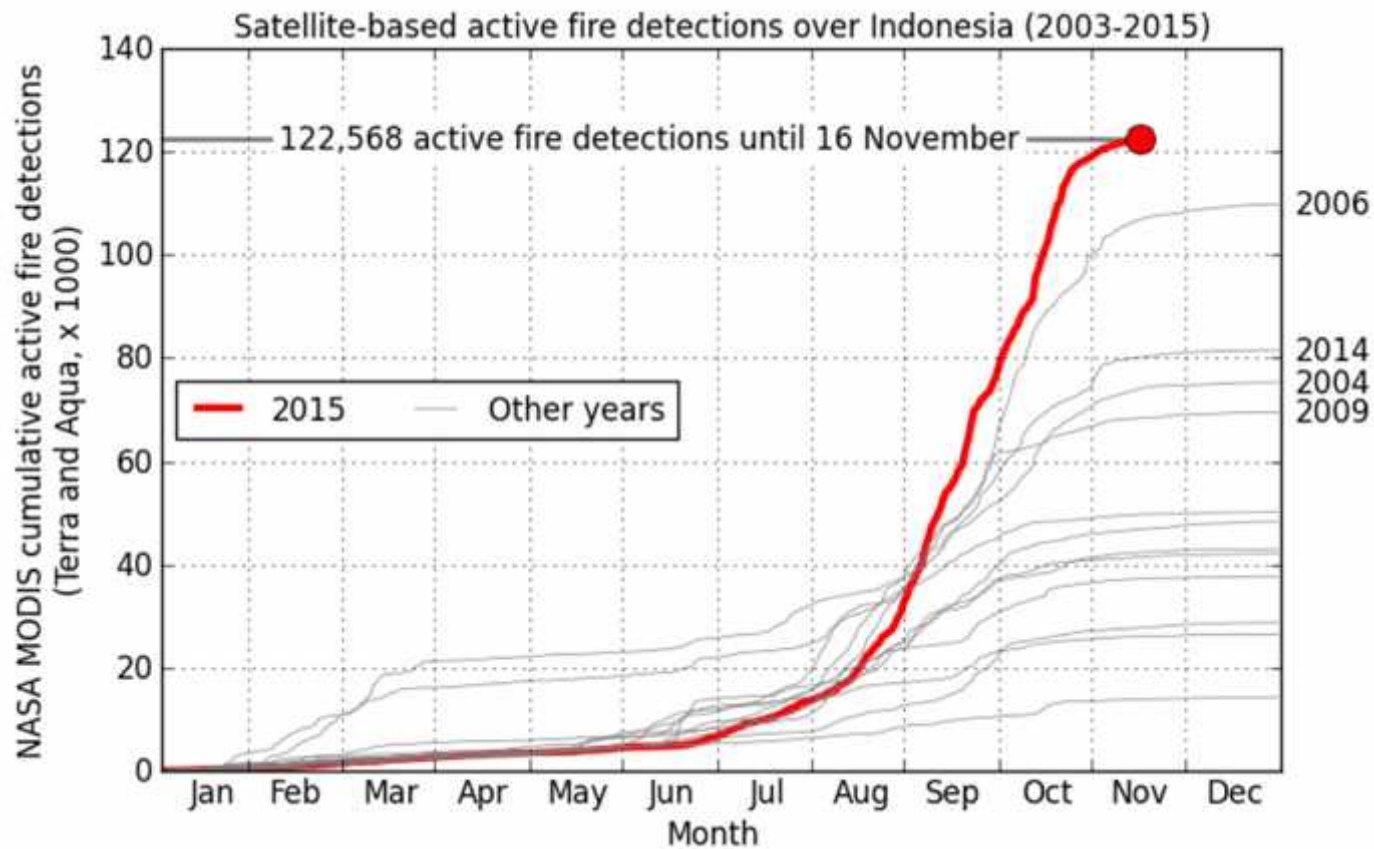
## FOREST FIRES

- ✓ More frequent, due to longterm soil degradation and loss of retention capacities, which leads to Dehydration.
- ✓ More destructive. Fire spreads more easily in the dry forest.

- ✓ Slash and burn strategy is often a cause of fires. Common are also intentionally ignited fires.



## FOREST FIRES





## FOREST FIRES - IMPACTS



### Biodiversity threat

- Biodiversity hotspots under growing pressure



### Threat to humans

- Respiration diseases
- Reported deaths
- Greenhouse gas emissions

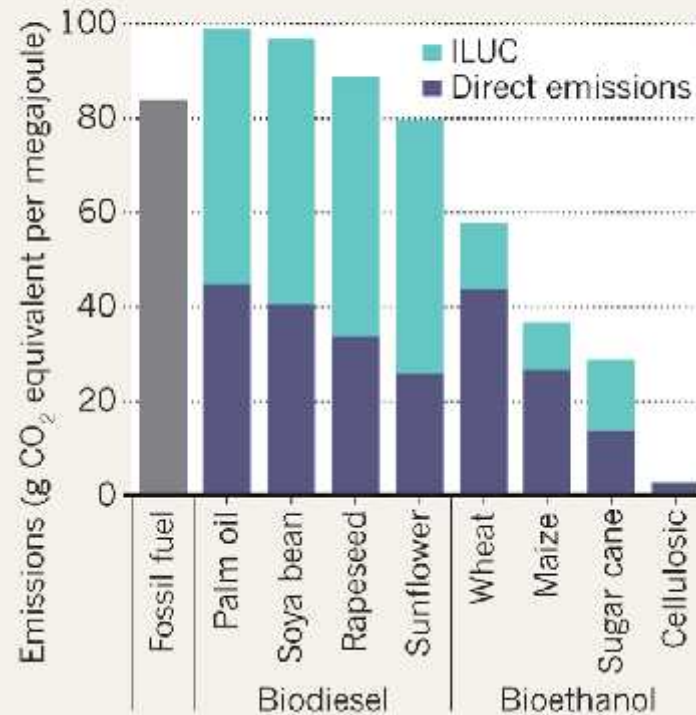


# CARBON EMISSION



## CARBON CONUNDRUM

Indirect land-use change (ILUC) effects mean that some biofuels produce more carbon emissions than fossil fuel.



International Food Policy Research Institute

# FIRE REPORT FROM 16.3.2016

Source: Global Forest Watch

## PAST 48 HOURS – 120 ACTIVE FIRES



# INDONESIAN BIODIVERSITY



**Second richest biodiversity hotspot, even though it covers only 1% earth's surface:**

- **10% of the world's known plant species**
- **12% of mammal species**
- **17% percent of all known bird species**



**High number of endemic species**



**Critical Endengared Species (IUCN Red List)**

- **Javan Rhinoceros: 40 – 60 animals in Java and 6 individuals in Vietnam**
- **Sumatran Rhinoceros: 275 individuals, though probably more than 220**
- **Sumatran Orangutan: around 7,300 animals**
- **Sumatran Tiger: *around 400 – 500 animals***

# INDONESIAN BIODIVERSITY - IMPACTS



## Threats

- Extensive deforestation – loss of natural habitats
- Forest fires
- Monoculture plantations
- Infrastructure
- Degradation of soil and water sources
- Conflicts with people – wildlife crime





# SOIL AND WATER SOURCES DEGRADATION

- ✓ Irrigation of watercourses
- ✓ Loss of underground water retention capability
- ✓ Soil erosion



# SOIL AND WATER SOURCES DEGRADATION - IMPACTS



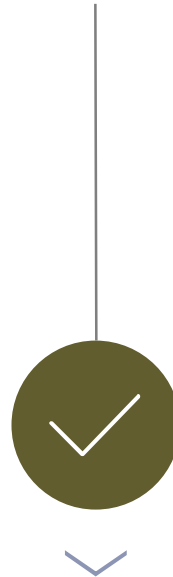
## Impacts on humans

- **Floods**
- **Contamination of water sources** health complications, massive fish kills
- **Farming problems due to underground water loss**
- **Effect on aquatic fauna**



**Deforestation** – Widespread transformation of local forest into palm oil plantations leads to massive floods up to 12 times a year, thanks to loss of retention capacities of soil.





*„Think globaly, act localy“*



**Biofuels (with accent on 1st generation)**



**Food supply**



**Cosmetics, druggist products, detergents**



**Certification**



# THANK YOU FOR YOUR ATTENTION!

---

**If you have any question, contact  
us, We are at your service**



[www.lestari.cz](http://www.lestari.cz)