

WE
CAN DO
SO MUCH
TOGETHER

HOW TO IDENTIFY NEW RESEARCH CHALLENGES AND NEW INSTRUMENTS LIKE MIGRATION, DEFENCE, EUROPEAN INNOVATION COUNCIL? - On the way to FP9

PUBLIC HEARING

**"What Future for EU-Research Policy:
Taking Stock and looking ahead"**

29 november 2016

WE TRANSFORM TECHNOLOGY INTO GDP



1,400 PEOPLE
ON STAFF

102,6 MILLION
EUROS

>4,000 CLIENTS

EARTO: European Association of Research and Technology Organisations

EARTO VISION

Technology for a Better World

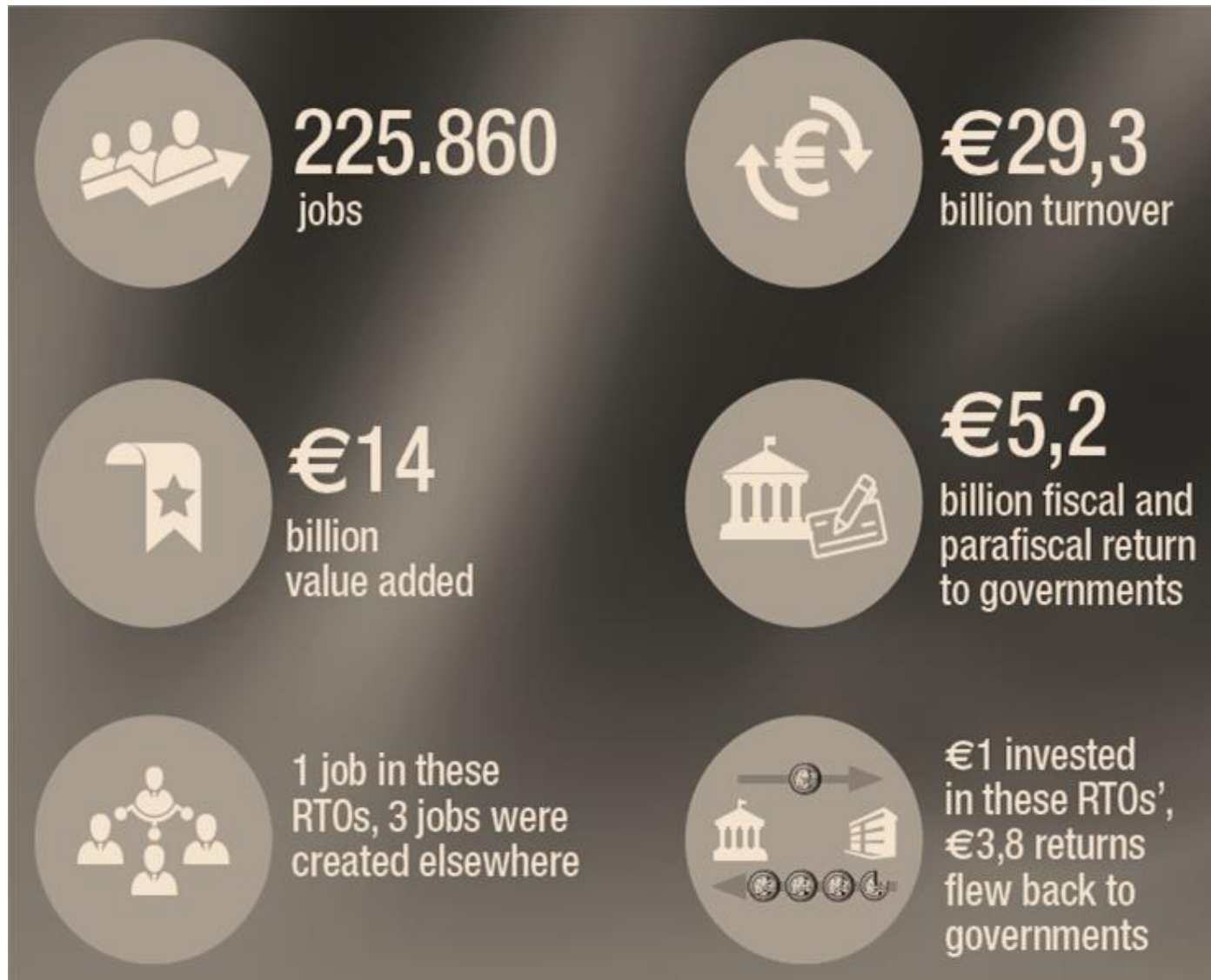
EARTO MOTO

Impact Delivered!



IMPACT OF 9 RTOS IN 2014

CEA, DTI, FRAUNHOFER, IMEC, SINTEF, SP, TECNALIA, TNO, VTT



EUROPE DOES **NOT** INNOVATE AS OTHERS DO





"Europe has excellent science, but we lack disruptive market-creating innovation. This is what is needed to turn our best ideas into new jobs, businesses and opportunities."

Carlos Moedas,
European Commissioner for Research,
Science and Innovation

#EU_EIC

 **@Moedas**

The EU is making **major efforts to boost innovation**, but is **losing the race on scaling up disruptive, market-creating innovation**.

RANKING MIT 2016

50 Smartest Companies

“The companies that best combine innovative technology with an effective business model.”

<https://www.technologyreview.com/lists/companies/2016/>

1 Amazon

2 Baidu

3 Illumina

4 Tesla Motors

5 Aquion Energy

6 Mobileye

7 23andMe

8 Alphabet

9 Spark Therapeutics

10 Huawei

USA, CHINA, ISRAEL

EUROPE IS ON THE POINT TO DECIDE ITS INNOVATION MISSION (*)

**Increased level of consciousness on the
importance of the investment in R&I:**

- For maintaining and improving the European economic situation.
- To reach the expected impact:
 - Economic growth
 - Job creation
 - Solve societal challenges

**WE SOLVE
REAL
PROBLEMS**

PUBLIC
(local, regional, national)

RTOs

R&I Policy Advisors

**Providing R&I Solutions
to Societal Challenges**

Multi-
disciplinary

R&I
Infrastructures

Multi-
stakeholders &
Partnerships

SCIENCE

TRL 3

**Supporting
the industry**

Large
Enterprises

SMEs

RTOs'
Spin-offs

TRL 7

**MARKET /
INNOVATION**

PRIVATE



CLOSENESS TO COMPANIES

Participation of EARTO Members in H2020 is positively correlated to the involvement of industrial partners:

- With EARTO Members 31% (33% considering only the 10 largest RTOs)
- Without EARTO Members 25%

IDENTIFICATION OF R&I PRIORITIES

- Technology assessment in support of regional, national and European authorities, helping to define the policy connected with R&I.
- Contribution in a collective and coherent way – through EARTO- to the consultations related to midterm evaluation of H2020 and FP9.
- Thanks to the strategic positions in PPPs, JTIs, EIPs and strategic alliances, we are involved in obtaining contributions from industrial sectors and collectives connected with societal challenges



TOWARD FP9: Recommendations from the RTOs' point of view.

Toward FP9: recommendations from the RTOs' point of view

Prioritise Impact

- Europe needs to focus on interventions that matter and bring clear benefits to European citizens.
- Citizens need to see the impact of EU research in terms of economic growth, generation of new jobs and contribution to solving their challenges.

Strengthen European Collaborative Applied Research

- The cooperative projects, bringing together the interests of companies, RTOs and universities, are the genuine way of the H2020 and for the future FP9 program to contribute to the competitiveness of our industry and, therefore, this scheme must be strengthened.
- This support is crucial to have real impact in terms of job creation and economic growth.

Ensure a Balance between the 3 Funding Pillars

- Balance across the whole research and innovation chain from fundamental to market-innovation driven research.
- Making the appropriate balance between those pillars will require looking at their differences in terms of impact, lead times, leverage effects and in particular their specific European added-value.

Toward FP9: recommendations from the RTOs' point of view

Target Europe's Innovation Capacity

- The impact of EU R&I funding is connected with our capacity to improve our innovation efficiency.
- Successful innovation is linked to effective collaboration and cooperation between the actors in the innovation chain to achieve the journey to commercial success..
- The setting up of the EIC would help to provide:
 - ✓ Streamlining Existing Instruments (SMEs instrument, EIT KICs) & Organizing Complementary Support.
 - ✓ Take stock of Existing Research & Innovation Infrastructures.
 - ✓ Support the growth of innovative research-driven entrepreneurship.

Promote Collaborative Participation by Industry

- European industry, in many sectors (vehicles, aeronautics, capital goods, energy ...), is world leader. To do this, in order to compete in a globalized economy and to be a reference in exports from Europe, its associated products and services must be innovative. This requires the strengthening of industrial research and innovation.
- RTOs have demonstrated its capacity to promote industrial participation in H2020, specially in connection with instruments related to medium to high TRLs.

Toward FP9: recommendations from the RTOs' point of view

Ensure Grant-Based R&I Funding as Key Element

- The EU R&I model should continue to be based on having grant programmes like Horizon2020 supporting cooperation among various R&I stakeholders.

Taking Stock of Existing Research & Innovation Infrastructures

- The issue at stake today is not only to map these infrastructures but also to better understand how to efficiently network those infrastructures across Europe to further support innovation, especially by SMEs.

Continue Efforts on Simplification

- Tackling the very low success rates present at H2020 should be a key priority in the simplification efforts for the future FP9.
- In the mean time, in the remaining part of H2020, pilot actions should be deployed in this direction.



Visit our blog:
<http://blogs.tecnalia.com/inspiring-blog/>



www.tecnalia.com