



Forests and climate change

Peter Mayer

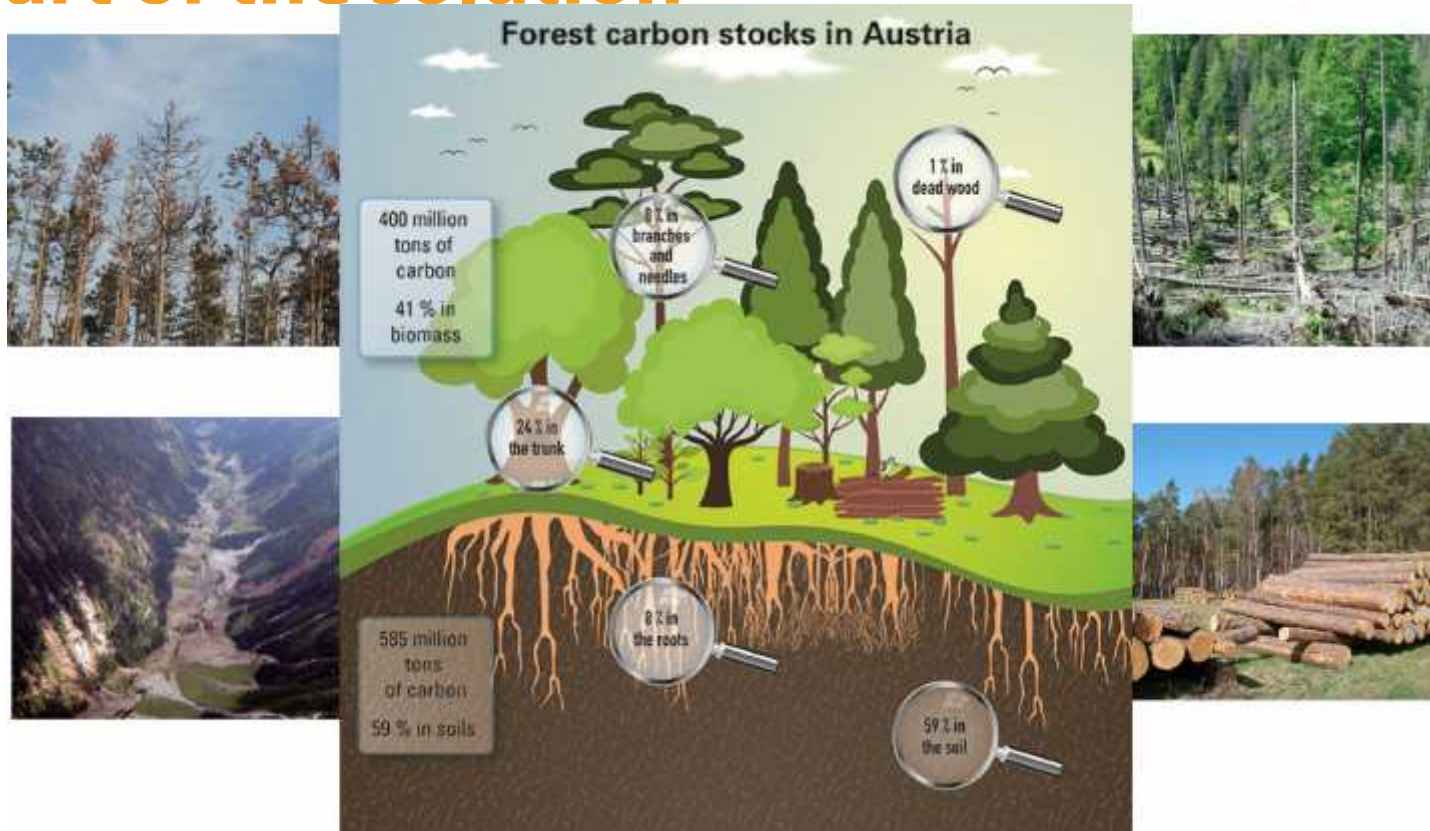
Managing Director

Austrian Research Centre for Forests

Meeting the EU's 2030 emission reduction targets: the role of the land use and forestry sector

Brussels, 30 January 2017

Forests – affected by climate change and part of the solution



Climate Policy – multilevel governance



International Agreements

United Nations Framework Convention on Climate Change (UNFCCC)

- > COP 3: Kyoto (1997)
- > COP 18: Doha (2012)
- > COP 21: Paris (2015)

- 2020 climate & energy package
- 2030 climate & energy framework
- Roadmap for a Low-Carbon Economy by 2050

EU Policies

National Implementation

- Climate Change Act
- National GHG inventories reporting commitments
- Adaption Strategy
- Climate and Energy Fund
- Climate Strategy
- Climate protection initiative „klimaaktiv“

Other policies – target conflicts ?!

Biodiversity

- 2020 climate & energy package
- 2030 climate & energy framework
- Roadmap for a Low Carbon Economy

Bioeconomy

International agreements

- United Nations Framework Convention on Climate Change (UNFCCC)
- COP 3: Kyoto (1997)

Sustainable Development Goals

EU policies

Forest Strategy

National implementation

- Climate Change Act
- National GHG inventories reporting commitments
- Adaption Strategy
- Climate and Energy Fund
- Climate Strategy
- Climate protection initiative „klimaaktiv“

Forests and Wood – more than a C-sink

The effects of sustainable forest management and harvested wood products on the GHG balance along the value chain

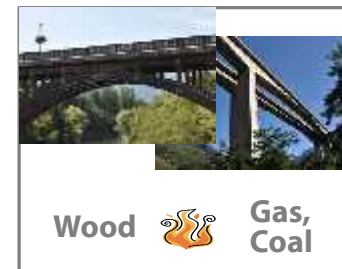
- “Forest Management” incl. “Harvested Wood Products” accounted in the 2nd Commitment Period
- Emissions/removals of substitute products to wood products are not/ not directly assessed in the GHG balance
- A GHG optimized strategic planning requires a common GHG assessment including substitute emissions



Forest management



Wood products

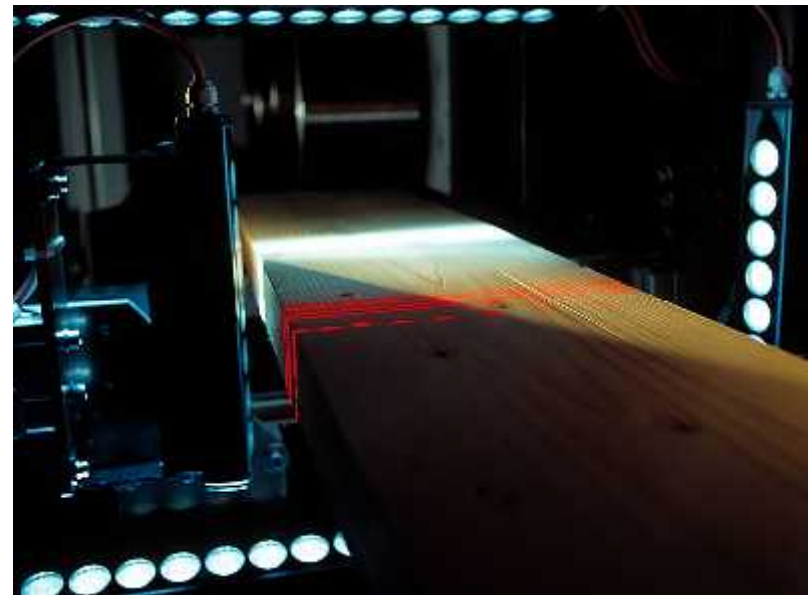


Substitution – product and energy wood

Wood chain project for Austria

5 Scenarios

- **Reference:** Business as usual
- **1a:** Increasing demand of wood for energy
- **1b:** Increasing demand of wood for products
- **1c:** like 1b but optimistic import possibilities for round wood
- **2:** reduced harvest, stock increase based on implementation of enhanced nature protection measures
- **0:** *Immediate abandoning of harvesting activities*



Wood chain project for Austria

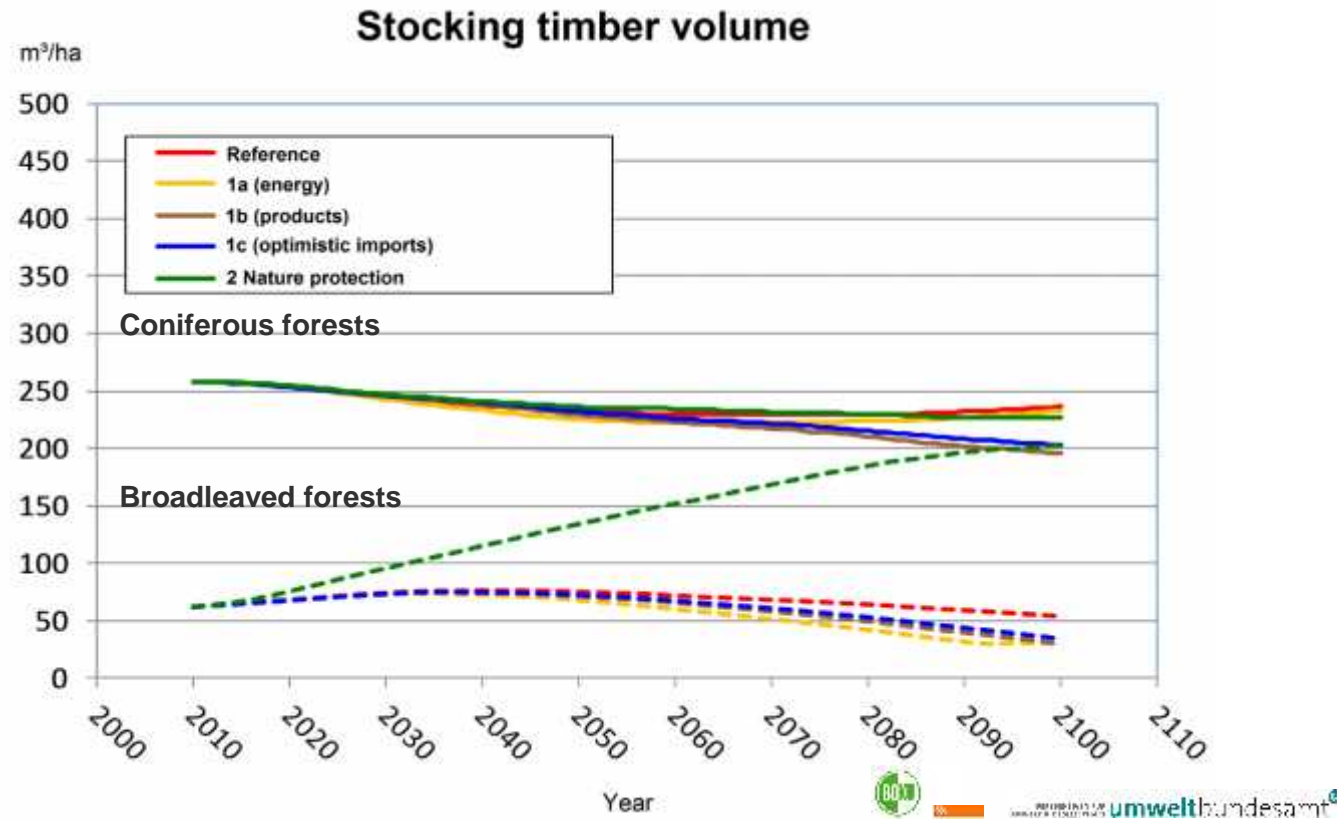


Methods

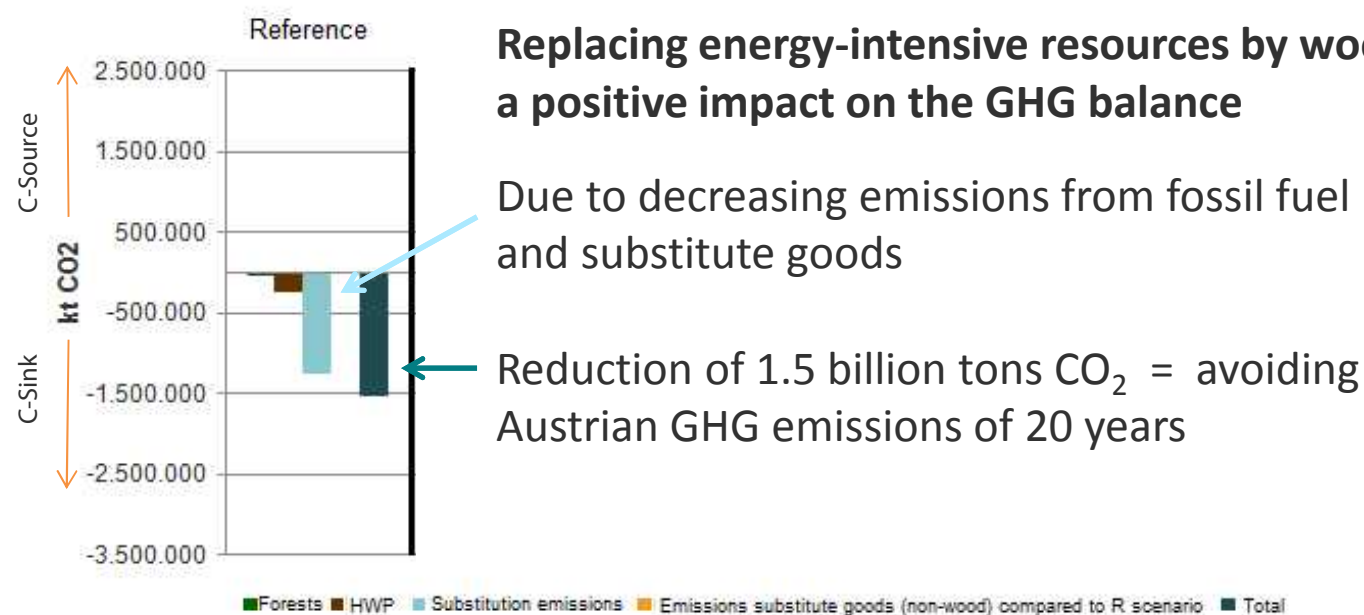
Four models were used

- CALDIS: Forest Growth and yield model (BFW)
- YASSO: Soil C model (BFW)
- FOHOW2: Economic wood products model (University BOKU)
- GEMIS: Ecobalance model (Environment Agency)

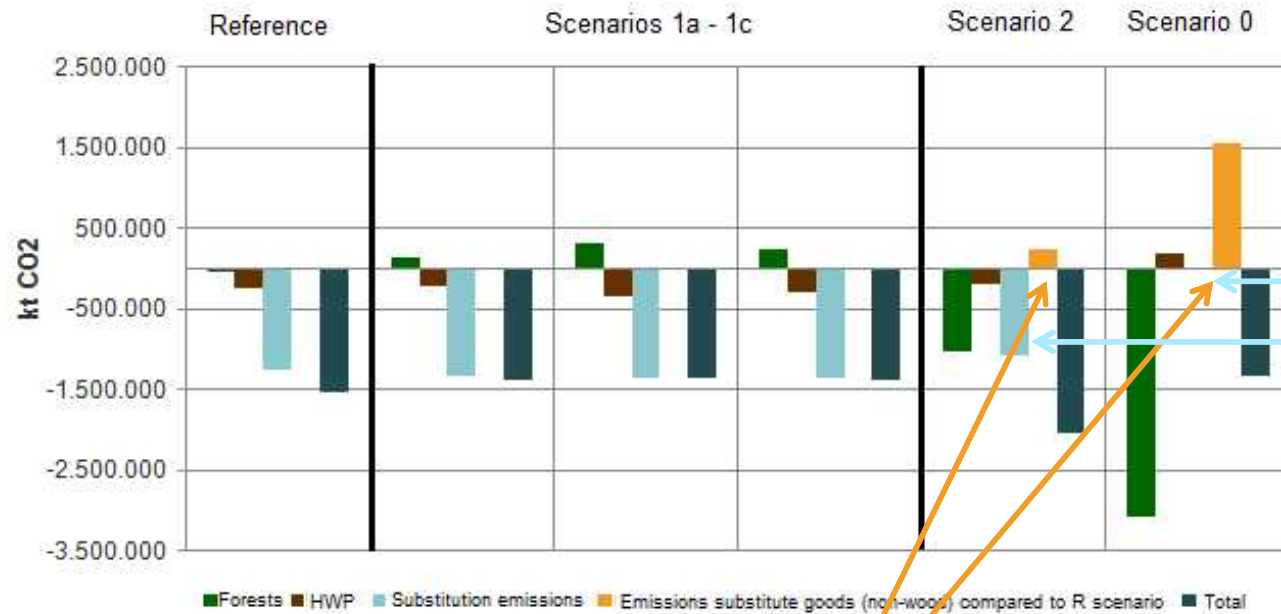
Scenarios: Effects on wood utilization and stocking volume



Substitution effect



Substitution effect

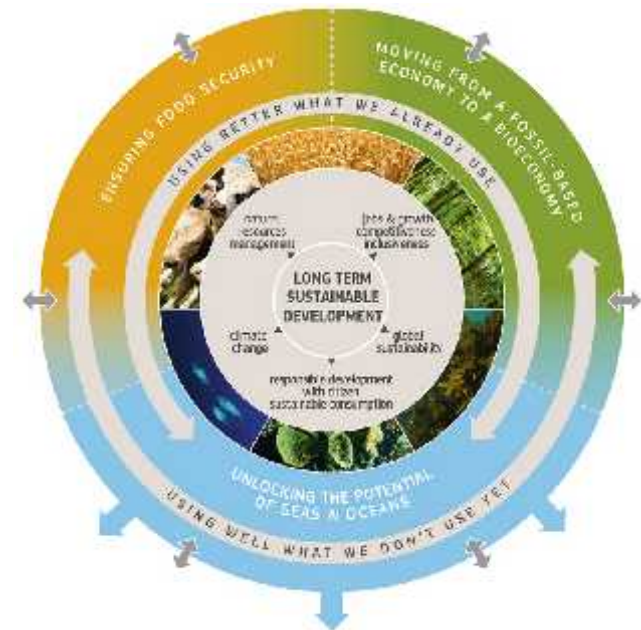


Avoided emissions are lower or not existent compared to other scenarios

CO₂-emissions from substitute goods lead to poor GHG balance

Key messages

- Sustainable **forest** management and **wood** utilization has a **positive impact** on GHG balance
- **Substitution** effects and avoided emissions lead to a **positive** GHG balance
- Forests fit for climate change – understanding **adaptation** important
- **Cross sectoral** policy making decisive
- **Long-term planning** for forests and climate change demands forward-looking strategies > 2030





We **know**
all
about forests

Picture | Filmstyle from „See Aural Woods“ (Luna Laursch & Takamovsky)

Federal Research and Training Centre for Forests,
Natural Hazards and Landscape

Austria, 1131 Wien
Seckendorff-Gudent-Weg 8
Tel.: +43 1 878 38-0
direktion@bfw.gv.at
<http://www.bfw.ac.at>



<https://www.facebook.com/BundesforschungszentrumWald>



<https://twitter.com/bfwald>



<https://www.youtube.com/user/Waldforschung>