

European Parliament's
Committee on Transport and Tourism
"Mobility package: Roads"

ROAD CHARGES

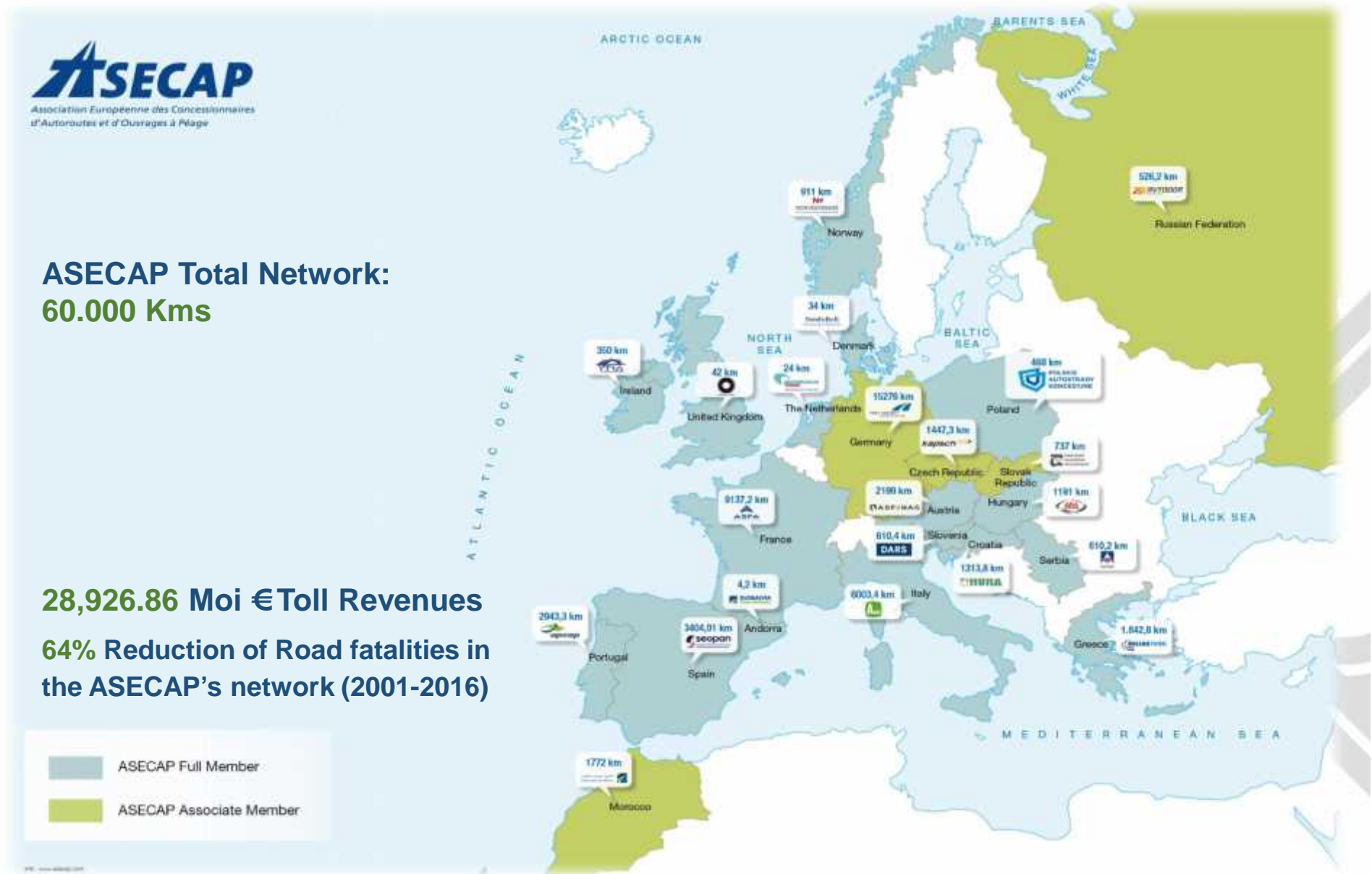


23rd of November 2017



Kallistratos DIONELIS
ASECAP General Secretary

ASECAP is the European Association of Operators of Toll Road Infrastructures, whose members' networks today span more than 60.000 kms of motorways, bridges and tunnels across 24 Countries.



DE-CARBONIZING ERA - COP 23:

Role of Efficient road transport management to reduce CO2 emissions

Principles:

- **USER** pays (Direct cost)
- **POLLUTER** pays (Externalities)

1.TOLLING/CHARGING **POLICIES:**

- **KM CHARGING:** is the instrument to apply fully the “user pays” and “polluter pays” principles in road transport management
- **TIME RELATED CHARGING:** gives to each region the option to follow its political choices in the charging regime

Open issues:

- To identify the EU road network where the km charging rules will be applied
- To allow options for states to manage the charging of the private cars in their regions
- To have a simple data base on the use of relevant revenues

2.TOLLING/CHARGING INSTRUMENTS:

ELECTRONIC ROAD TOLL SYSTEMS: A NEED TO

- Safeguard National operability (NETS)
- Develop a short-term Regional Interoperability (REETS)
- Get a European Electronic Toll System as a long term final objective (EETS)

Open issues:

- To regulate the roles of the Toll Chargers and Service Providers (Commercial conditions)
- To define a functioning “Enforcement regime”
- To support a Single European EETS Info Platform



*Association Européenne des Concessionnaires
d'Autoroutes et d'Ouvrages à Péage*

Kallistratos Dionelis
ASECAP General Secretary
www.asecap.com

Thank you