



# The Future of Food and Farming

COMAGRI 22 FEBRUARY 2018

#FutureofCAP



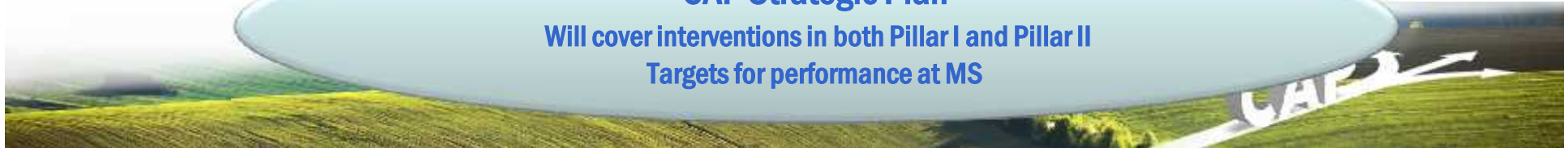
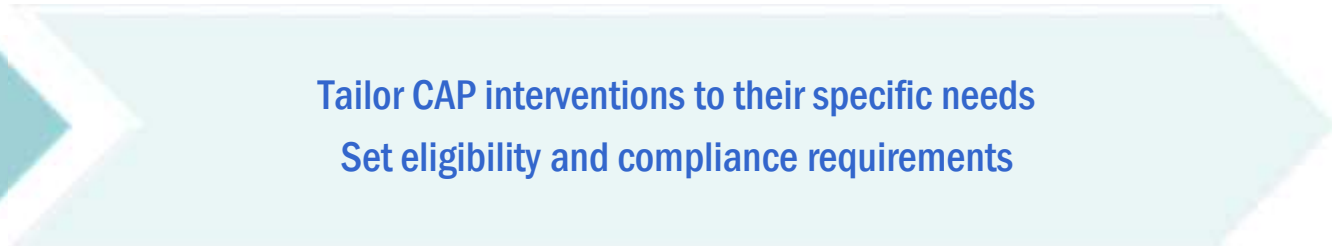
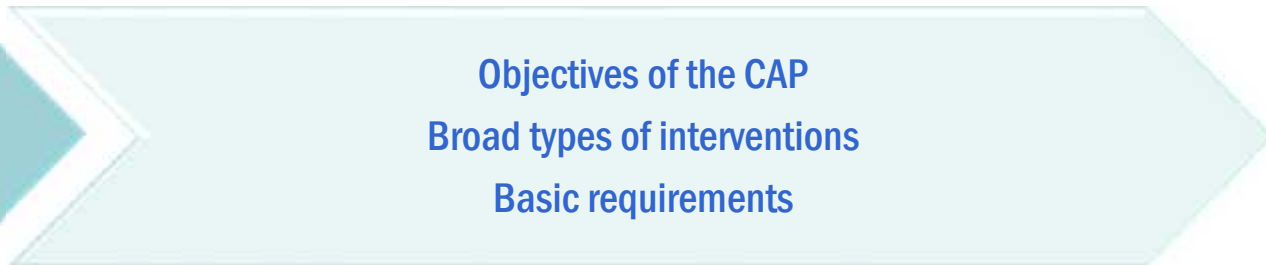


## Why a new delivery model?

- Compliance focus hinders performance orientation and is a driver of complexity
- One-size-fits-all approach not sustainable
- Complex EU legal framework to
  - take account of MS different realities
  - achieve low error rate
- High administrative burden for beneficiaries and national administrations

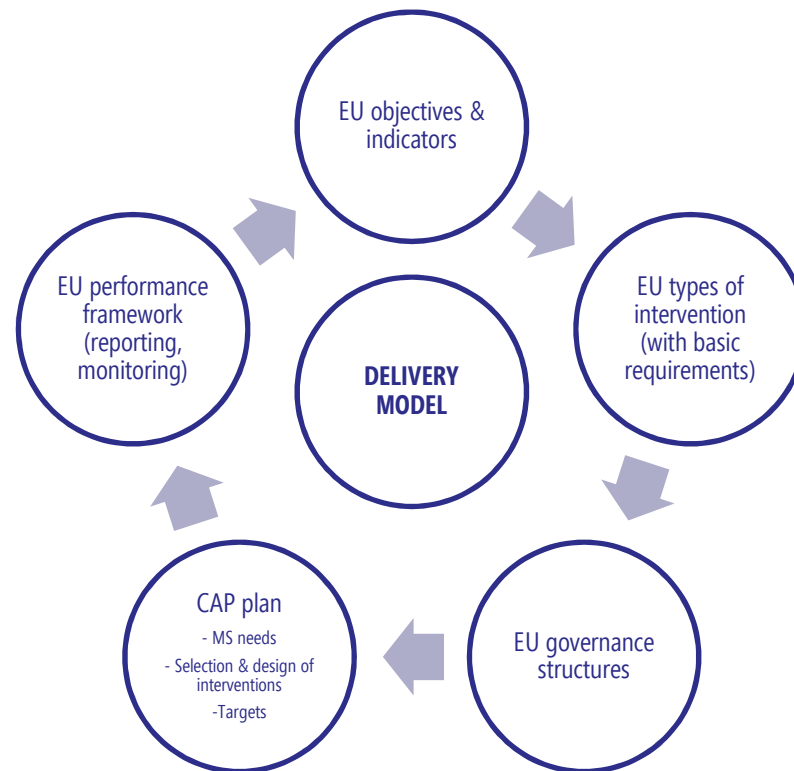


## Towards a new delivery model





## Pillars for a new delivery model





## The "C" in the CAP

- EU objectives and indicators
- EU types of interventions, with basic requirements
- EU governance structures
- CAP plan approval by COM
- EU performance framework

**Subsidiarity ≠ renationalisation**

!



CAP →



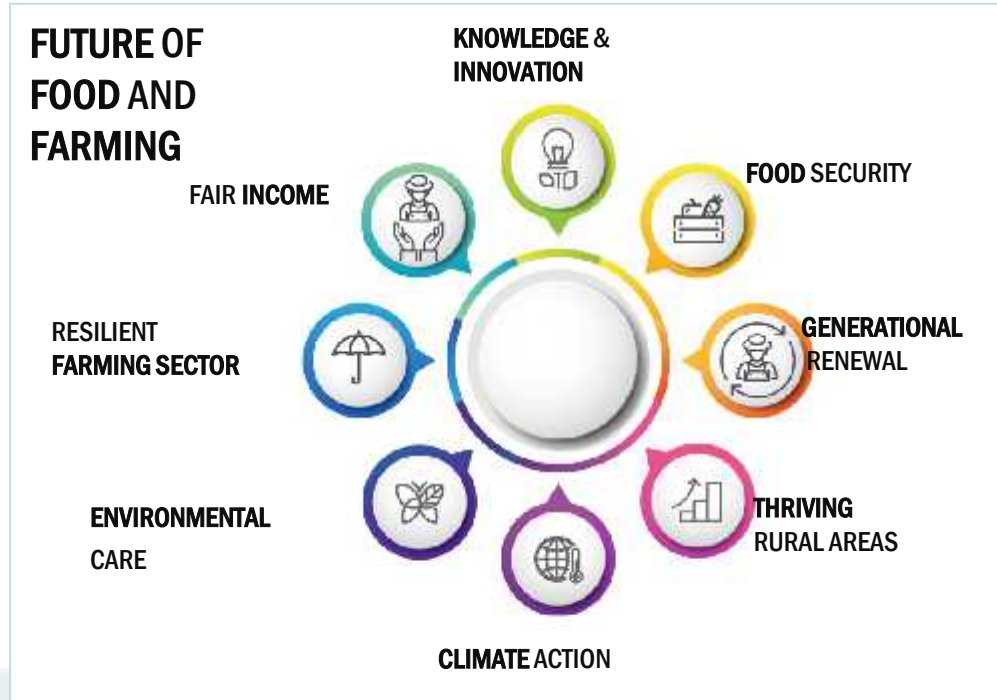
# Future CAP: Objectives and priorities for intervention

Foster a smart and resilient agricultural sector

Bolster environmental care and climate action and to contribute to the EU environmental and climate objectives

Strengthen the socio-economic fabric of rural areas

Enhance knowledge-basis  
More subsidiarity/performance  
Enhance synergies with other policies





## Performance orientation

- EU level objectives (general, specific)
- Comprehensive set of common indicators for the purpose of establishing performance requirements and reporting
- National indicators and targets set at CAP plan level
- Performance anchored at MS level, not at beneficiary level
- Appropriate ex ante conditionalities





## Governance structures – achievement of targets

- Competent authority
- Accredited paying agencies
- Measure-linked management and control systems, for example the new IACS monitoring and LPIS
- Certification bodies checking annual accounts and outputs/results
- Single audit approach - Commission only checking performance, compliance with EU basic requirements and existence of governance structures









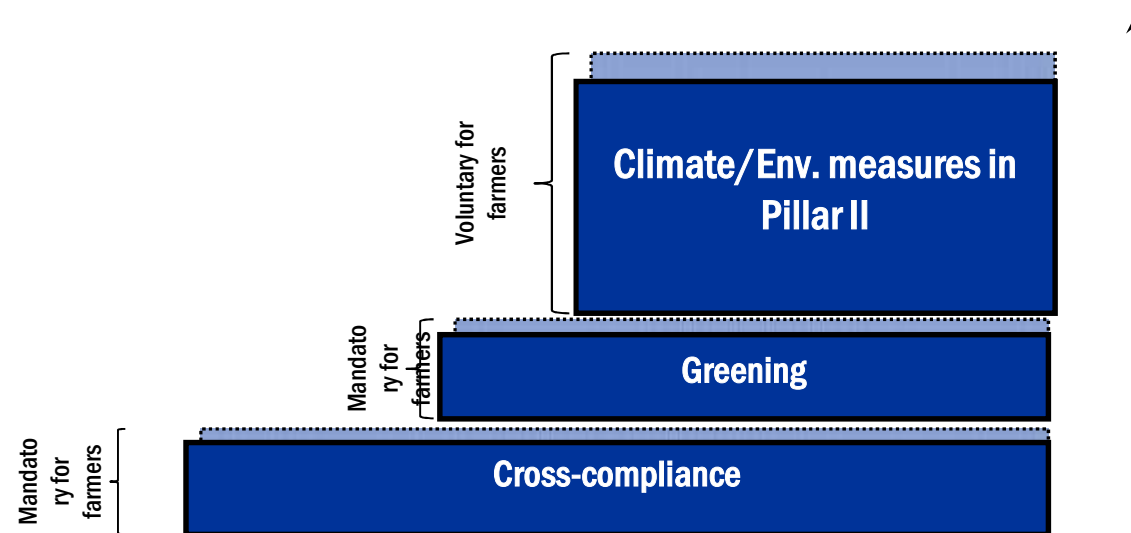
## **CAP Structured Plans will be...**

- **Simpler**
- **Shorter**
- **Less prescriptive**

**....than current RDPs**



## Current green architecture





## Key elements in the Communication

Current green architecture to be replaced

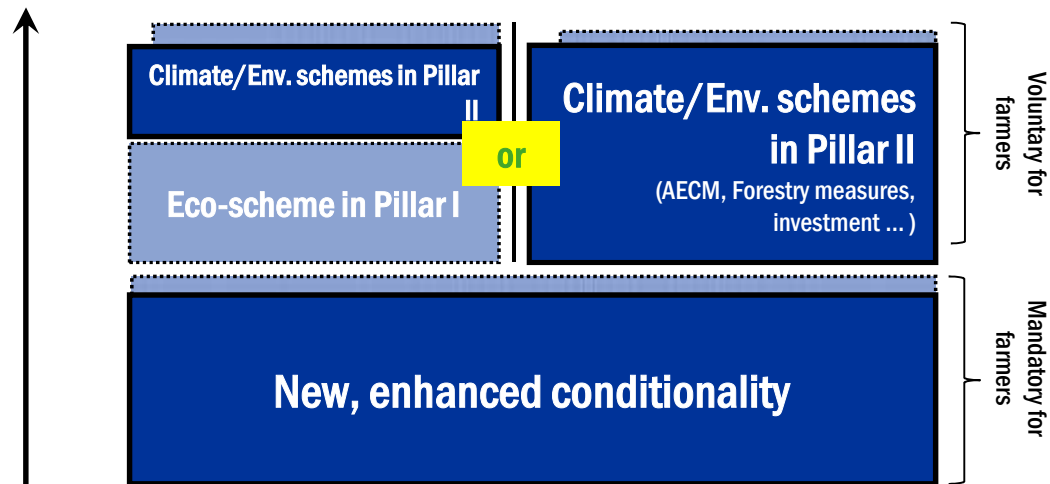
- EU level focus on WHAT is to be achieved, not HOW to do it
- Environmental and climate objectives set at EU level
- MS establish targets in CAP strategic plans
- Based on local conditions:
  - + Develop the conditionality for each standard (minimum mandatory practices)
  - + Devise appropriate mix of interventions

Potential of nutrient management plan/incentives for precision agriculture – to be explored



## Future green architecture

Increased flexibility to better take into account local conditions





## Potential conditionality

- **Streamlining** cross-compliance and greening: **conditionality**
- **Higher environmental and climate ambition** than current ambition of both cross-compliance and greening
- The **compulsory practices** under conditionality would be the **baseline** for **more ambitious voluntary practices**



## Potential conditionality

Conditionality would work with the **approach of cross-compliance**

- **Link** between CAP payments and a set of rules: **not an eligibility condition**
- **Same objectives as cross-compliance** (environment, health, animal welfare)
- **Large flexibility** left to MSs **to define on-farm rules** (GAEC rather than Greening approach)
- **More leeway** left to MSs **for management rules** than for greening





## Potential conditionality

Conditionality would be **fully integrated in the new delivery model:**

- **Articulation with other** CAP environmental and climate **instruments**
- **Link with results – quantified targets**
- **Inclusion** in the CAP Plans
- **Monitoring** of results/outputs



## New delivery model and market measures

- Use of **safety nets/ crisis measures/ exceptional measures** cannot be planned  
→ *A structured planning process is not fit for market interventions*
- Purely regulatory parts of the CMO Regulation remain outside the scope of the new delivery model





## New delivery model and market measures

Other types of market interventions fit the logic of planning, e.g. the sectorial programmes of the CMO (in particular F and V, wine, apiculture)

- **general EU objectives:** resilience of agricultural sectors concerned (fruit and vegetables, wine, ..)
- **specific objectives:** organisation of production, productivity and efficiency, innovation, sustainability (example of result indicators: share of turnover of the sector by POs)
- **CAP plan objectives and output indicators:** example - organisation of production (example of output indicator: number of producer organisations setting up an operational fund/program)





**More information at:**

[https://ec.europa.eu/agriculture/future-cap\\_en](https://ec.europa.eu/agriculture/future-cap_en)

**Thank you for your attention!**