

EUROPE REGIONAL  
NETWORK



WORLD  
GREEN  
BUILDING  
COUNCIL



# National Renovation Strategies

Creating Effective Strategies for Renovating Europe

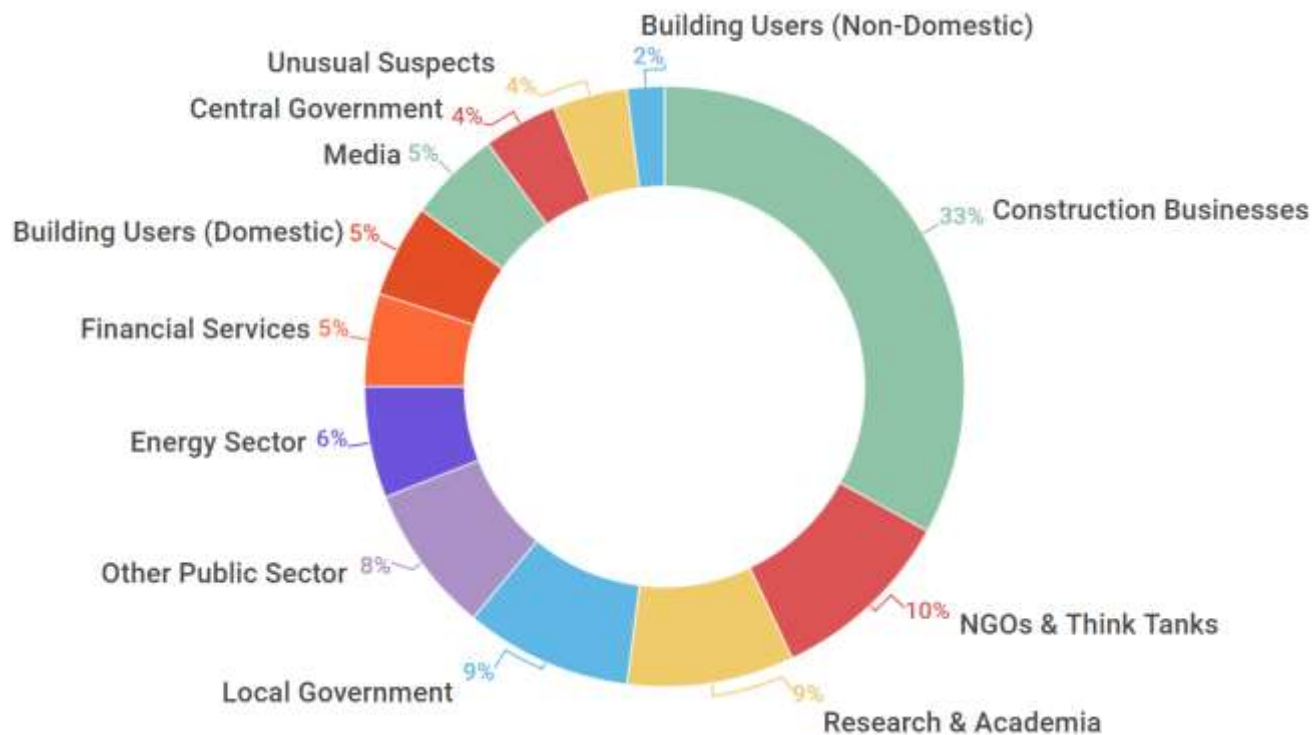
You can't throw birds in a straight line...







## “Consultation” to “Community Building”



*Breakdown of 2,000+ orgs participating in WorldGBC's Build Upon Project*

1. Intersector stakeholder platforms are needed

2. Process and quality of community building impacts solutions

3. Local – Regional – National – EU level governance structure



# #BuildUpon

## “Overviews” to “Impact Frameworks”

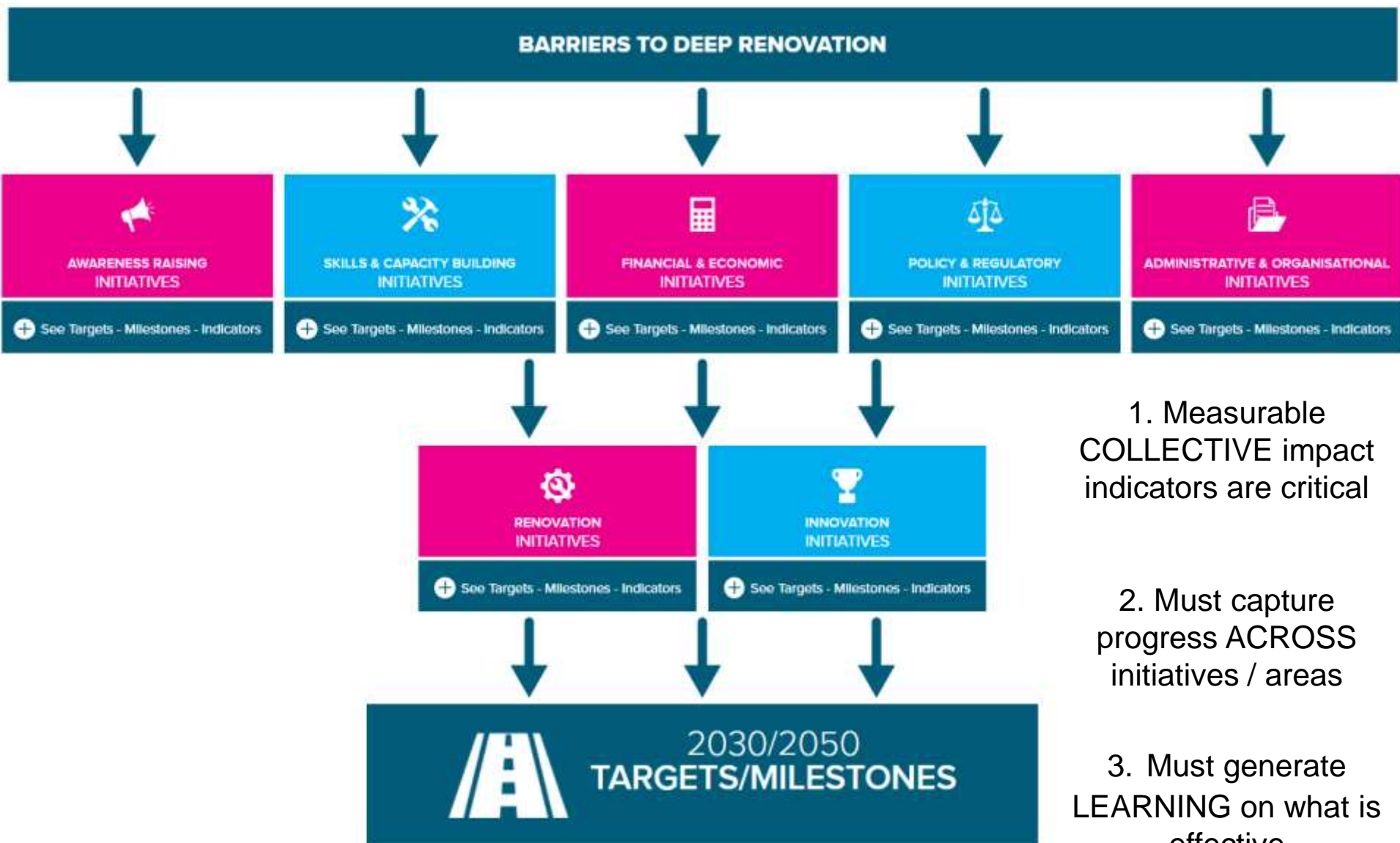
---



renowiki

- **Would you employ 100 staff that didn't report or coordinate with one another?**
- 50-100 major initiatives tackling market barriers per country
- Less than 5% reporting progress / impact
- No strategy to coordinate and scale all this resource

# Illustrative Impact Framework



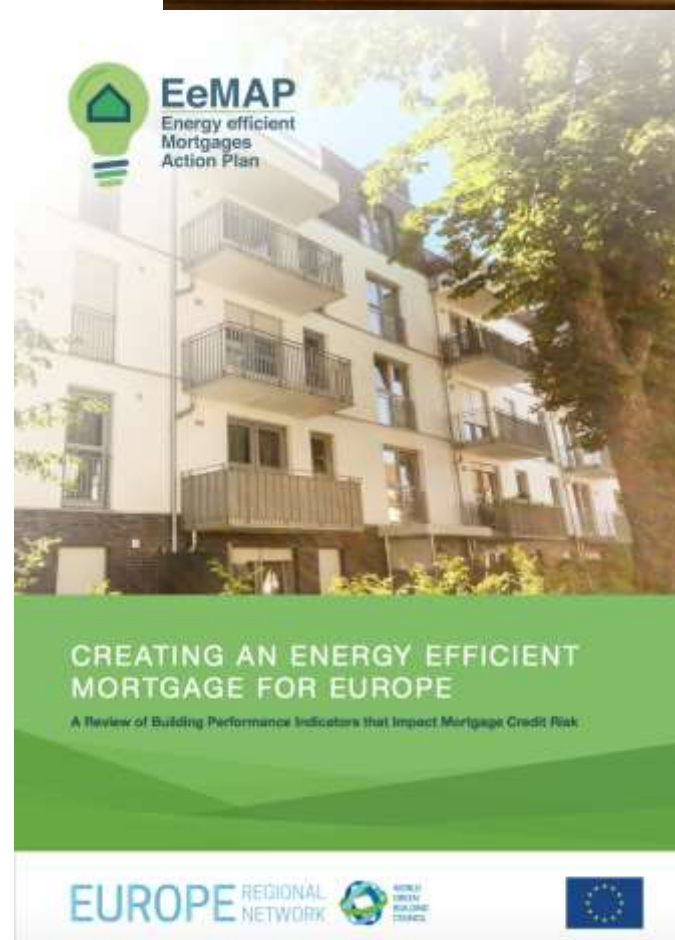




# Energy Efficiency Mortgages

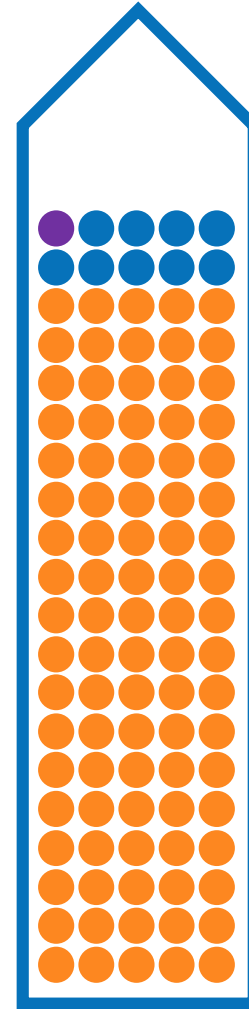
- Preparing pan-EU framework for EEMs. Public consultation until 12 March
- Building Renovation Passports will be crucial to market development
- Use of public funds to remove barriers to leverage private investment

[www.energyefficientmortgages.eu/](http://www.energyefficientmortgages.eu/)



# Creating Better Places for People

## The Rule of 90

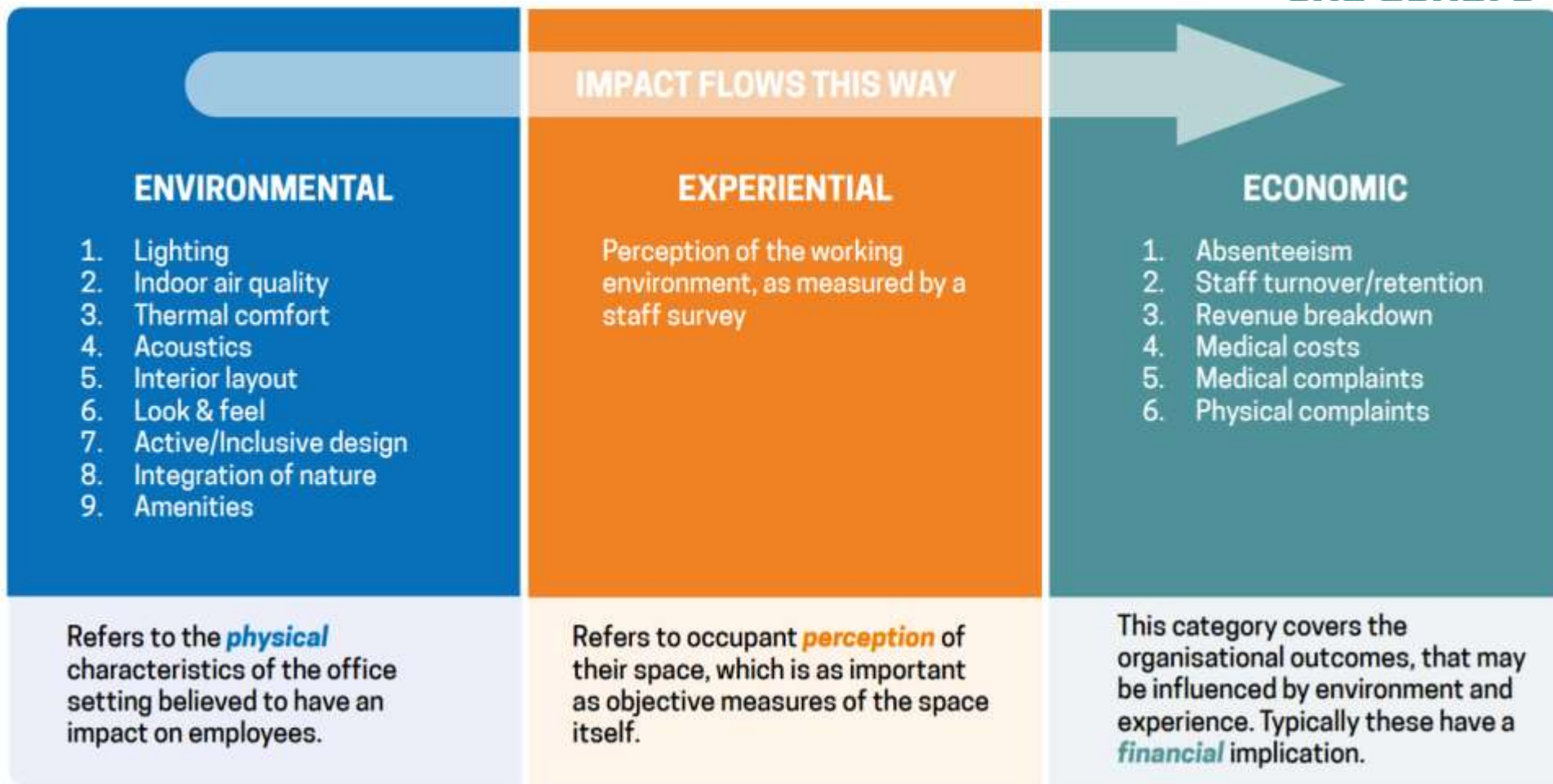


● 1%  
Energy Costs

● 9%  
Rental Costs

● 90%  
Staff costs in  
salaries and  
benefits

# Creating Better Places for People



Macro-level health and wellbeing impact analysis is important, but practical project level tools are key to creating better places for people.





[www.worldgbc.org](http://www.worldgbc.org)

[jdrinkwater@worldgbc.org](mailto:jdrinkwater@worldgbc.org)

[www.buildupon.eu/renovationrevolution](http://www.buildupon.eu/renovationrevolution)

