



EUROPEAN UNION
SATELLITE CENTRE

Analysis for decision making

SEDE meeting

« Future challenges for the EU SatCen »

A unique operational intelligence instrument to support the EU external action in CFSP/CSDP

Brussels, 10 October 2018

Pascal Legai
Director

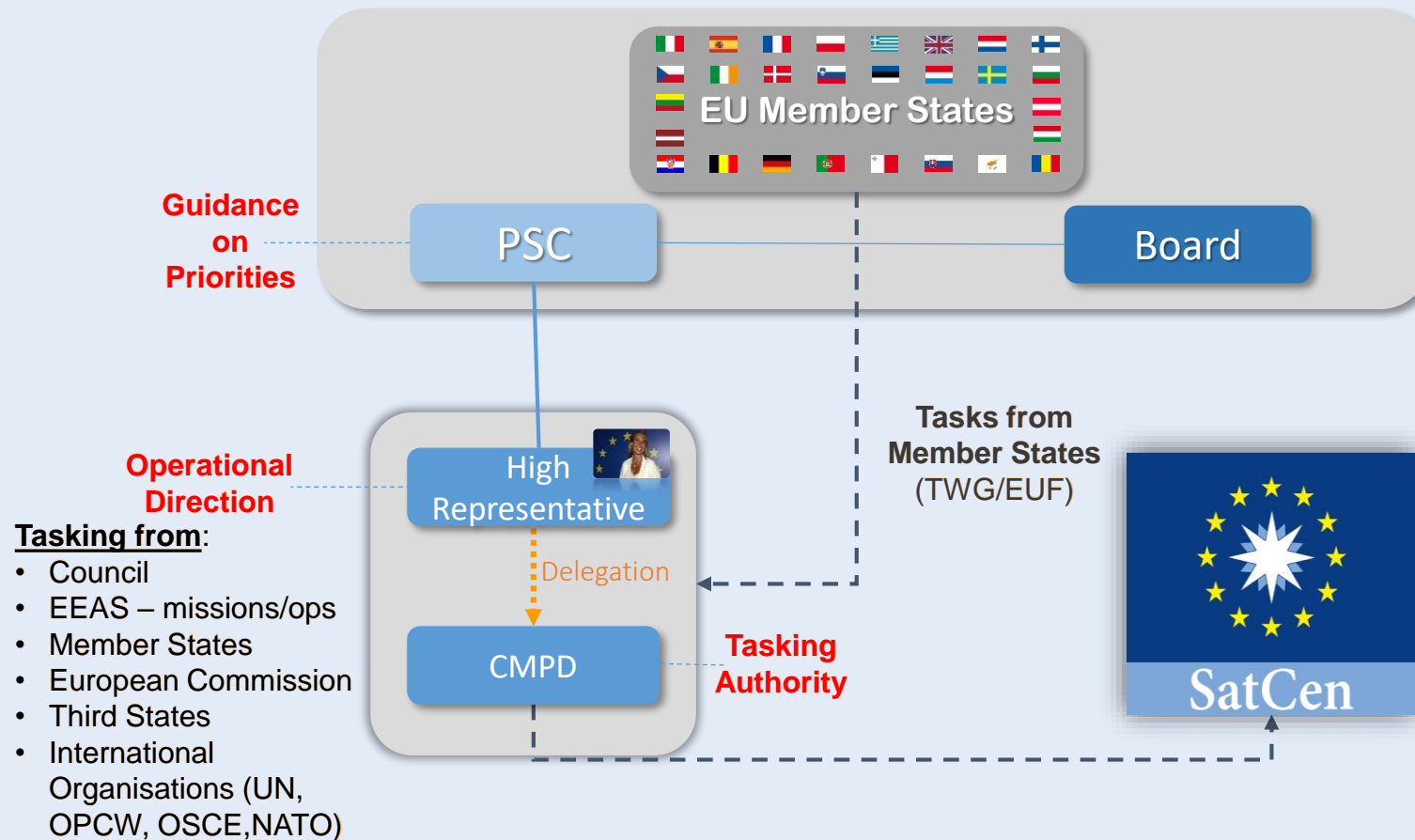
pascal.legai@satcen.europa.eu



EU SatCen mission & governance

Mission

To support the **decision making and actions** of the Union in CFSP/CSDP, inc. missions/operations by providing **products** and **services** resulting from the **exploitation of relevant space assets** and collateral data, including satellite and aerial imagery (**24/7 autonomous operational Geoint capability, secure**)



Current engagements

- ***Operations***
- ***Regional Conflicts***
- ***Piracy - smuggling***
- ***Migration***
- ***Proliferation WMD***
- ***Disasters humanitarian aid***



Implementing the EU Global Strategy

Task Evolution 2010 – 2017

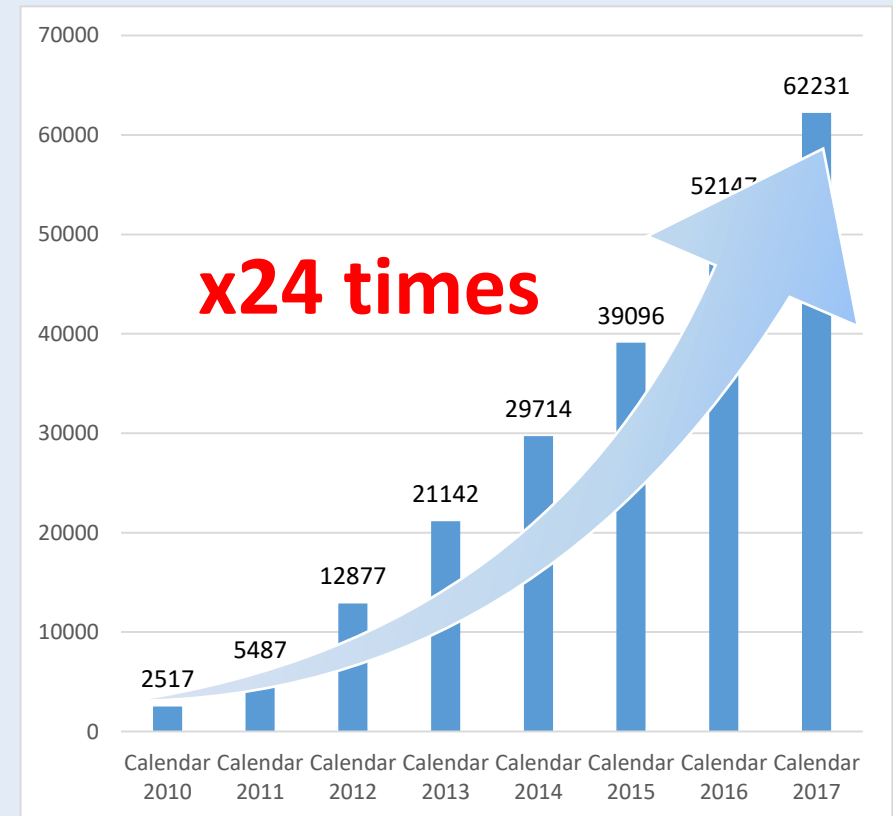
By number of Products



2013

30% of production delivered not later than 24 hours after imagery acquisition

By number of Downloads from MS



2017

75% of production delivered not later than 24 hours after imagery acquisition

Cooperation

Article 2.3 of SatCen Council Decision

- “.... **cooperate with the Commission and with Union agencies, bodies or Member States, maximising synergies and complementarity with other Union activities in particular in the area of space and security**”

Proposal for a Regulation establishing the space programme of the Union and the European Union Agency for the Space Programme

- “ .. SATCEN will be **maximising synergies and complementarities** with other Union activities especially the **Programme and its components.**”



Member States



Commission Delegated Operations

The **Copernicus services for Security applications** aim to support the related European Union Policies in the following priority areas:



Service

Border Surveillance

Maritime Surveillance

Support to EU External Action

Operator

FRONTEX

EMSA

EU SatCen (15/05/2017 -
118 tasks)



Security

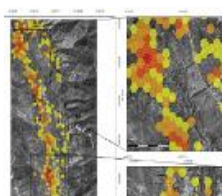
PORTFOLIO



Reference Map



Road Network Status Assessment



Conflict Damage Assessment



Critical Infrastructure Analysis



Support to Evacuation Plan



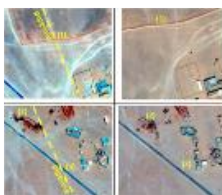
Non-EU Border Map



Camp Analysis



Crisis Situation Picture



Activity Report

NEW GEOSPATIAL PARADIGM

- **New constellations and sensors** (small, micro and nano satellites);
- **New analysis technologies** (automatic detection algorithms using Artificial Intelligence);
- Business model of commercial providers based on **subscription services** (access to data+analytics);
- **Big Data** analysis (need of performant processing platforms);
- **Wide area analysis** (detection of anomalies);
- **Integrated services** with other INT (SIGINT, HUMINT, OPSINT...);
- **Real-time** and near real-time products and services...

→ **INTERACTIVE SECURE PLATFORM (24/7 data + processing)**

Highlights

- Cooperation – Commission, Interagencies (EDA, EUISS, Frontex, EFCA, ESA)
 - Political instrument (OSCE/SMM, OPCW, IAEA)
 - **Future challenges:**
 - Fully committed Member States (13 M€/year)
 - BREXIT impact
 - MFF 2021-2027, Space Regulation → **SatCen as reference entity for CFSP-related space initiatives**
 - Technology/innovation
- CREDIBILITY of the EU external action (EU Global Strategy)**



Thank you for
your attention!