



European Leader Association
for Rural Development
Brussels, www.elard.eu

Portuguese
Presidency
2018 – 2019



LEADER Public Hearing

ELARD
Maria João Botelho



EUROPEAN PARLIAMENT

2018.11.22



ELARD – Member networks in 25 countries



Austria >	Bulgaria >	Croatia >
Czech Republic >	Denmark >	Estonia >
Finland >	France >	Germany >
Greece >	Hungary >	Ireland >
Italy >	Latvia >	Lithuania >
Macedonia >	Netherlands >	Poland >
Portugal >	Romania >	Serbia >
Slovakia >	Slovenia >	Spain >
Sweden >		

International non-profit organization founded in 1999

Member networks in 25 countries representing more than 2500 LAGs

- To improve the quality of life in rural areas and to maintain their population through sustainable, integrated local development
- To spread the philosophy, principles and scope of the LEADER method grounded in the seven specific features



www.elard.eu

Main numbers of LEADER

27 years implemented in European Union countries, some practices also outside EU;

> 2500 LAGs (Local Action Group) cover 80% of European territory;

30% of total European population (200 million) influenced by LAGs activities;

More than 1 million activities/projects implemented through local development strategies;

More than 40 billion € invested through local development strategies (public + private funding).



LEADER crucial issues

Mainstreaming LEADER into RDPs (2007- 2013)

Design and implementation of multifund CLLC, stimulated by LEADER (2014 -2020)

In most of the MS LEADER starts late and later than other RDP measures

Need for adequate tools to evaluate / measure results and impacts of a territorial, integrated and multisectoral intervention.



Commission proposals for > 2020

- ☹ EAFRD is no longer part of the Common Provisions Regulation → life will be harder to LAGs working under multifund
- ☹ Coordination and synergies will be more difficult at local level
- 😊 Selection of LAGs one year after approval of RDPs
- 😊 Rules of the main Fund under CLLD can be applied to all involved Funds
- 😊 Support to stronger CAP and Cohesion Policy under a reinforced MFF by the European Parliament.



Challenges for future LEADER/CLLD

The complexity of the problems identified by rural communities requires a **broad perspective of rural development**;

Which calls for **several areas of government** and different resources;

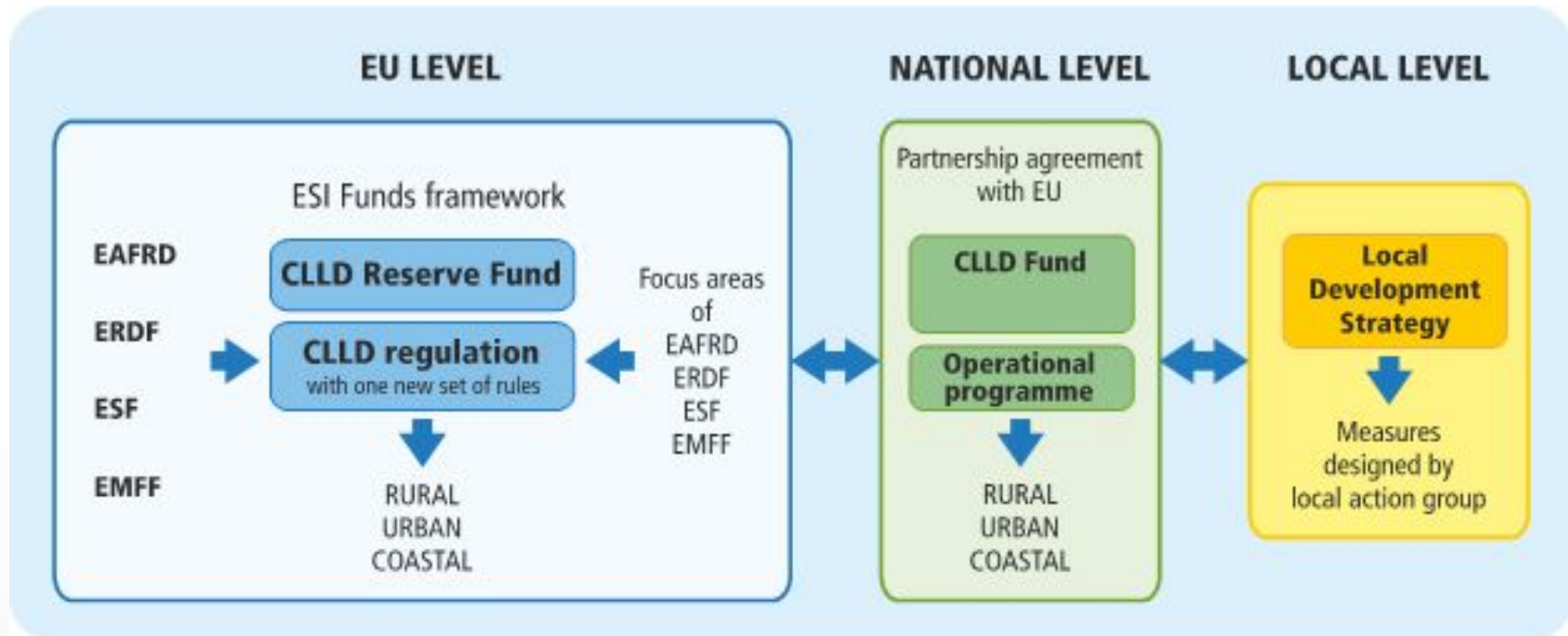
Multi-funded CLLD needs **stronger coordination** between the different Funds managing authorities;

Administrative burden and budgetary constraints undermine the capacity for **territorial animation**;

LAGs are partners in implementation of rural development policies. **Rebuilding mutual trust** is essential to the renewal of LEADER.



ELARD proposal for LEADER/CLLD



To increase from 5% to 10% the minimum proportion of EAFRD allocated to LEADER, with 80% EU co-finance for all LEADER expenditure;

Member States should use this % of the EAFRD in a way that respects a meaningful implementation of LEADER



European Leader Association
for Rural Development
Brussels, www.elard.eu

Portuguese
Presidency
2018 – 2019



THANK YOU FOR YOUR ATTENTION!



www.elard.eu

<https://www.facebook.com/ELARDaisbl/>

