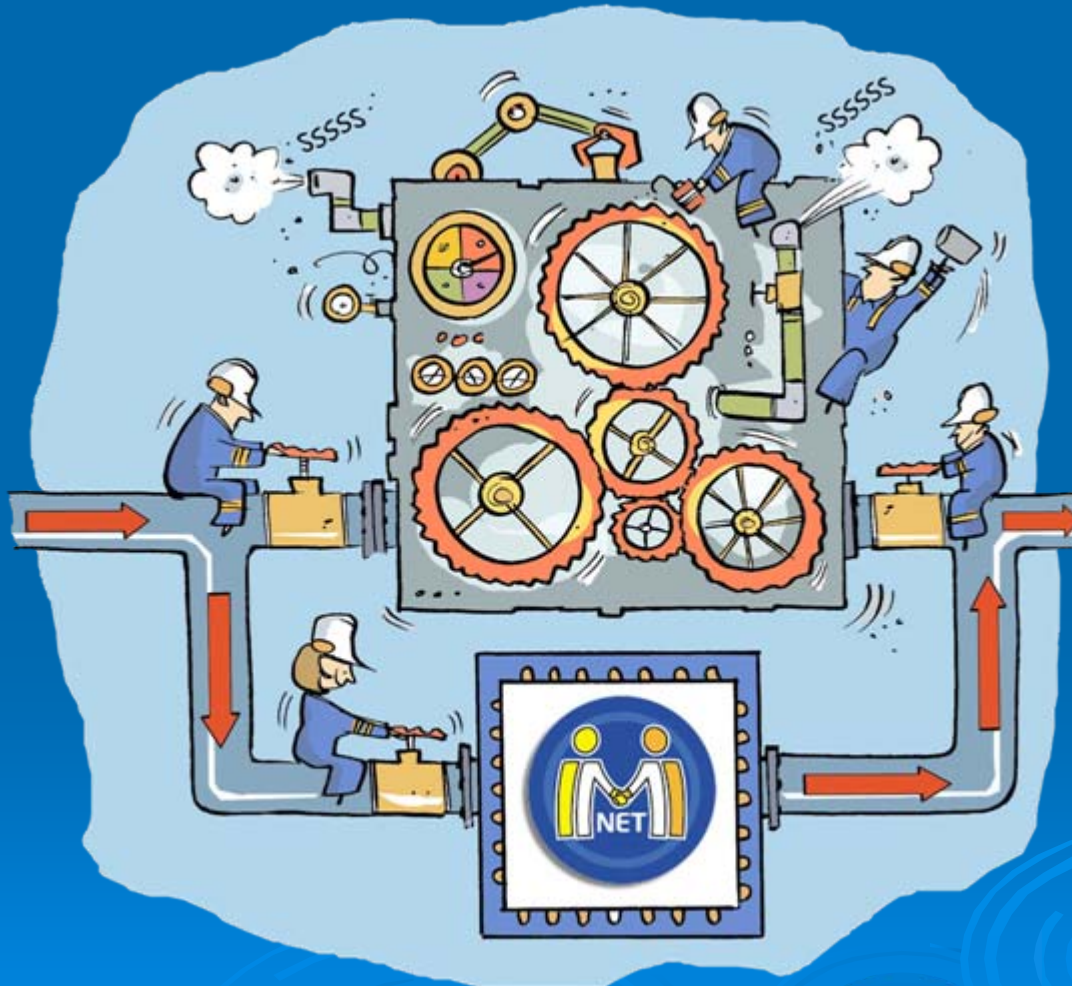


The Internal Market Information System (IMI)

Better communication – better service



ec.europa.eu/imi-net



What is IMI

A webbased application for

- National authorities at all levels
- To find the right counterpart in another Member State
- For secure exchange of information
- In all EU languages





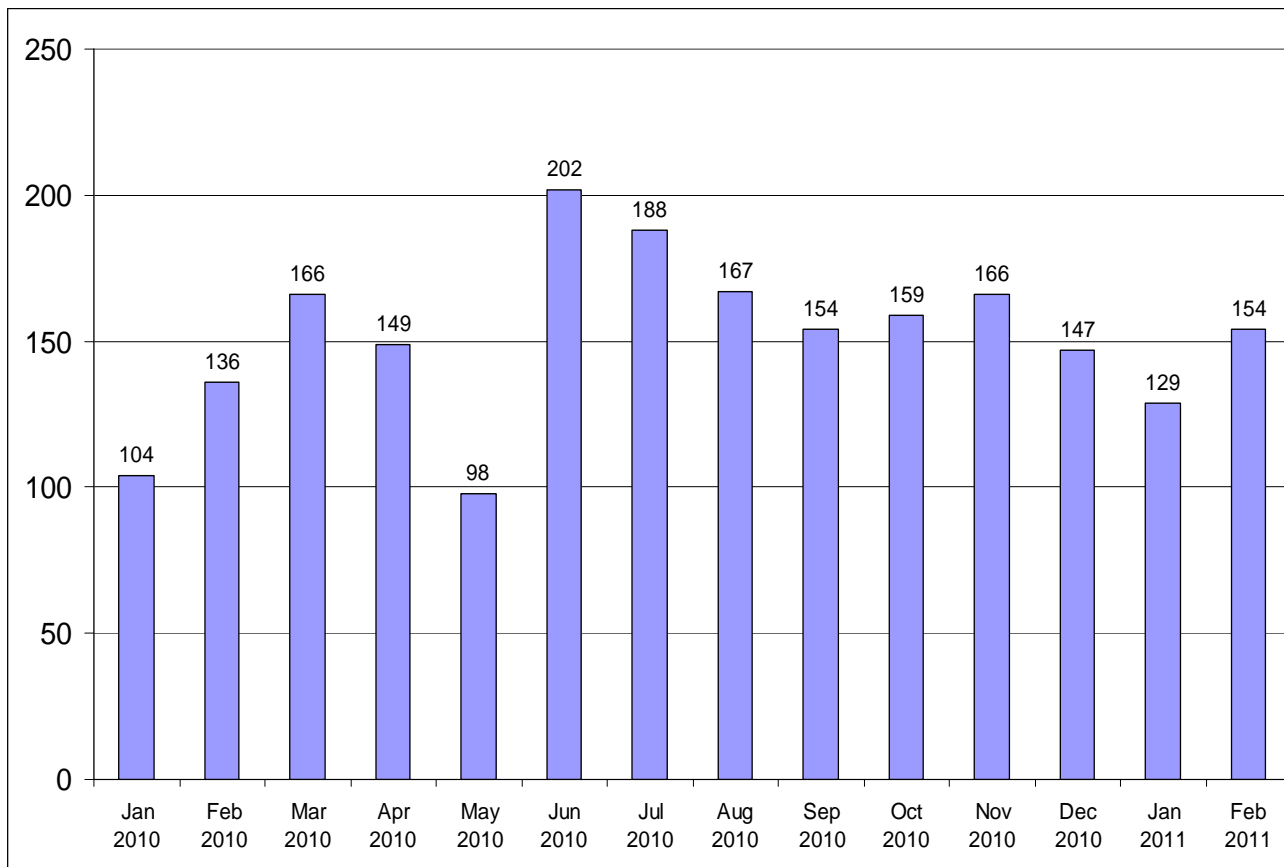
Facts & figures

- Today used for professional qualifications and services
- 6100 authorities registered
- more than 11.500 users
- 160 requests for information per month
- 58% answered within two weeks
- 92% of users find IMI user friendly



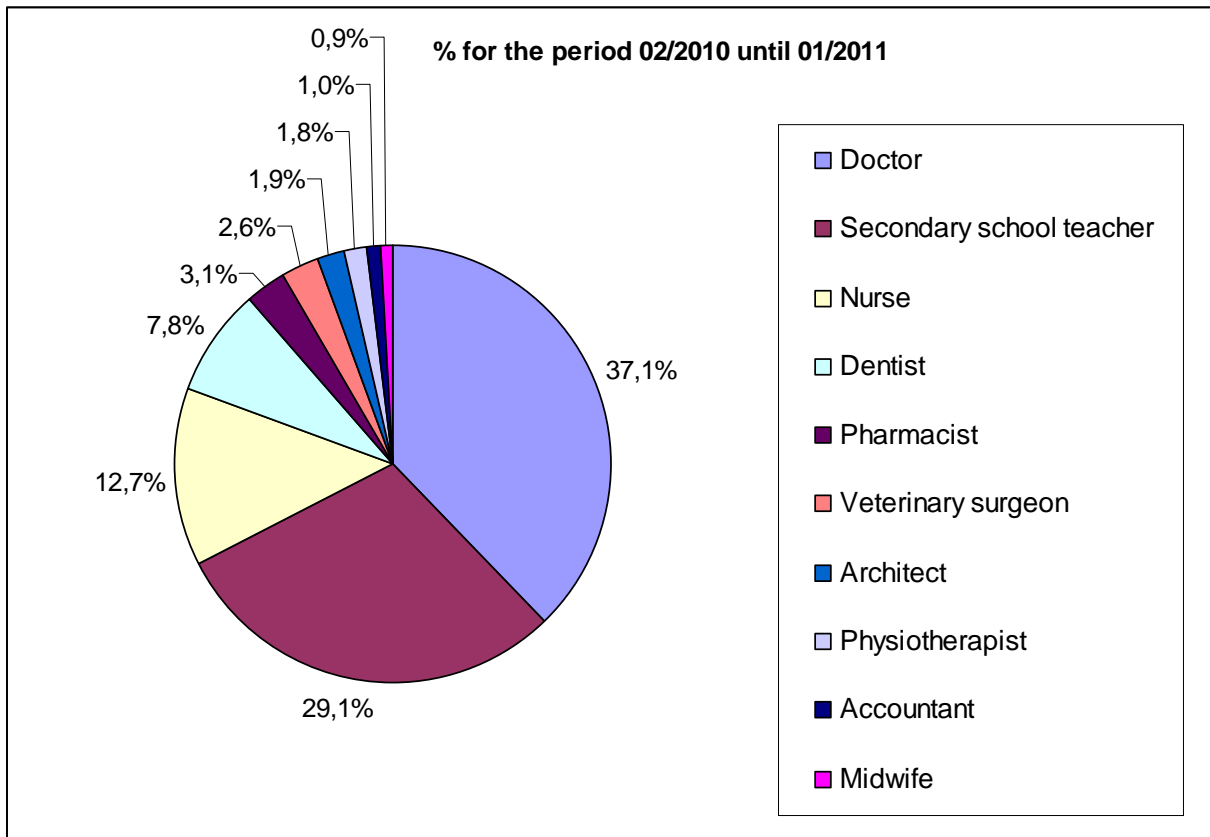


Requests for professional qualifications: How many ?





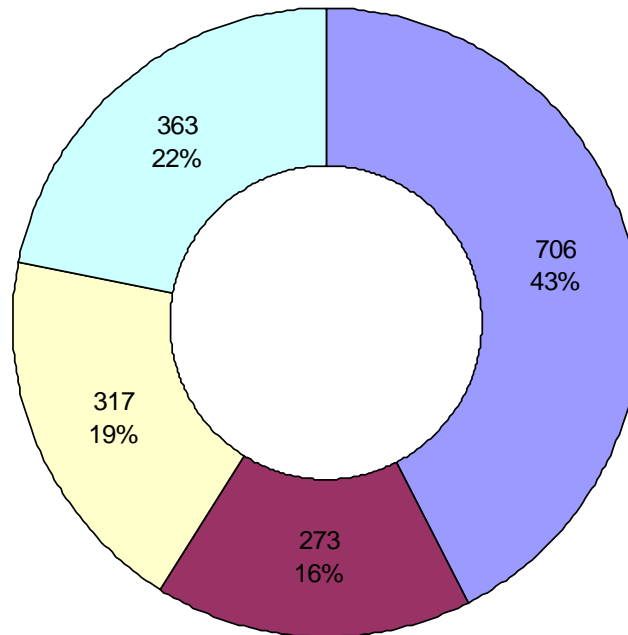
Requests for professional qualifications : Which professions ?





Requests for professional qualifications : How fast ?

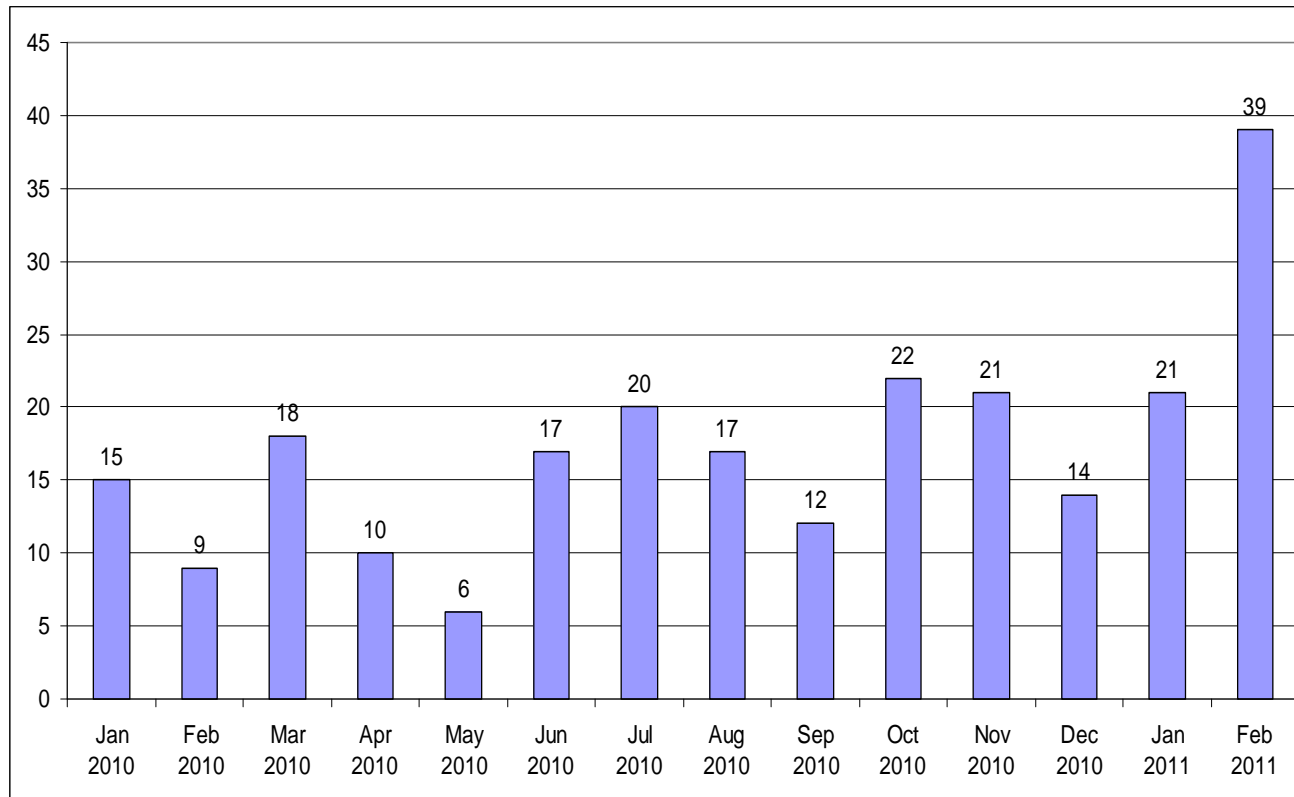
Period from 03/2010 until 02/2011



■ within 1 week ■ within 2 weeks ■ within 4 weeks ■ more than 4 weeks



Requests for services : How many ?





Expansion and development of IMI

Commission
Communication
of 21 February 2011 :

- New policy areas
- More functionality
- Links with existing systems





Benefits of reusing IMI

- Cheaper to develop
- Faster delivery
- Multiple tasks via single tool
- Shared helpdesk, training and promotion efforts
- Wider networking benefits





How does IMI help citizens and businesses ?

- Faster replies from authorities
- Decreases need to translate documents
- Less refusals of applications due to lack of information





Nexts steps

- **Training and awareness raising - 2011-onwards**
- **Study on IT architecture in view of expansion –2011**
- **Timetable for expansion – early 2012**
- **Development of new functionality – 2011-2012**
- **Proposal for an IMI regulation - June 2011**



Further information

- ec.europa.eu/imi-net
- 2010 Annual report
- Commission Communication on expanding and developing IMI
- Information session for MEPs & assistants on how IMI works in May/June