



DUTCH INSTITUTE FOR
TECHNOLOGY
SAFETY & SECURITY

Peter J.H.G. van den Ende MPA

Program owner Operational Field lab Dutch Institute for Technology, Safety & Security

Program owner “Sensing” Dutch Police

Director CrimiNee! Netherlands

Commissioner of Police

Chairman National Assembly Regional Platforms for Crime Control





DUTCH INSTITUTE FOR
TECHNOLOGY
SAFETY & SECURITY

Dutch Institute for Technology, Safety & Security is powered by:

Brainport Development / Midpoint Brabant
Tilburg University / Technical University Eindhoven
Municipality Eindhoven and Tilburg
Brabants Development Organisation / Province of Brabant
Various industrial partners form the region en abroad
Regional Platform Crime control / CrimiNee!



Public private partnership cooperation between:

- **Police / Government / Ministries / Public Prosecution.**
- **Science / Universities.**
- **Business partners.**
- **Industry associations.**



DUTCH INSTITUTE FOR
TECHNOLOGY
SAFETY & SECURITY

Public private partnership which developed different public private programs:

- Safe Industrial / Business Parks.
- Safe Inner Cities.
- Secure public parking 'Secure Lane'
- Secure private parking.
- ***Sensing ANPR program***
- Net centric work by means of an Common Operational Picture





L.J. van de Laar

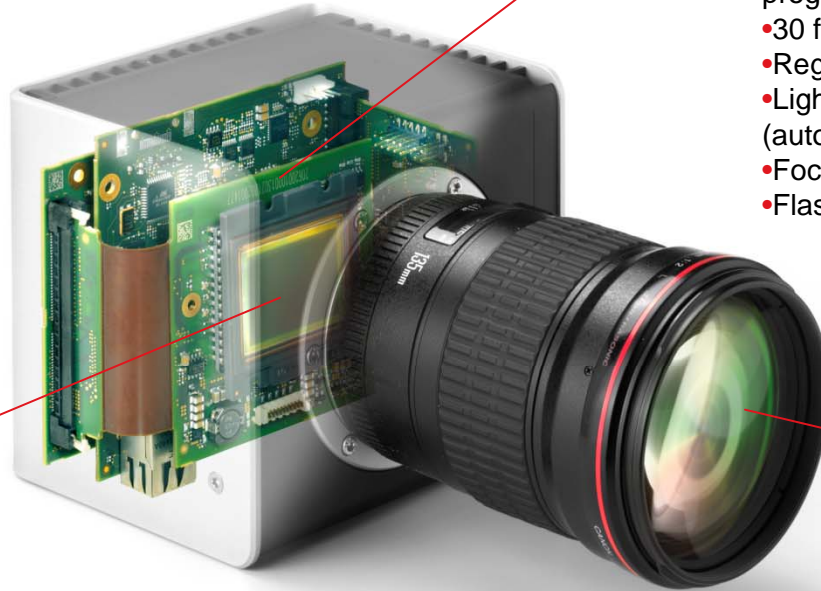
Business Developer PRODRIVE / AMPLEYE

Partner in the Field lab “Sensing” Dutch Institute for Technology, Safety & Security



Nox-20

H.264
JPEG2000
ONVIF



multi view architecture

25 cameras in one, each programmable on:

- 30 fps / motion detection
- Region of interest (view)
- Light control (exposure settings) (automatic/manual)
- Focus
- Flash control (incl. IR)

ultra high resolution

- 20 MP at 30 fps
- Live and retrospect PTZ
- WDR / HDR
- JPEG2000 and H.264

revolutionary low light performance

- Special sensor
- 35mm full frame sensor
- Very low pixel noise
- EF (SLR-style bayonet) mount



High speed moving object

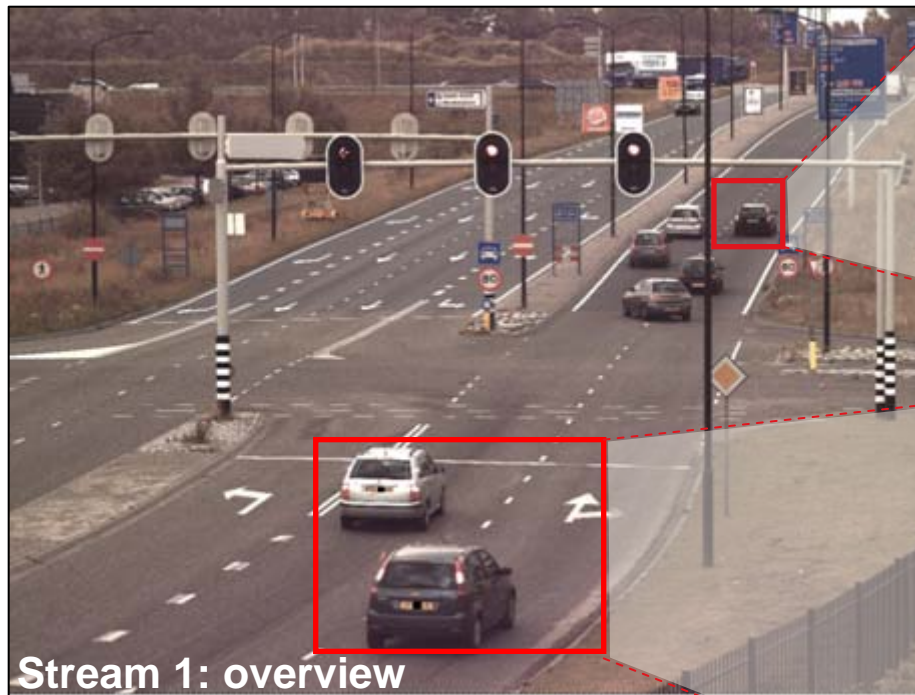
Conventional cameras:
Rolling shutter



Ampleye | Nox-20:
Global shutter



Multi View Architecture



... up to 25.

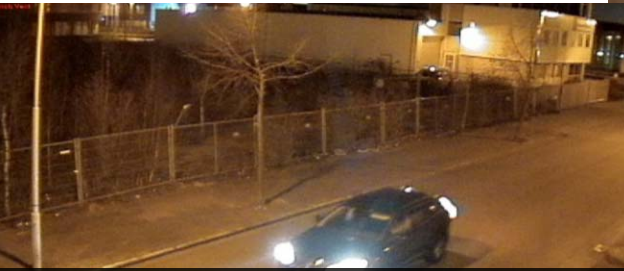
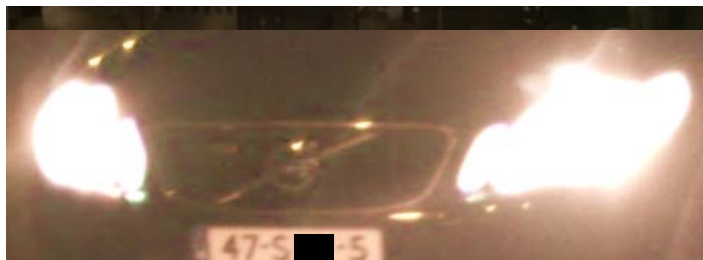




- ➊ Overview
- +
- ➋ Multiple s

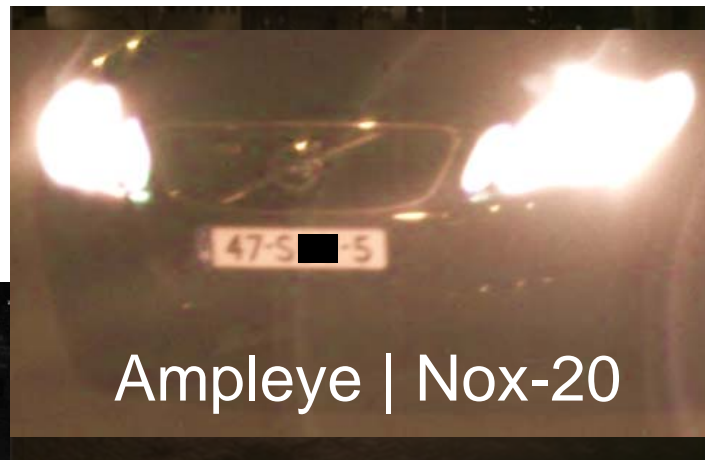
See the difference at night



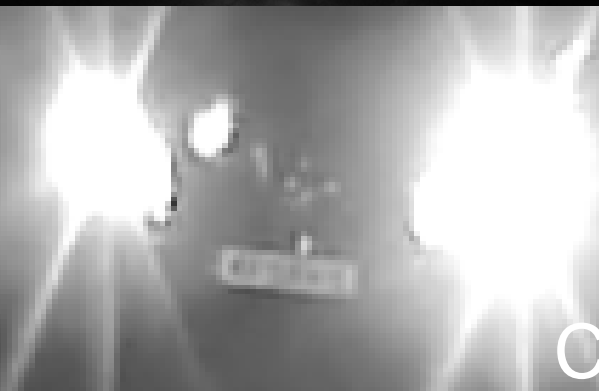
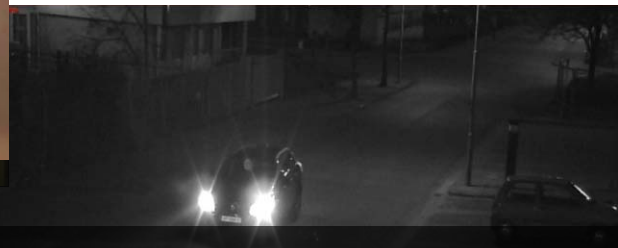
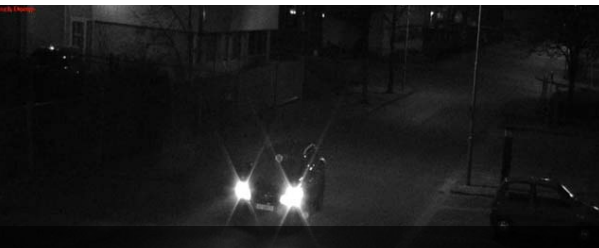


Common fixed cameras





Ampleye | Nox-20



Common dome cameras



Thank you for your attention!