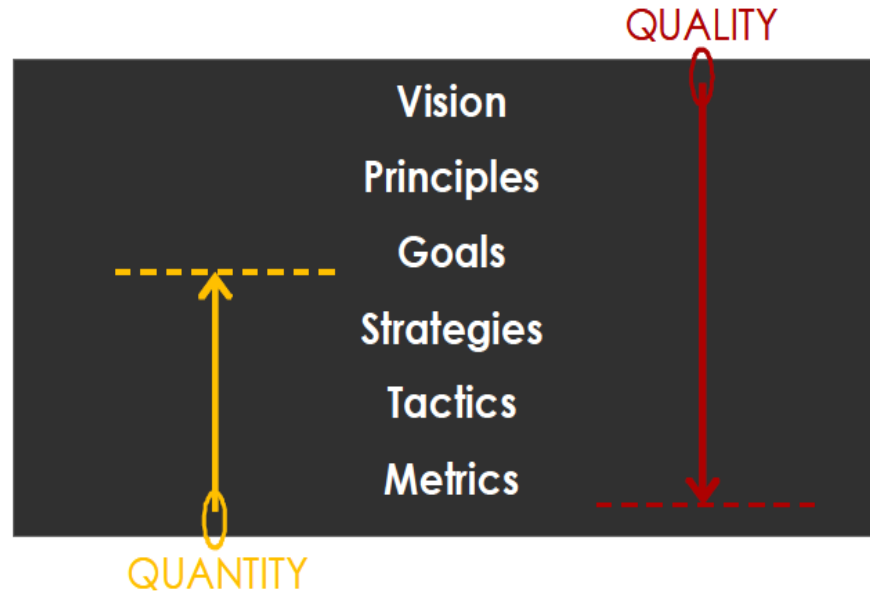


BIGH

# Regenerative & Positive Impact Circular Economy Food Production

## What is at stake?

The food industry is challenged by an accelerating demand for healthy, local and traceable food led by an increasingly conscious consumers demand.



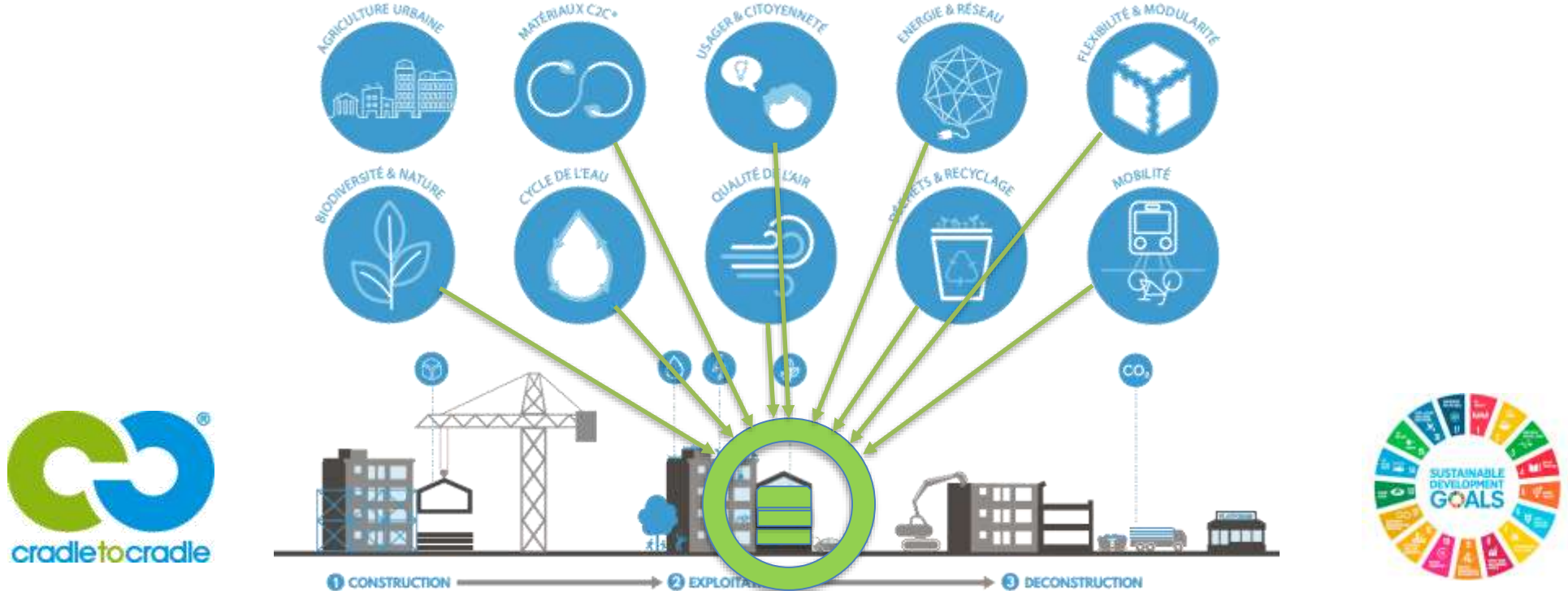
## BIGH's vision

BIGH supplies fresh, healthy food grown within an aquaponics system, integrated to urban and suburban points of sales and transformation, according to C2C.

## And...

Produce phosphate, nitrate, biomass, renewable electricity, capture heat loss, save water, reduce urban heat island effects, create jobs, training and sensibilizing.

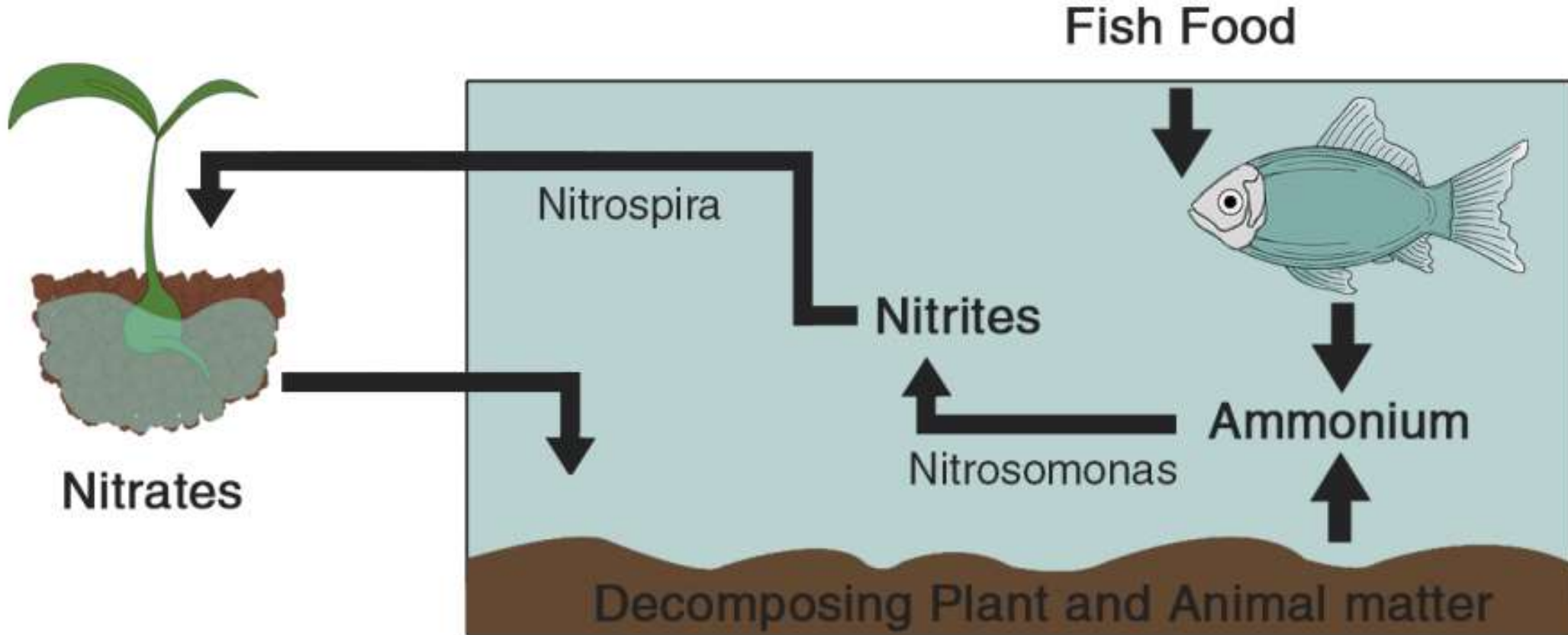
# Regenerative & Positive Impact Circular Economy Food Production

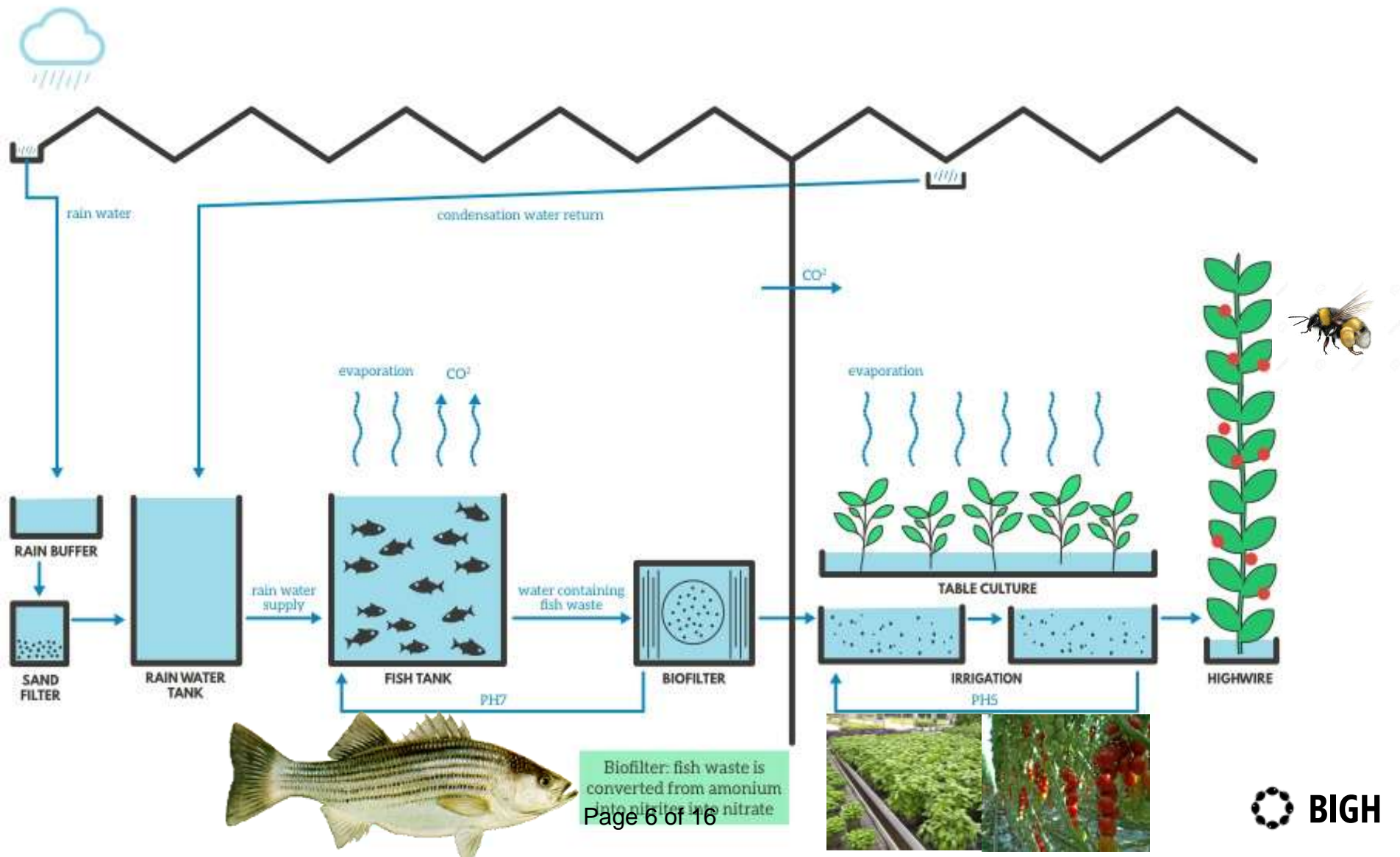






## AQUACULTURE & HYDROPONICS > AQUAPONICS

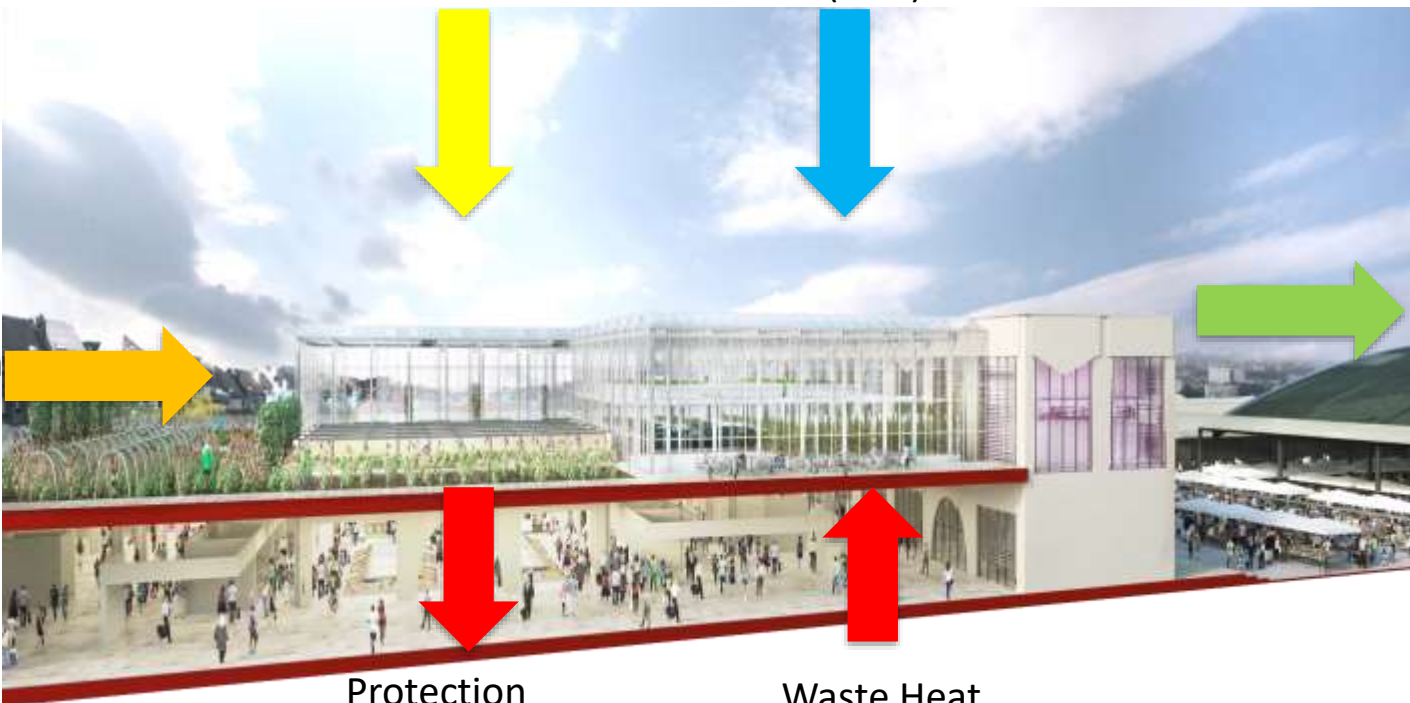








Social Economy  
Short distribution  
Customers  
Microclimate  
Biogas  
Labor



Light  
Heat  
Photovoltaic

Rainwater  
Stormwater  
AIR (CO2)

Healthy Food  
Flowers  
Pharmaceuticals  
Humus/Biomass  
Treated water  
Natural fertilizers  
Biodiversity  
Mixed development  
Jobs  
Pride  
Sensibilisation

Protection  
Cooling  
Purified air  
Env Performance  
Image & attractivity  
Rent & ROI

Waste Heat  
CO2  
Well Water  
Access  
Sales/ Shops









> 80 varieties tested



15 Tons



170.000





No pesticides ( use beneficials & pollinizers)

No chemical fertilizers ( use fish water & natural nutrients only)

Quality renewable energy (Heat loss recovery & PV production)

Capture CO2 to produce Food (30 kgCO2/Year/m2 of GH)



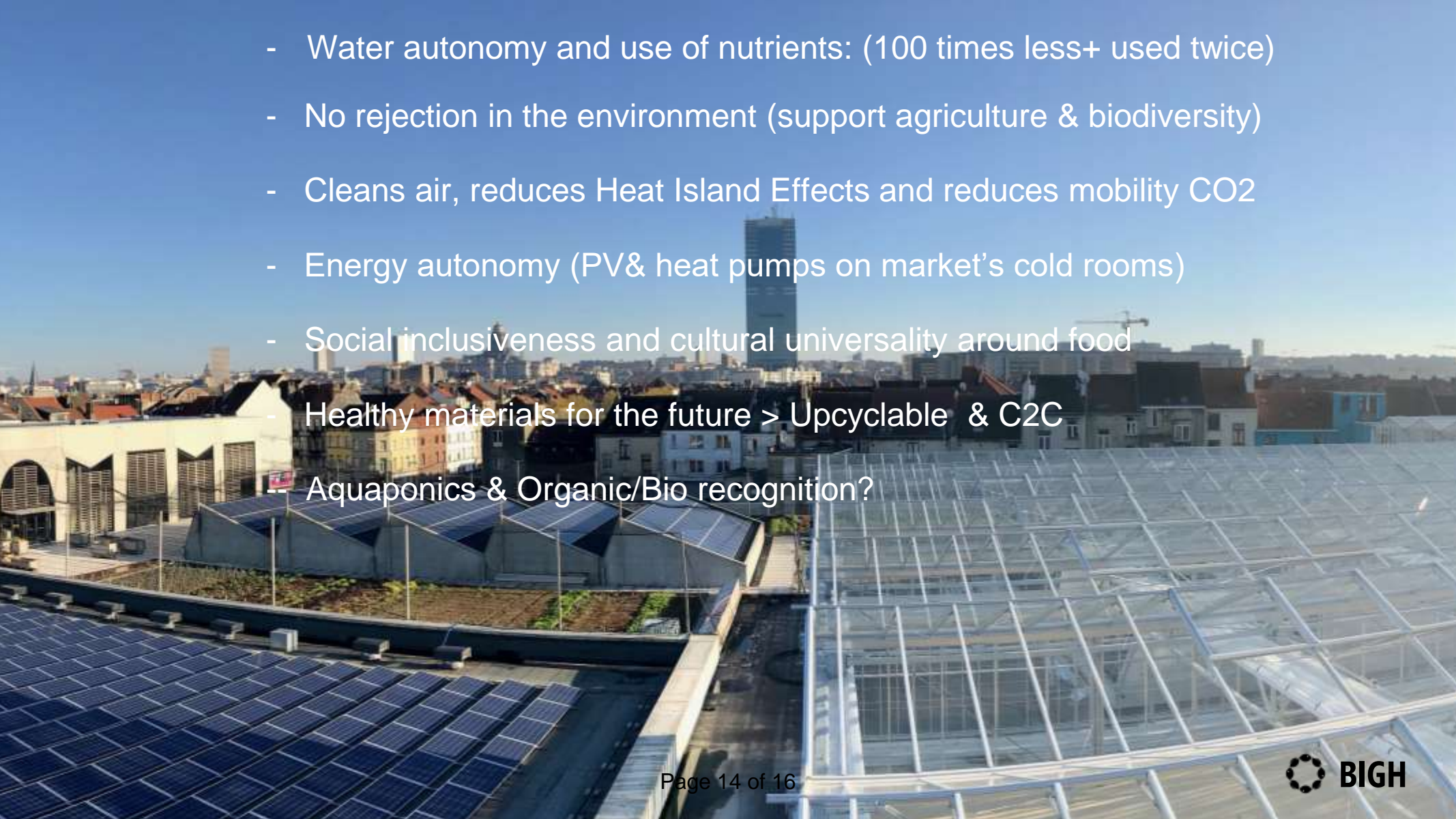


**25-30.000 Kg/year**

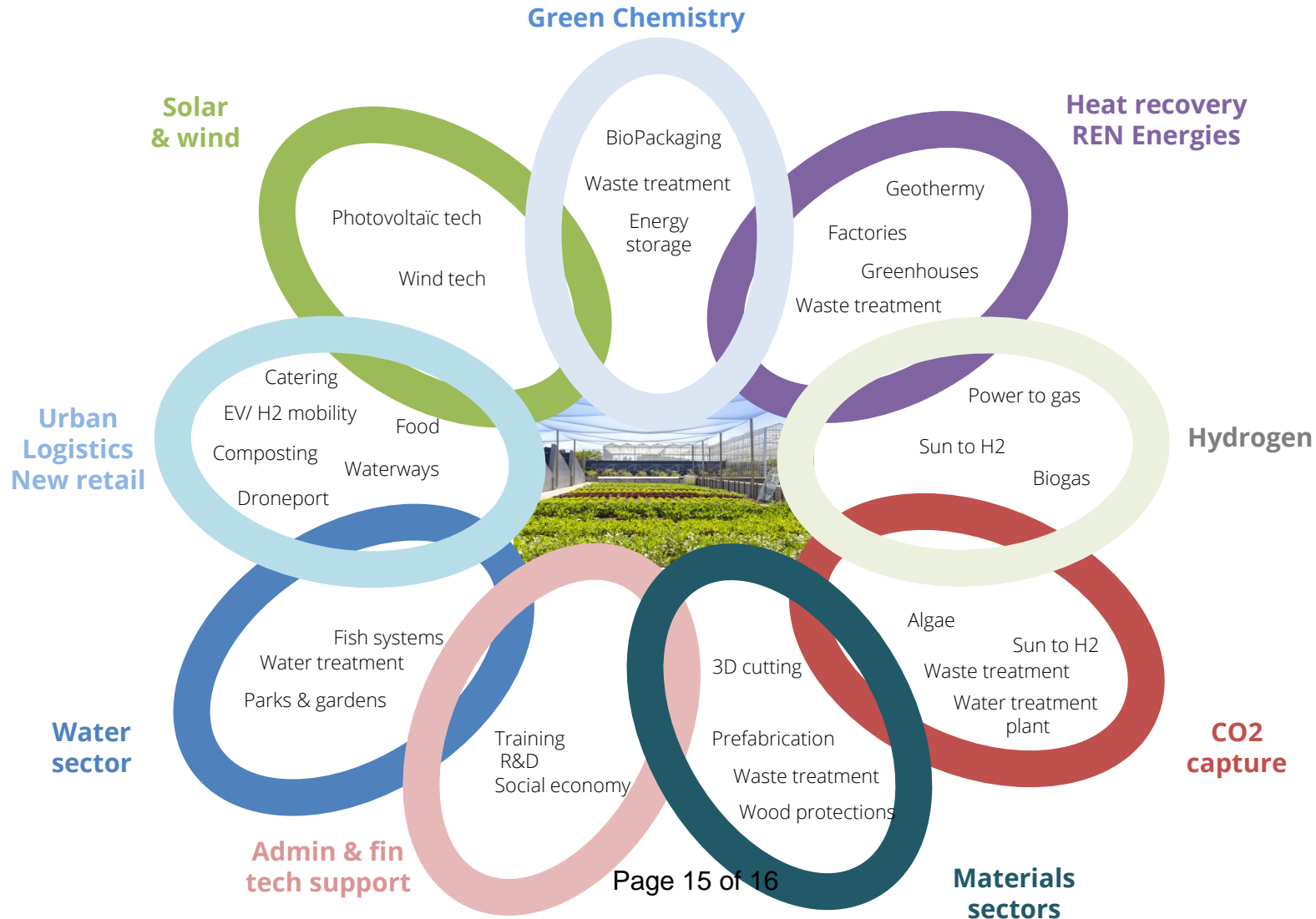




- Fish feed aim for 70% veg. fibers & 30% Insect protein
- Fish density adequate with structural limits of Bio-filter capacity
- No antibiotics (would kill bio-filter's microorganisms)
- Water filtered biologically twice per hour
- Utilizes 7% of water/day to de-nitrify and irrigate plants

- 
- An aerial photograph of a city rooftop. The foreground is dominated by a large array of dark blue solar panels. To the right, a large, rectangular greenhouse structure with a metal frame and translucent panels is visible. In the background, a dense urban landscape with various buildings and a tall, modern skyscraper is visible under a clear blue sky.
- Water autonomy and use of nutrients: (100 times less+ used twice)
  - No rejection in the environment (support agriculture & biodiversity)
  - Cleans air, reduces Heat Island Effects and reduces mobility CO2
  - Energy autonomy (PV& heat pumps on market's cold rooms)
  - Social inclusiveness and cultural universality around food
  - Healthy materials for the future > Upcyclable & C2C
  - Aquaponics & Organic/Bio recognition?

# Federates other initiatives and shared circular economy loops (Examples)







[www.bigh.farm](http://www.bigh.farm)  
[sb@bigh.tech](mailto:sb@bigh.tech)

Steven Beckers

