

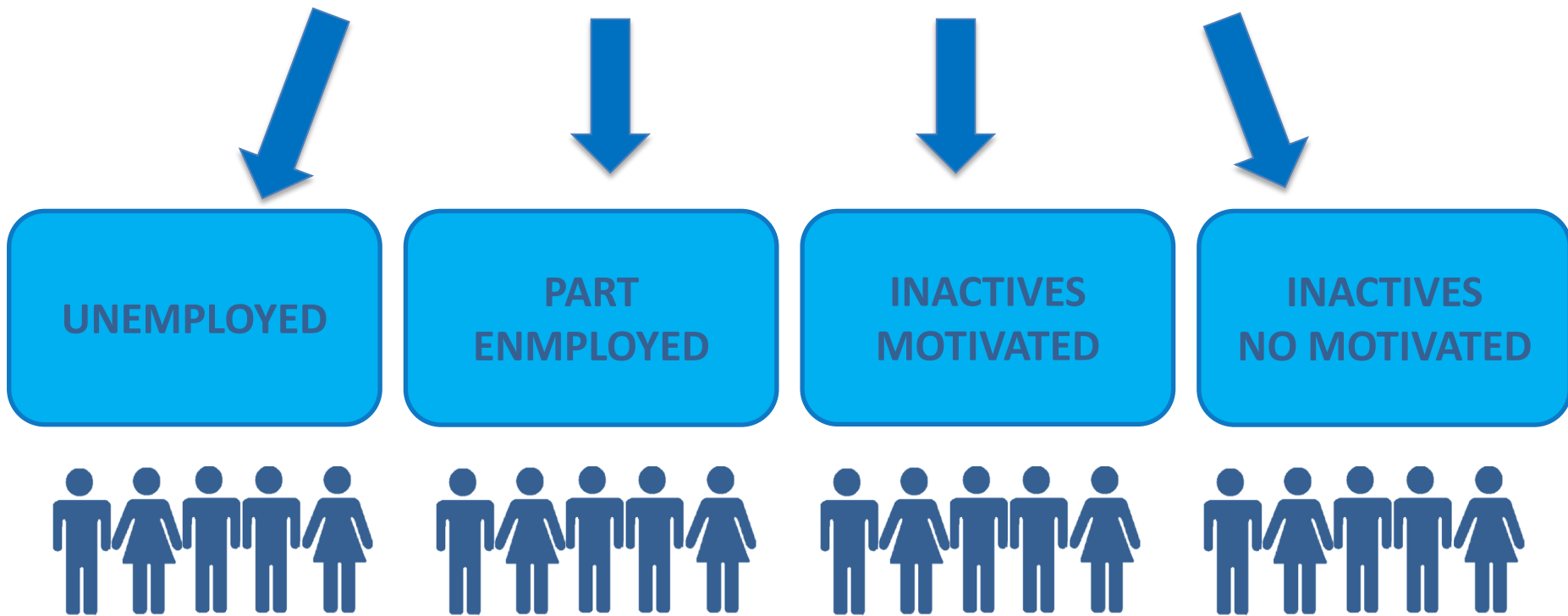
The labor market promoting the social inclusion – Polish experience

Prof. dr hab. Jacek Męcina Warsaw University



LEWIATAN

How to use an untapped potential of Polish labor market?



Unused potential of labor resources (the percentage of professionally actives)

State	Unemployed			Part employed			Professionally inactives, jobseekers, but not ready to take a job			Professionally inactives, no jobseekers, but ready to take a job		
	altogether	k	m	altogether	k	m	altogether	k	m	altogether	k	m
Germany	6,0	6,3	5,7	4,7	7,3	2,4	1,2	1,4	1,1	1,4	1,8	1,1
Denmark	7,7	7,9	7,6	3,1	4,1	2,3	0,9	1,0	0,8	2,6	2,6	2,5
Greece	17,9	15,2	21, 6	3,2	4,1	2,6	0,4	0,6	0,3	1,3	2,3	0,6
Poland	9,8	9,1	10,5	1,8	2,4	1,3	0,6	0,8	0,5	3,6	4,4	3,0
Hungary	11,0	11,0	11,0	1,6	2,0	1,3	0,3	0,3	0,2	5,1	5,4	4,8
United Kingdom	8,2	8,8	7,4	5,6	7,8	3,7	1,0	1,2	0,8	2,4	2,8	2,2
Czech Republic	6,8	5,9	8,0	0,5	0,9	0,2	0,3	0,5	0,2	1,1	1,3	0,8

Source: Eurostat [2012]

Changes in public employment services

CUSTOMER ADVISOR
**INDICATORS OF THE PRO-
EFFECTIVE ACTIONS**
**PROFILING THE
UNEMPLOYED**

PARTNERSHIP
PUBLIC – PUBLIC
PUBLIC – SOCIAL
PUBLIC – PRIVATE

**NEW SUPPORT
INSTRUMENTS**
(> 30, 50+, women)
RENEWABLE INSTRUMENTS

NATIONAL TRAINING FUND
LIFELONG LEARNING

What we want to achieve?

IMPROVE SERVICE EMPLOYERS AND INCREASE NUMBER OF JOB OFFERS

EASIER ENTERING TO THE LABOUR MARKET FOR YOUTH (>30)

JOB ACTIVATION OF PROFESSIONAL INACTIVES AND PEOPLE OVER THE AGE OF 50

IMPROVE QUALITY OF SERVICE FOR THE UNEMPLOYED AND ADDRESSING SERVICES AND INSTRUMENTS AND INVEST IN RESOURCES OF PUBLIC EMPLOYMENT SERVICE

INCREASE THE EFFICIENCY OF PUBLIC EMPLOYMENT SERVICE AND DEVELOP COOPERATION WITH LABOR MARKET INSTITUTIONS (NGOs AND PRIVATE SECTOR)

INVEST IN LIFELONG LEARNING

The impact of new instruments on employment

employment
rate
min 71 %

New instruments to promote employment of young people on the labor market (BON OF INTERNSHIPS AND TRAININGS, FOR POPULATION AND EMPLOYMENT)

Implementation of loan under the programme "FIRST BUSINESS - SUPPORT FOR START"

Durable labor market integration of young people, through the implementation of *Youth Guarantee*

DEVELOPMENT OF SOCIAL ENTREPRENEURSHIP, ACTIVATION & INTEGRATION PROGRAMME, OUTSOURCING ACTIVATION SERVICES TO AGENCIES

NATIONAL TRAINING FUND as an effective instrument for investing in the skills of employees

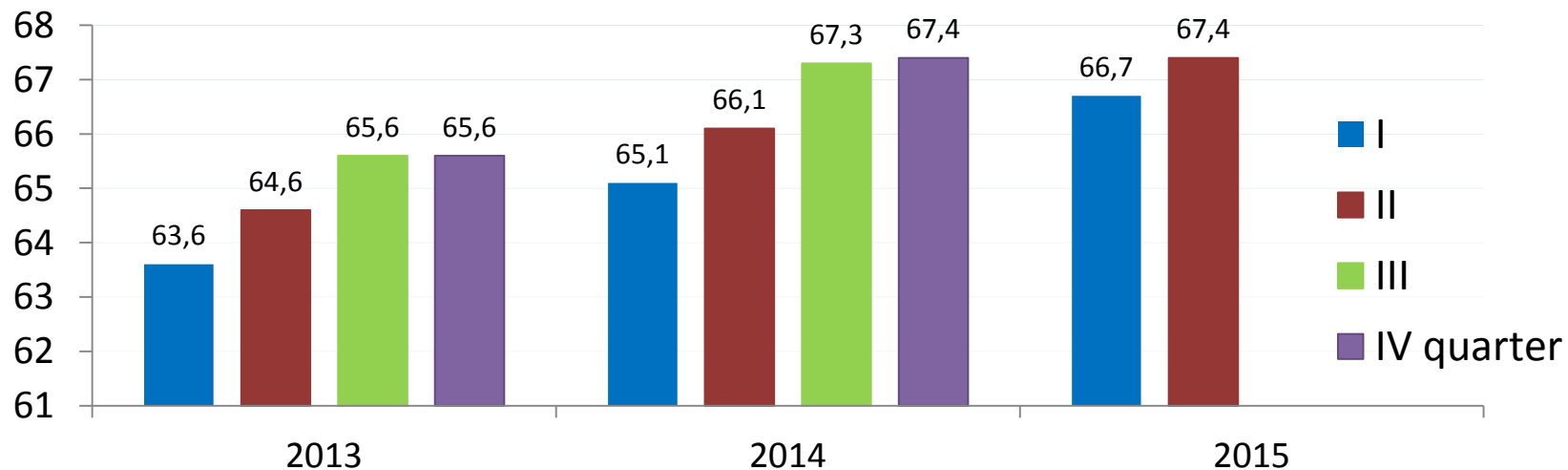
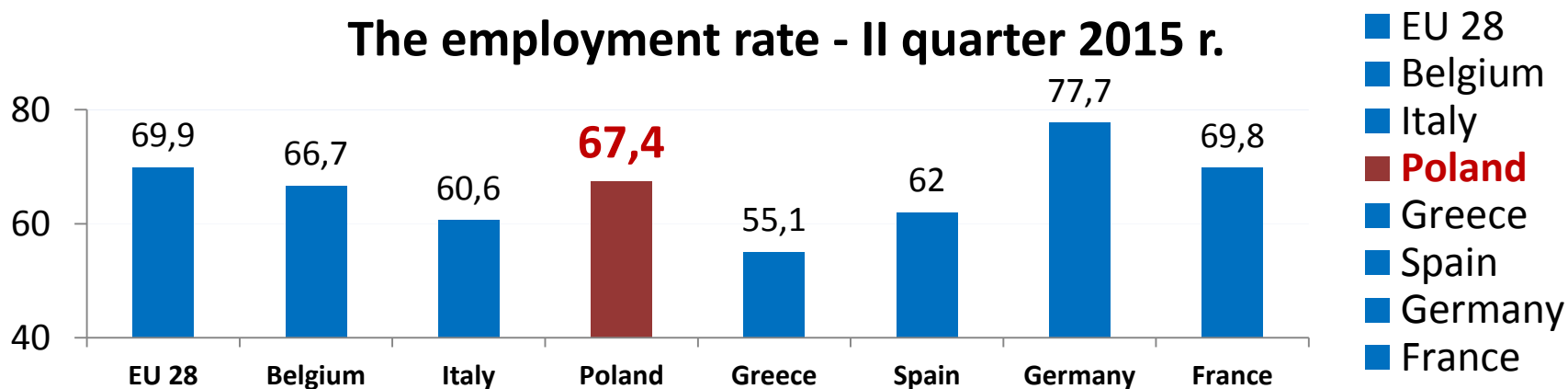
The level of employment rate in Poland

Strategy Europe 2020 – where are we?

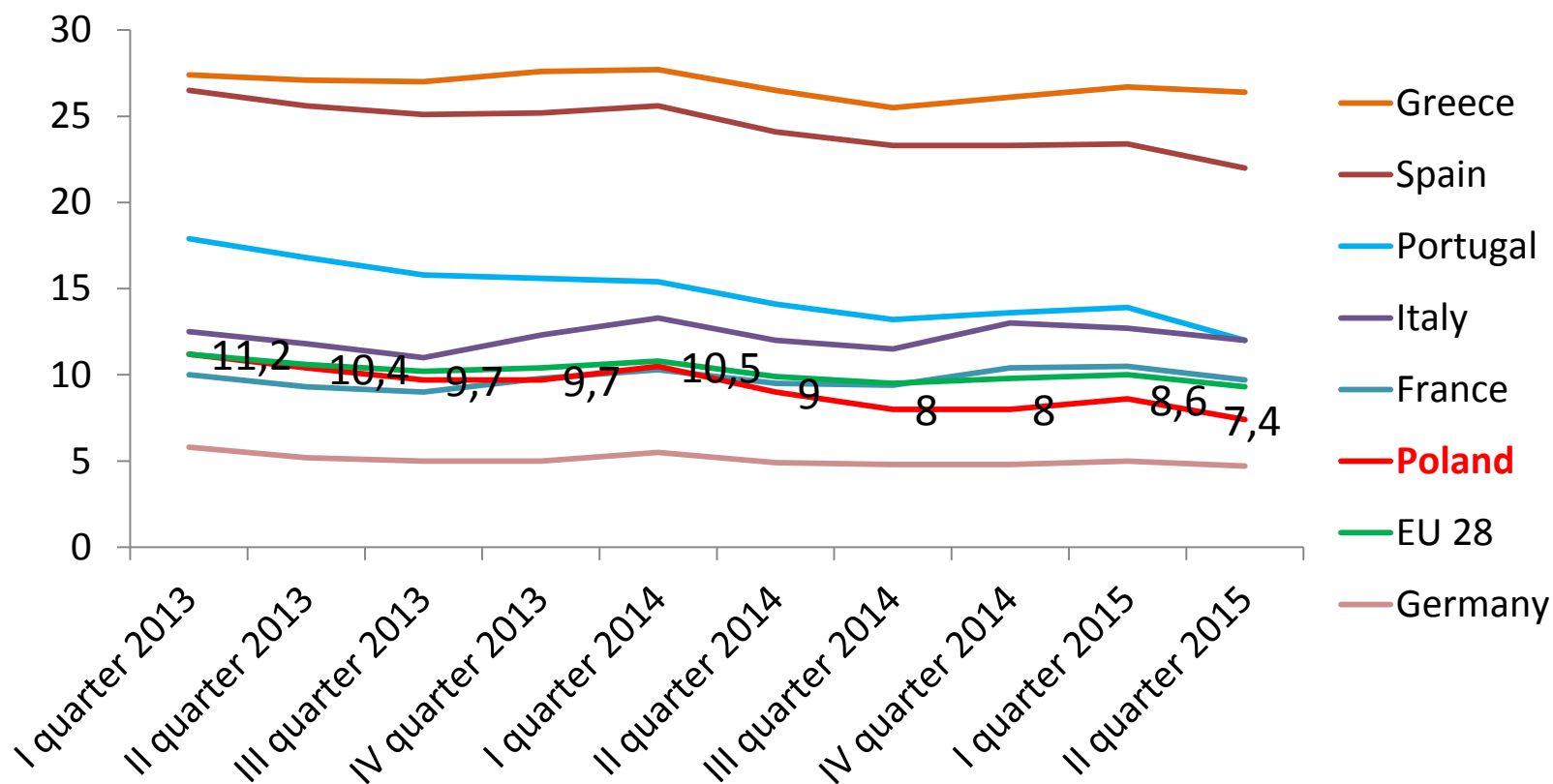


The employment rate in the EU and in Poland (20-64) – 2013 – 2015

The employment rate - II quarter 2015 r.

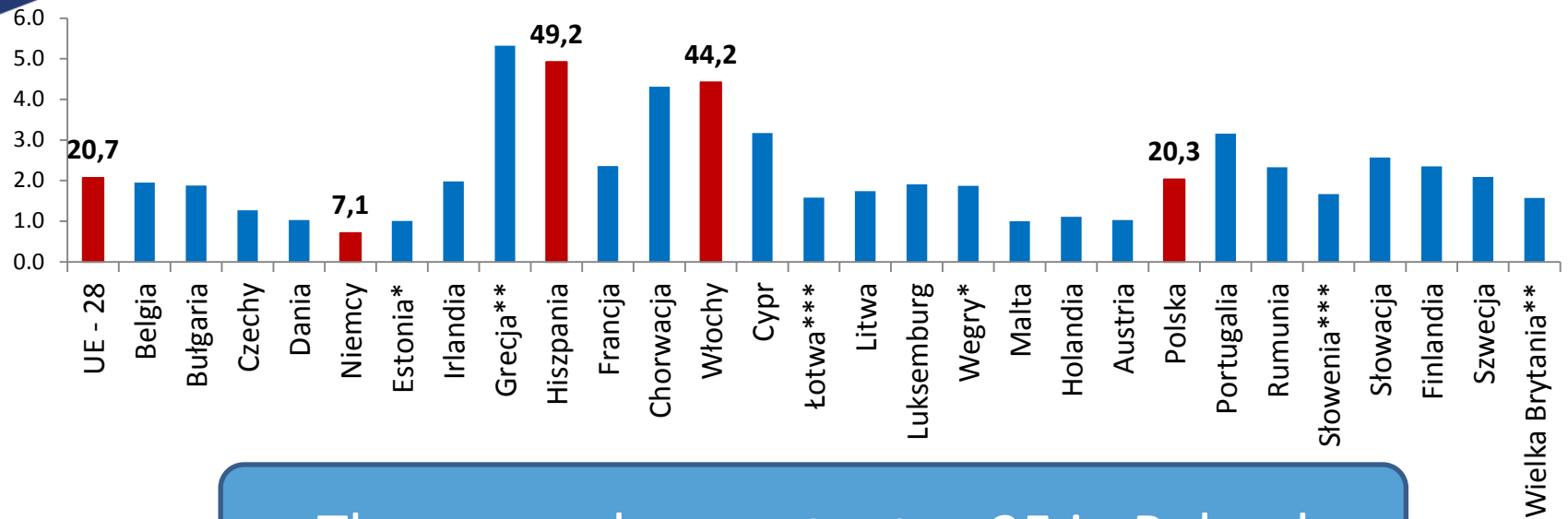


Unemployment in Poland (20-64) and in selected EU countries 2013 – 2015 (quarterly frame, Eurostat)

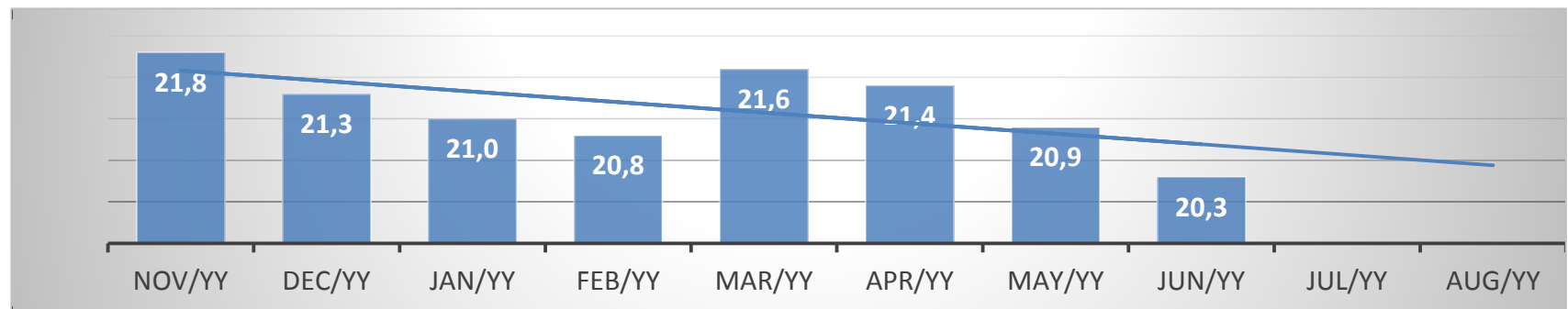


Source: Eurostat

The unemployment rate <25 in the EU



The unemployment rate <25 in Poland



QUANTITATIVE CHANGES vs. QUALITY CHANGES IN THE LABOUR MARKET

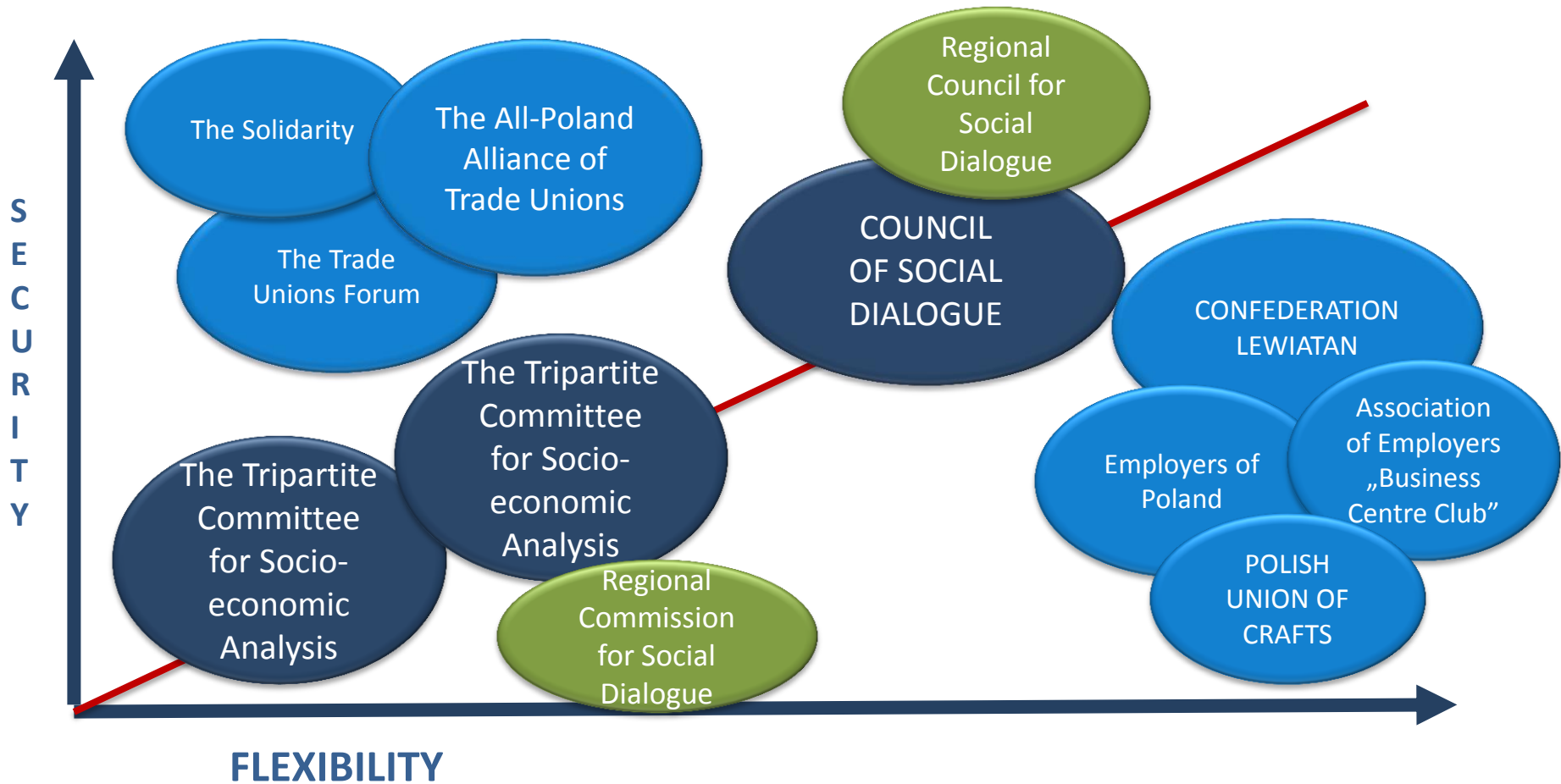
A change in the law on social insurance system effect and changes in the Public Procurement Law (a civil insurance contribution on contract of mandate) will enter to force from 1 January 2016.

Changes in the rules for the employment for a specified-purpose contracts will enter to force in February 2016

A changes in regulations that concern the rights related to the duties of the parent will enter to force in January 2016.

11 September 2015 – The Council for Social Dialogue has replaced The Tripartite Committee for Socio-economic Analysis

The impact of dialogue on the labor market



The effects of the new labor market policy in the context of an inclusive labor market

- **The new instruments improve the situation of young people in the labor market, tighter involving business and other labor market institutions,**
- **The new labor market policy generates comprehensive changes (trainings and internships, directions ordered, study of the fate of professional graduates),**
- **Support for young entrepreneurship with the instrument of renewables in the formula of academic entrepreneurship,**
- **New instruments for people 50+ in the form of continuing education and subsidized employment,**
- **New tools for parents returning to the labor market and a promotion of women employment,**
- **Investment in the mobilization of long-term unemployed and people furthest from the labour market by new instruments and the public – public, public – social and public – private partnerships.**