



European Parliament  
Hearings on ALMPs in the Active Inclusion Strategy  
3 December 2015, Brussels

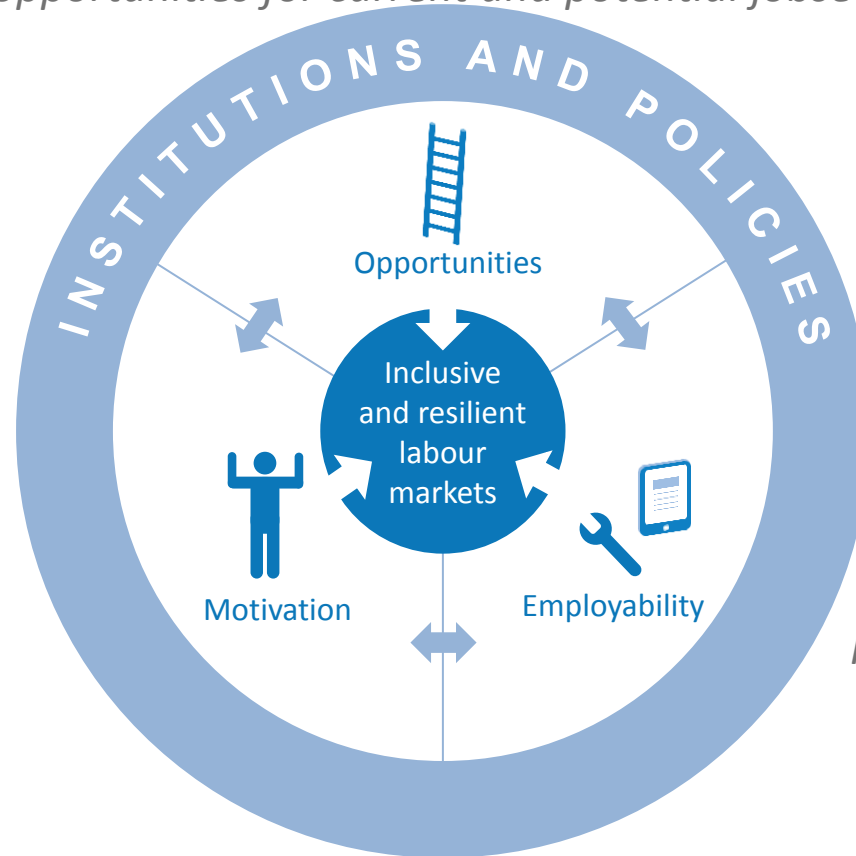
# ACTIVATION POLICIES FOR MORE INCLUSIVE LABOUR MARKETS

Paul Swaim  
Senior Economist & Editor of the *OECD Employment Outlook*  
Directorate of Employment, Labour and Social Affairs



# Active inclusion requires that ALMPs be integrated into an overall activation policy

*Addressing demand-side barriers and expanding employment opportunities for current and potential jobseekers*



*Ensuring that current and potential jobseekers have the motivation to seek work*

*Intensive case management, placement services and participation in ALMPs to increase employability*



# MOTIVATION





# A special effort is needed to motivate persons distant from the labour market

---

Tax and benefit policies must ensure that “work pays”

Persons far from the labour market may need intensive help to overcome discouragement

“Mutual obligations” frameworks apply to recipients of unemployment and other benefits

But conditionality must be applied with care to less job ready persons



# EMPLOYABILITY





# Employability requires major investments for persons distant from the labour market

---

Intensive (and expensive) forms of ALMPs will more often be required

These include remedial education and vocational training, as well as protected work

For disadvantaged youth, intensive residential programmes have shown good results

Integration programmes for migrants often include language instruction and skills recognition



# OPPORTUNITIES





## Demand-side measures to improve employment opportunities are often needed for persons distant from the labour market

---

The PES needs to work effectively with local employers

Hiring subsidies may be required for some persons requiring special on-the-job accommodations

It is also important to involve employers in prevention (e.g. when mental health issues arise)

Keeping overall unemployment low is a precondition for activating less job ready persons





# POLICIES AND INSTITUTIONS



## Effective and efficient labour market policies and institutions: The PES needs help to activate persons distant from the labour market

---

The PES can typically assist the newly unemployed on its own

Persons further from the labour market require a wider mix of services

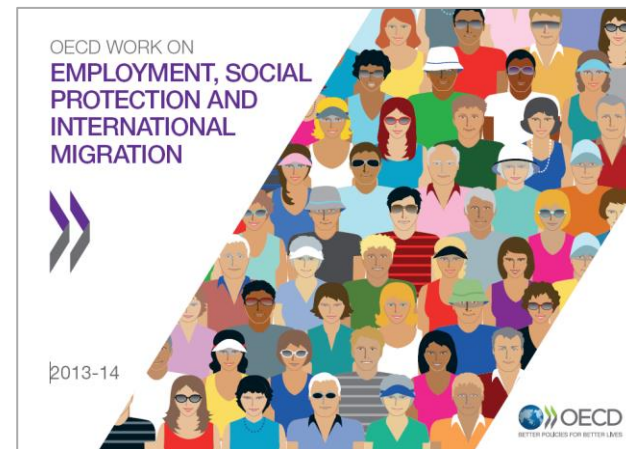
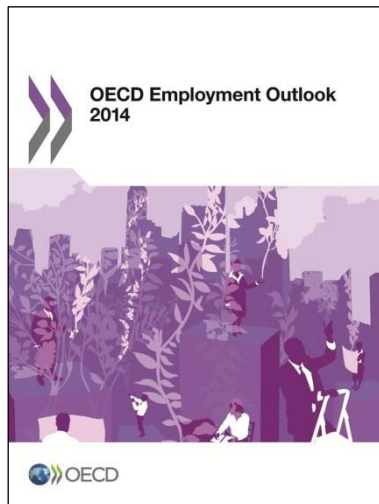
A key institutional challenge is thus to provide integrated services

For example, medical, housing and employment services



# Thank you

Read more about our work



Email: [paul.swaim@oecd.org](mailto:paul.swaim@oecd.org)

Website: [www.oecd.org/employment/outlook](http://www.oecd.org/employment/outlook)

Follow us on Twitter : [@OECD Social](https://twitter.com/OECD_Social)