



COMMISSION OF THE EUROPEAN COMMUNITIES

Brussels, 29.9.2006  
SEC(2006) 1218

**COMMISSION STAFF WORKING DOCUMENT**

*Accompanying document to the*

**Report from the Commission to the Council and the European Parliament on the implementation of Council Regulation (EC) No 104/2000 on the common organisation of the markets in fishery and aquaculture products**

{COM(2006) 558 final}

## ANNEX 1

### **List of legislation pertaining to the Common Market Organisation**

#### ***Basic and Implementing Regulations***

- *Council Regulation (EC) No 104/2000* of 17 December 1999 on the common organisation of the markets in fishery and aquaculture products (OJ L 17, 21.1.2000, p. 22), amended by
  - *The 2003 Act of Accession* (OJ L 236, 23.9.2003, p. 33)
- *Commission Regulation (EC) No 1886/2000* of 6 September 2000 laying down detailed rules for the application of Council Regulation (EC) No 104/2000 as regards the extension to non-members of certain rules adopted by producers' organisations in the fisheries sector (OJ L 227, 7.9.2000, p. 11), amended by
  - *Commission Regulation (EC) No 1812/2001* of 14 September 2001 (OJ L 246, 15.9.2001, p. 8)
- *Commission Regulation (EC) No 1924/2000* of 11 September 2000 laying down detailed rules for the application of Council Regulation (EC) No 104/2000 as regards the grant of specific recognition to producers' organisations in the fisheries sector in order to improve the quality of their products (OJ L 230, 12.9.2000, p.5)
- *Commission Regulation (EC) No 1925/2000* of 11 September 2000 establishing the operative events for the exchange rates to be applied when calculating certain amounts provided for by the mechanisms of Council Regulation (EC) No 104/2000 on the common organisation of the market in fishery and aquaculture products (OJ L 230, 12.09.2000, p. 7)
- *Commission Regulation (EC) No 2508/2000* of 15 November 2000 laying down the detailed rules for the application of Council Regulation (EC) No 104/2000 as regards operational programmes in the fisheries sector (OJ L 289, 16.11.2000, p. 8)
- *Commission Regulation (EC) No 2509/2000* of 15 November 2000 laying down detailed rules for the application of Council Regulation (EC) No 104/2000 as regards granting financial compensation for withdrawals of certain fishery products (OJ L 289, 16.11.00, p.11)
- *Commission Regulation (EC) No 2813/2000* of 21 December 2000 laying down detailed rules for the application of Council Regulation (EC) No 104/2000 as regards granting private storage aid for certain fishery products (OJ L 326, 22.12.2000, p.30)
- *Commission Regulation (EC) No 2814/2000* of 21 December 2000 laying down detailed rules for the application of Council Regulation (EC) No 104/2000 as regards granting carry-over aid for certain fishery products (OJ L 326, 22.12.2000, p. 34)
- *Commission Regulation (EC) No 80/2001* of 16 January 2001 laying down detailed rules for the application of Council Regulation (EC) No 104/2000 as regards notifications concerning recognition of producer organisations, the fixing of prices and intervention within the scope of the common organisation of the market in fishery and aquaculture products (OJ L 13, 17.1.2001, p 3), amended by
  - *Commission Regulation (EC) No 2494/2001* of 19 December 2001 as regards the options for disposing of fishery products withdrawn from the market (OJ L 337, 20.12.2001, p 22)
  - *The 2003 Act of Accession* (OJ L 236, 23.9.2003, p. 33)
- *Commission Regulation (EC) No 150/2001* of 25 January 2001 laying down detailed rules for the application of Council Regulation (EC) No 104/2000 as regards the penalties to be applied to producer organisations in the fisheries sector for irregularity of the intervention mechanism and amending Regulation (EC) No 142/98 (OJ L 24, 26.1.2001, p. 10)

- *Commission Regulation (EEC) No 939/2001* of 14 May 2001 laying down detailed rules for the application of Council Regulation (EC) No 104/2000 as regards the grant of flat-rate aid for certain fisheries products (OJ L 132, 15.05.2001 p. 10)
- *Commission Regulation (EC) No 1813/2001* of 14 September 2001 laying down the detailed rules for the application of Council Regulation (EC) No 104/2000 as regards the conditions for, the grant of and the withdrawal of recognition of interbranch organisations (OJ L 246, 15.9.2001 p. 7)
- *Commission Regulation (EC) No 2065/2001* of 22 October 2001 laying down detailed rules for the application of Council Regulation (EC) No 104/2000 as regards informing consumers about fishery and aquaculture products (OJ L 278, 23.10.2001 p. 6), amended by
  - *The 2003 Act of Accession* (OJ L 236, 23.9.2003, p. 33)
- *Commission Regulation (EC) No 2183/2001* of 9 November 2001 laying down detailed rules for the application of Council Regulation (EC) No 104/2000 as regards granting the compensatory allowance for tuna intended for the processing industry (OJ L 293, 10.11.2001, p. 11)
- *Commission Regulation (EEC) No 3510/82* of 23 December 1982 fixing the conversion factors applicable to tuna (OJ L 368, 28.12.1982, p. 27), amended by
  - *Commission Regulation (EEC) No 3940/87* of 21 December 1987 (OJ L 373, 31.12.1987, p. 6)
  - *Commission Regulation (EEC) No 3971/89* of 20 December 1989 (OJ L 385, 30.12.1989, p. 35)
  - *Commission Regulation (EEC) No 3899/92* of 23 December 1992 (OJ L 392, 31.12.1992, p. 24)
- *Commission Regulation (EC) No 2318/2001* of 29 November 2001 laying down detailed rules for the application of Council Regulation (EC) No 104/2000 as regards the recognition of producer organisations in the fishery and aquaculture sector (OJ L 313, 30.11.2001, p. 9), amended by
  - *Commission Regulation (EC) No 1767/2004* of 13 October 2004 (OJ L 315, 14.10.2004, p. 28)
- *Commission Regulation (EC) No 2493/2001* of 19 December 2001 on the disposal of certain fishery products which have been withdrawn from the market (OJ L 337, 20.12.2001, p. 20)
- *Commission Regulation (EC) No 2306/2002* of 20 December 2002 laying down detailed rules for the application of Council Regulation (EC) No 104/2000 as regards the notification of the prices of imported fishery products (OJ L 348, 21.12.2002, p. 94)

### ***Common Marketing Standards***

- *Council Regulation (EC) No 2406/96* of 26 November 1996 laying down common marketing standards for certain fishery products (OJ L 334, 23.12.1996 p. 1), amended by
  - *Commission Regulation (EC) No 323/97* of 21 February 1997 (OJ L 52, 22.2.1997, p. 8)
  - *Council Regulation (EC) No 2578/2000* of 17 November 2000 (OJ L 298, 25.11.2000, p. 1)
  - *Commission Regulation (EC) No 2495/2001* of 19 December 2001 (OJ L 337, 20.12.2001, p. 23)
  - *The 2003 Act of Accession* (OJ L 236, 23.9.2003, p. 33)
  - *Commission Regulation (EC) No 790/2005 of 25 May 2005* (OJ L 132, 26.5.2005, p. 15)
- *Commission Regulation (EEC) No 3703/85* of 23 December 1985 laying down detailed rules for applying the common marketing standards for certain fresh or chilled fish (OJ L 351, 28.12.1985, p. 63), amended by
  - *Commission Regulation (EEC) No 3506/89* of 23 November 1989 (OJ L 342, 24.11.1989, p. 11)

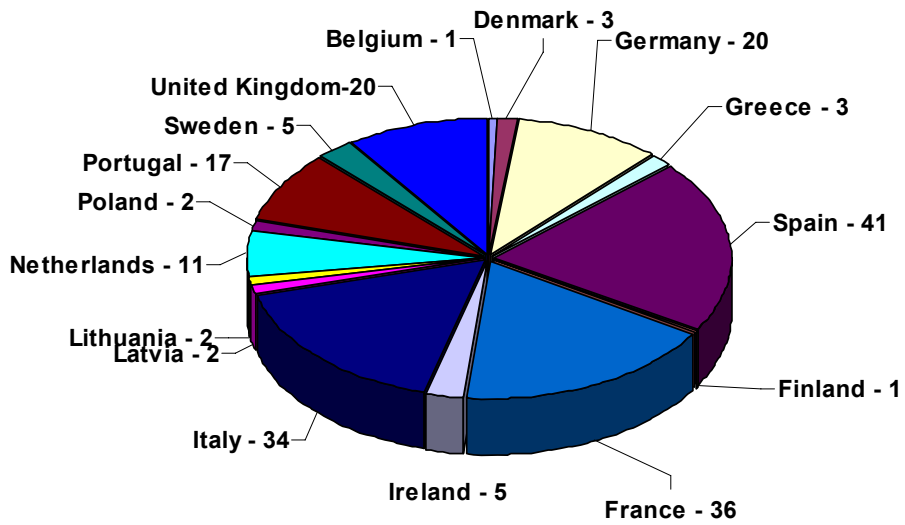
- *Council Regulation (EEC) No 2136/89* of 21 June 1989 laying down common marketing standards for preserved sardines (O J L 212, 22.07.1989 p. 79), amended by
  - *Commission Regulation (EC) No 1181/2003* of 2 July 2003 (O J L 165, 3.7.2003 p. 17)
- *Council Regulation (EEC) No 1536/92* of 9 June 1992 laying down common marketing standards for preserved tuna and bonito (O J L 163 , 17.06.1992, p. 1)

### ***Other regulations***

- *Commission Regulation (EC) No 1093/94* of 6 May 1994 setting the terms under which fishing vessels of a third country may land directly and market their catches at Community ports (O J L 121, 12.5.1994, p. 3)
- *Council Regulation (EC) No 2792/1999* of 17 December 1999 laying down the detailed rules and arrangements regarding Community structural assistance in the fisheries sector (O J L 337, 30.12.1999, p 10)
- *Commission Regulation (EC) No 908/2000* of 2 May 2000 laying down detailed rules for calculating aid granted by Member States to producer organisations in the fisheries and aquaculture sector (O J L 105, 3.5.2000, p. 15), amended by
  - *Commission Regulation (EC) No 2438/2000* of 3 November 2000 (O J L 280, 4.11.2000, p 37)
- *Council Regulation (EC) No 379/2004* of 24 February 2004 opening and providing for the management of autonomous Community tariff quotas for certain fishery products for the period 2004 to 2006 (O J L 64, 2.3.2004, p 7)

ANNEX 2

**Producer Organisations in the European Union  
2005**



**ANNEX 3**

**Operational programmes expenses  
2001-2004**

€ 000

	2001	2002	2003	2004
<b>Belgium</b>	22	43	43	32
<b>Denmark</b>		159	139	129
<b>Germany</b>		360	492	481
<b>Greece</b>				
<b>Spain</b>		672	744	753
<b>France</b>	334	856	918	754
<b>Ireland</b>	19	97	41	63
<b>Italy</b>		76	83	246
<b>Netherlands</b>			382	257
<b>Austria</b>				
<b>Portugal</b>	99	384	455	412
<b>Finland</b>		15		
<b>Sweden</b>	81	159	158	183
<b>United Kingdom</b>				
<b>Total EU</b>	545	2.822	3.455	3.311

**ANNEX 4**

**Evolution market prices and guide prices 2001-2004**

	2001			2002			2003			2004		
	Market price	Guide price	Market price/ Guide price	Market price	Guide price	Market price/ Guide price	Market price	Guide price	Market price/ Guide price	Market price	Guide price	Market price/ Guide price
<b>Annex I - Fresh products</b>												
Herring	579	252	<b>230 %</b>	491	260	<b>189 %</b>	376	268	<b>140 %</b>	381	267	<b>143 %</b>
Sardines	586	550	<b>107 %</b>	691	561	<b>123 %</b>	678	572	<b>119 %</b>	701	581	<b>121 %</b>
Dogfish	1.726	1.079	<b>160 %</b>	1.846	1.101	<b>168 %</b>	1.701	1.112	<b>153 %</b>	1.643	1.112	<b>148 %</b>
Spotted dogfish	592	814	<b>73 %</b>	1.107	790	<b>140 %</b>	943	782	<b>121 %</b>	1.065	759	<b>140 %</b>
Redfish	1.744	1.154	<b>151 %</b>	1.864	1.171	<b>159 %</b>	2.463	1.189	<b>207 %</b>	1.749	1.177	<b>149 %</b>
Cod	2.208	1.560	<b>142 %</b>	2.343	1.591	<b>147 %</b>	2.191	1.631	<b>134 %</b>	2.179	1.631	<b>134 %</b>
Coalfish/Saithe	1.011	782	<b>129 %</b>	867	790	<b>110 %</b>	742	806	<b>92 %</b>	734	766	<b>96 %</b>
Haddock	1.511	1.052	<b>144 %</b>	1.224	1.073	<b>114 %</b>	1.139	1.062	<b>107 %</b>	1.221	998	<b>122 %</b>
Whiting	1.247	911	<b>137 %</b>	1.227	929	<b>132 %</b>	1.203	952	<b>126 %</b>	1.423	923	<b>154 %</b>
Ling	2.120	1.196	<b>177 %</b>	2.158	1.214	<b>178 %</b>	1.973	1.226	<b>161 %</b>	1.985	1.214	<b>164 %</b>
Mackerel	1.026	287	<b>357 %</b>	1.226	294	<b>417 %</b>	1.245	303	<b>411 %</b>	1.469	308	<b>477 %</b>
Spanish Mackerel	1.024	306	<b>335 %</b>	869	315	<b>276 %</b>	612	321	<b>191 %</b>	467	311	<b>150 %</b>
Anchovy	1.370	1.197	<b>114 %</b>	1.714	1.209	<b>142 %</b>	2.342	1.215	<b>193 %</b>	2.390	1.245	<b>192 %</b>
Plaice (January -April)	1.720	1.052	<b>163 %</b>	1.604	1.063	<b>151 %</b>	1.830	1.063	<b>172 %</b>	1.821	1.079	<b>169 %</b>
Plaice (May- December)	1795	1.448	<b>124 %</b>	1.909	1.462	<b>131 %</b>	2.071	1.462	<b>142 %</b>	1.842	1.499	<b>123 %</b>
Hake	4.470	3.695	<b>121 %</b>	4.859	3.695	<b>132 %</b>	4.679	3.750	<b>125 %</b>	4.686	3.731	<b>126 %</b>
Megrim	3.022	2.382	<b>127 %</b>	3.673	2.382	<b>154 %</b>	3.784	2.406	<b>157 %</b>	4.075	2.442	<b>167 %</b>
Dab	1.134	923	<b>123 %</b>	1.081	937	<b>115 %</b>	959	923	<b>104 %</b>	1.147	877	<b>131 %</b>
Common flounder	550	552	<b>100 %</b>	589	552	<b>107 %</b>	599	552	<b>109 %</b>	590	530	<b>111 %</b>
Albacore (whole)	2.462	2.145	<b>115 %</b>	3.327	2.188	<b>152 %</b>	2.841	2.232	<b>127 %</b>	2.845	2.265	<b>113 %</b>
Albacore (guttred with head)	3.073	2.452	<b>125 %</b>	2.750	2.477	<b>111 %</b>	3.000	2.502	<b>120 %</b>	2.735	2.515	<b>167 %</b>
Cuttlefish	2.202	1.589	<b>139 %</b>	2.288	1.613	<b>142 %</b>	1.976	1.637	<b>121 %</b>	1.847	1.637	<b>113 %</b>
Monkfish (whole)	5.223	2.826	<b>185 %</b>	5.050	2.868	<b>176 %</b>	4.454	2.897	<b>154 %</b>	4.541	2.926	<b>155 %</b>
Monkfish (without head)	9.367	5.840	<b>160 %</b>	9.192	5.928	<b>155 %</b>	8.397	5.928	<b>142 %</b>	8.926	5.898	<b>151 %</b>
Shrimps (Crangon)	3.674	2.429	<b>151 %</b>	3.419	2.478	<b>138 %</b>	2.588	2.478	<b>104 %</b>	2.488	2.391	<b>104 %</b>
Northern prawns (boiled)	4.931	6.547	<b>75 %</b>	4.472	6.612	<b>68 %</b>	7.378	6.678	<b>110 %</b>	6.023	6.411	<b>94 %</b>
Northern prawns (fresh)	1.732	1.707	<b>101 %</b>	1.556	1.707	<b>91 %</b>	1.497	1.690	<b>89 %</b>	1.258	1.639	<b>77 %</b>
Edible crab	1.766	1.784	<b>99 %</b>	1.771	1.784	<b>99 %</b>	1.589	1.766	<b>90 %</b>	1.607	1.766	<b>91 %</b>
Norway lobster (whole)	6.477	5.337	<b>121 %</b>	6.731	5.337	<b>126 %</b>	6.678	5.337	<b>125 %</b>	6.702	5.337	<b>126 %</b>
Norway lobster (tails)	5.206	4.280	<b>122 %</b>	5.100	4.323	<b>118 %</b>	4.623	4.366	<b>106 %</b>	4.943	4.279	<b>116 %</b>
Sole	9.598	6.518	<b>224 %</b>	9.416	6.648	<b>142 %</b>	9.439	6.648	<b>142 %</b>	9.480	6.748	<b>140 %</b>

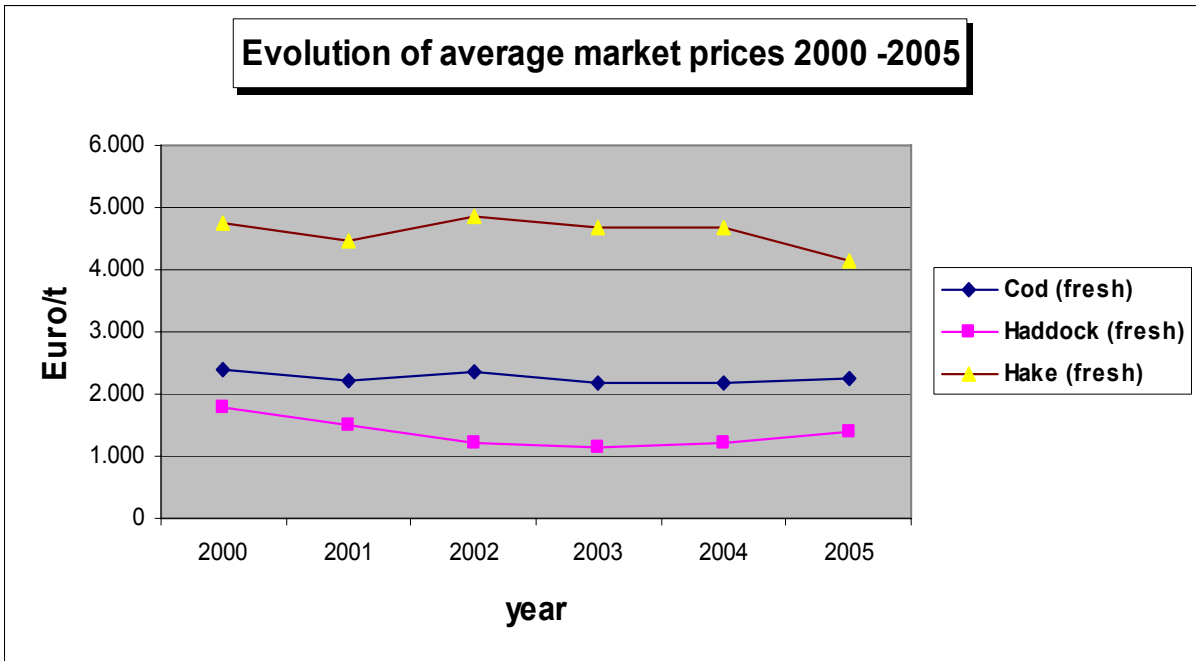
	2001			2002			2003			2004		
	Market price	Guide price	Market price/ Guide price	Market price	Guide price	Market price/ Guide price	Market price	Guide price	Market price/ Guide price	Market price	Guide price	Market price/ Guide price
<b>Annex II - Frozen products</b>												
Greenland halibut	3.124	1.937	<b>161 %</b>	2.561	1.976	<b>130 %</b>	2.059	1.996	<b>103 %</b>	2.353	1.956	<b>120 %</b>
Hake (whole)	1.500	1.277	<b>117 %</b>	942	1.277	<b>74 %</b>	845	1.271	<b>66 %</b>	1.124	1.258	<b>89 %</b>
Hake (fillets)	1.689	1.530	<b>110 %</b>	954	1.530	<b>62 %</b>	977	1.530	<b>64 %</b>	1.226	1.499	<b>82 %</b>
Sea bream	2.729	1.556	<b>175 %</b>	2.469	1.587	<b>156 %</b>	2.201	1.635	<b>135 %</b>	3.231	1.586	<b>204 %</b>
Swordfish	3.360	4.000	<b>84 %</b>	3.464	4.080	<b>85 %</b>	3.895	4.060	<b>96 %</b>	4.407	4.019	<b>110 %</b>
Cuttlefish	2.616	1.928	<b>136 %</b>	2.501	1.928	<b>130 %</b>	2.454	1.986	<b>124 %</b>	2.059	2.006	<b>103 %</b>
Octopus	4.592	1.987	<b>231 %</b>	4.414	1.987	<b>222 %</b>	4.493	2.057	<b>218 %</b>	5.111	2.119	<b>241 %</b>
Squid (Loligo spp.)	5.157	1.133	<b>455 %</b>	4.009	1.156	<b>347 %</b>	4.109	1.156	<b>355 %</b>	7.586	1.168	<b>649 %</b>
Squid (Ommastrephes sag.)	700	961	<b>73 %</b>	1.010	961	<b>105 %</b>	-	961	-	-	961	-
Illex argentinus	-	839	-	733	831	<b>88 %</b>	1.128	848	<b>133 %</b>	996	848	<b>117 %</b>
Prawns (Parapenaeus)	6.853	4.078	<b>168 %</b>	5.338	4.119	<b>130 %</b>	4.354	4.160	<b>105 %</b>	5.886	4.035	<b>146 %</b>
Prawns (other Penaeidae)	8.797	7.903	<b>111 %</b>	9.673	7.982	<b>121 %</b>	10.494	7.982	<b>131 %</b>	9.831	8.142	<b>121 %</b>
<b>Annex III - Tuna for processing</b>												
Yellowfin tuna	1.244	1.172	<b>106 %</b>	1.364	1.172	<b>116 %</b>	1.191	1.207	<b>99 %</b>	1.090	1.219	<b>89 %</b>

Source: Data sent under Regulation 80/2001

The Data as for 2002 comes from FIDES - MIS2000



**ANNEX 5**



**ANNEX 6****Total intervention expenses  
1992-2004**

€ 000

	1992	1993	1994	1995	1996	1997	1998	1999	2000	2001	2002	2003	2004
<b>Belgium</b>	132	375	82	300	200	200	100		37	54	89	111	91
<b>Denmark</b>	1.407	3.508	5.426	5.900	8.400	3.400	1.800	1.100	1.169	276	351	681	840
<b>Germany</b>	2.009	309	398	300	300								
<b>Greece</b>	740	855	1.056	900			100	100	32	27	10		
<b>Spain</b>	11.468	8.332	7.977	3.100	200	5.955	200	200	456	6.346	3.329	158	925
<b>France</b>	9.852	9.190	11.237	10.000	6.530	5.500	3.000	2.523	3.928	3.021	3.194	3.751	3.271
<b>Ireland</b>	1.880	2.585	2.178	3.100	3.030	1.400	1.500	1.700	1.070	682	2.808	1.729	2.672
<b>Italy</b>	1.371	1.293	696	700							1	107	69
<b>Netherlands</b>	29	82	35	200	100	100	100	100	59	20	15		176
<b>Austria</b>													
<b>Portugal</b>	1.596	1.829	2.120	1.600	1.000	1.500	900	900	766	1.319	1.711	1.057	921
<b>Finland</b>										4	35		
<b>Sweden</b>				200	2.340	500	400	300	267	208	43	182	433
<b>United Kingdom</b>	1.591	2.041	1.835	1.800	3.100	3.100	2.700	800	1.518	564	845	1.284	951
<b>Total EU</b>	32.075	30.399	33.040	28.100	25.316	21.809	10.800	7.723	9.302	12.521	12.431	9.060	10.350

**ANNEX 7**

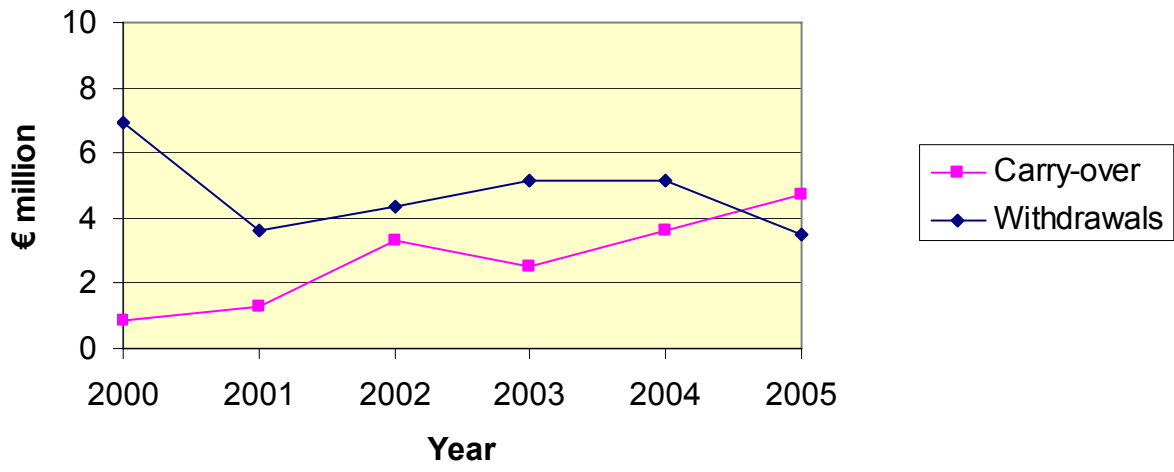
**Community withdrawals and carry-over expenses  
1992-2004**

€ 000

	1992	1993	1994	1995	1996	1997	1998	1999	2000	2001	2002	2003	2004
<b>Belgium</b>			65	300	200	100			28	21	37	53	35
<b>Denmark</b>			5.449	5.000	8.300	3.300	1.800	1.100	1.147	266	342	674	816
<b>Germany</b>	67	249	398	300	300								
<b>Greece</b>		23	37				100	100	32	27	10		
<b>Spain</b>	60	167	453	100	200	100	100	200	177	263	489	89	701
<b>France</b>	2.613	3.245	4.793	6.500	5.400	3.700	2.400	2.100	3.303	1.930	2.382	2.561	2.338
<b>Ireland</b>	1.546	2.156	1.667	2.000	1.900	1.200	1.100	700	1.001	612	1.811	1.725	2.416
<b>Italy</b>											1	107	69
<b>Netherlands</b>					100	100	100	100	57	19			169
<b>Austria</b>													
<b>Portugal</b>	716	1.148	1.019	1.300	800	1.000	800	700	570	1.212	1.652	972	840
<b>Finland</b>										4	35		
<b>Sweden</b>										25	43	182	433
<b>United Kingdom</b>	1.580	2.038	1.834	1.800	3.100	3.100	2.700	800	1.471	550	834	1.274	951
<b>Total EU</b>	6.582	9.026	15.714	17.300	20.267	12.535	9.309	5.856	7.786	4.928	7.637	7.637	8.768

**ANNEX 8**

**Community withdrawals and carry-over expenses  
2000-2005**



ANNEX 9

**Independent withdrawals and carry-over expenses  
1992-2004**

€ 000

	1992	1993	1994	1995	1996	1997	1998	1999	2000	2001	2002	2003	2004
<b>Belgium</b>	132	375	17			100			9	33	52	58	57
<b>Denmark</b>	1.407	3.508	-23	900	100	100			22	10	9	7	24
<b>Germany</b>													
<b>Greece</b>													
<b>Spain</b>									42	105	91	69	176
<b>France</b>			821	1.000	1.130	1.100	600	400	580	592	718	1.190	933
<b>Ireland</b>	334	429	511	1.100	1.130	200	400	1.000	69	70	997	4	257
<b>Italy</b>													
<b>Netherlands</b>	29	82	35	200					2	1	15		7
<b>Austria</b>													
<b>Portugal</b>	384	459	404	200	200	200	100	200	123	106	59	85	81
<b>Finland</b>													
<b>Sweden</b>				200	2.340	500	400	300	267	183			
<b>United Kingdom</b>	11	3	1						47	14	11	10	-1
<b>Total EU</b>	2.297	4.856	1.767	3.600	4.906	2.194	1.598	2.055	1.161	1.115	1.952	1.422	1.533

**ANNEX 10**

**Private storage expenses  
1992-2004**

€ 000

	1992	1993	1994	1995	1996	1997	1998	1999	2000	2001	2002	2003	2004
<b>Belgium</b>													
<b>Denmark</b>													
<b>Germany</b>													
<b>Greece</b>													
<b>Spain</b>	129	402	-53			455			11	-1	25		49
<b>France</b>													
<b>Ireland</b>													
<b>Italy</b>													
<b>Netherlands</b>													
<b>Austria</b>													
<b>Portugal</b>	49												
<b>Finland</b>													
<b>Sweden</b>													
<b>United Kingdom</b>													
<b>Total EU</b>	178	402	-53			455			11	-1	25		49

**ANNEX 11**

**Compensatory allowance for tuna expenses  
1992-2004**

€ 000

	1992	1993	1994	1995	1996	1997	1998	1999	2000	2001	2002	2003	2004
<b>Belgium</b>													
<b>Denmark</b>													
<b>Denmark</b>													
<b>Greece</b>													
<b>Spain</b>	11.279	7.763	7.577	3.000		5.400			226	5.979	2.724		
<b>France</b>	4.432	3.474	3.773	500		900		23	45	499	94		
<b>Ireland</b>													
<b>Italy</b>													
<b>Netherlands</b>													
<b>Austria</b>													
<b>Portugal</b>	447	222	697	100		300			73	1			
<b>Finland</b>													
<b>Sweden</b>													
<b>United Kingdom</b>													
<b>Total CE</b>	16.158	11.459	12.046	3.600		6.603		23	345	6.479	2.819		

ANNEX 12

**Production and withdrawals 2001-2004**

000 kg

	PRODUCTION				WITHDRAWALS				% WITHDRAWALS/PRODUCTION			
	2001	2002	2003	2004	2001	2002	2003	2004	2001	2002	2003	2004
Herring	200.506	203.036	204.446	198.686	507	610	4.481	3.763	0,25%	0,30%	2,19%	1,89%
Sardines	116.818	160.105	150.474	153.581	7.140	5.379	3.713	2.970	6,11%	3,36%	2,47%	1,93%
Mackerel	88.454	114.084	94.759	98.426	425	539	1.128	768	0,48%	0,47%	1,19%	0,78%
Spanish mackerel	6.922	11.048	14.996	25.027	33	31	56	65	0,48%	0,28%	0,37%	0,26%
Anchovy	33.558	59.944	38.471	46.187	1.155	985	590	406	3,44%	1,64%	1,53%	0,88%
Albacore	7.589	13.395	15.580	15.999	20	3	155	39	0,26%	0,02%	0,99%	0,25%
<b>PELAGIC FISH</b>	<b>453.847</b>	<b>561.612</b>	<b>518.726</b>	<b>537.906</b>	<b>9.280</b>	<b>7.547</b>	<b>10.122</b>	<b>8.009</b>	<b>2,04%</b>	<b>1,34%</b>	<b>1,95%</b>	<b>1,49%</b>
Cod	114.551	107.831	81.981	79.610	49	26	27	20	0,04%	0,02%	0,03%	0,03%
Haddock	51.519	70.067	56.722	55.698	805	3.087	2.403	915	1,56%	4,41%	4,24%	1,64%
Coalfish/Saithe	43.803	57.540	53.341	46.622	190	743	1.849	1.219	0,43%	1,29%	3,47%	2,61%
Redfish	3.470	3.225	4.229	4.232	14	9	48	45	0,40%	0,28%	1,14%	1,07%
Whiting	34.073	31.703	26.261	22.265	275	703	487	190	0,81%	2,22%	1,86%	0,86%
Hake	19.606	40.924	39.763	48.152	279	563	440	503	1,42%	1,38%	1,11%	1,05%
Plaice	43.397	91.018	86.739	79.654	182	282	87	128	0,42%	0,31%	0,10%	0,16%
Ling	13.952	20.443	18.338	17.410	2	17	30	39	0,01%	0,08%	0,16%	0,23%
Spotted dogfish	6.604	11.057	9.603	11.396	423	573	608	449	6,41%	5,18%	6,33%	3,94%
Dogfish	7.167	5.628	4.178	3.730	93	101	59	40	1,30%	1,79%	1,42%	1,06%



000 kg

	PRODUCTION				WITHDRAWALS				% WITHDRAWALS/PRODUCTION			
	2001	2002	2003	2004	2001	2002	2003	2004	2001	2002	2003	2004
Megrim	7.315	14.576	14.946	15.280	100	131	118	78	1,37%	0,90%	0,79%	0,51%
Monkfish (whole)	22.366	26.162	27.949	32.316	2	3	14	26	0,01%	0,01%	0,05%	0,08%
Monkfish (tails)	1.169	1.476	1.761	1.863	0	0	0	0	0,00%	0,00%	0,00%	0,01%
Dab	3.863	11.659	12.405	16.058	29	371	776	181	0,75%	3,18%	6,26%	1,13%
Flounder	8.699	12.702	9.003	10.291	20	38	55	40	0,23%	0,30%	0,61%	0,39%
Sole	16.321	31.489	31.883	31.780	0	0	2	26	0,00%	0,00%	0,01%	0,08%
<b>WHITE FISH</b>	<b>397.875</b>	<b>537.500</b>	<b>479.102</b>	<b>476.357</b>	<b>2.463</b>	<b>6.647</b>	<b>7.003</b>	<b>3.899</b>	<b>0,62%</b>	<b>1,24%</b>	<b>1,46%</b>	<b>0,82%</b>
Shrimps ( <i>Crangon</i> )	13.965	25.553	28.389	24.400	2	19	251	98	0,01%	0,07%	0,88%	0,40%
Northern prawns (fresh)	5.438	5.421	6.516	4.995	0	0	0	0	0,00%	0,00%	0,00%	0,00%
Northern prawns (boiled)	2.532	2.847	1.145	1.484	2	11	53	56	0,08%	0,39%	4,63%	3,80%
Norway lobster (whole)	29.596	28.167	26.445	26.696	0	1	0	16	0,00%	0,00%	0,00%	0,06%
Norway lobster (tails)	1.799	4.534	1.664	1.721	0	0	0	0	0,00%	0,00%	0,00%	0,00%
Edible crab	38.508	32.287	23.689	42.378	0	0	0	0	0,00%	0,00%	0,00%	0,00%
<b>CRUSTACEANS</b>	<b>91.838</b>	<b>98.809</b>	<b>87.848</b>	<b>101.674</b>	<b>4</b>	<b>31</b>	<b>304</b>	<b>171</b>	<b>0,00%</b>	<b>0,03%</b>	<b>0,35%</b>	<b>0,17%</b>
Cuttlefish	17.108	22.387	26.260	29.513	34	34	167	111	0,20%	0,15%	0,64%	0,38%
<b>OTHER</b>	<b>17.108</b>	<b>22.387</b>	<b>26.260</b>	<b>29.513</b>	<b>34</b>	<b>34</b>	<b>167</b>	<b>111</b>	<b>0,20%</b>	<b>0,15%</b>	<b>0,64%</b>	<b>0,38%</b>

The data comes out from the Data (FIDES - MIS 2000)

**ANNEX 13**

**Evolution of autonomous tariff quotas  
2000-2006**

Product				MFN duty	Reg. 2803/2000		Reg. 1771/2003		Reg. 379/2004	
Order No	CN Code	TARIC code	Description		Annual quota (t)	Quota duty	Annual quota (t)	Quota duty	Annual quota (t)	Quota duty
09.2758	ex 0302 70 00	20	Cod livers ( <i>Gadus morhua</i> , <i>Gadus ogac</i> , <i>Gadus macrocephalus</i> ) and fish liver of the species <i>Boreogadus saida</i> , fresh or chilled, for processing	10%	300	0%	300	0%	300	0%
09.2765	ex 0305 62 00  ex 0305 69 10	20 25 29 10	Cod ( <i>Gadus morhua</i> , <i>Gadus ogac</i> , <i>Gadus macrocephalus</i> ) and fish of the species <i>Boreogadus saida</i> , salted or in brine, but not dried or smoked, for processing	13%	10 000	0%	10 000	0%	10 000	0%
09.2785	ex 0307 49 59 ex 0307 99 11	10 10	Tubes of squid ( <i>Ommastrephes spp.</i> — excluding <i>Ommastrephes sagittatus</i> —, <i>Nototodarus spp.</i> , <i>Sepioteuthis spp.</i> ) and <i>Illex spp.</i> , frozen, <u>with skin and fins</u> for processing	8%	11 000	3.5%	20 000	3.5%	30 000 Addition "with skin and fins"	3.5%
09.2786	ex 0307 49 59 ex 0307 99 11	20 20	Squid ( <i>Ommastrephes spp.</i> — excluding <i>Ommastrephes sagittatus</i> —, <i>Nototodarus spp.</i> , <i>Sepioteuthis spp.</i> ) and <i>Illex spp.</i> , frozen whole, tentacles and fins, for processing	8%	500	3%	1 500	3%	1 500	3%

Product				MFN duty	Reg. 2803/2000		Reg. 1771/2003		Reg. 379/2004	
Order No	CN Code	TARIC code	Description		Annual quota (t)	Quota duty	Annual quota (t)	Quota duty	Annual quota (t)	Quota duty
09.2788	ex 0302 40 00 ex 0303 50 00 ex 0304 10 97 ex 0304 90 22	10 10 20 10	Herrings ( <i>Clupea harengus</i> , <i>Clupea pallasii</i> ), whole, head included, of a weight exceeding 140 g per piece or flaps or a weight exceeding 80 g per piece, excluding livers and roes, for processing	15%	20 000	0%	20 000	0%	20 000	0%
09.2790	ex 1604 14 16	20 30 95	Filets known as 'loins' of tunas and skipjack, for processing	24%	4 000	6%	4 000	6%	4 000	6%
09.2792	ex 1604 12 99	10	Herrings, spiced and/or vinegar-cured, in brine, preserved in barrels of at least 70 kg net drained weight, for processing	20%	5 000	6%	5 000	6%	6 000	6%
09.2794	ex 1605 20 99	45	Shrimps and prawns of the species <i>Pandalus borealis</i> ; cooked and peeled, for processing	20%	5 000	6%	7 000	6%	7 000	6%
09.2759	ex 0302 50 10 ex 0302 50 90 ex 0303 60 11 ex 0303 60 19 ex 0303 60 90	20 10 10 10 10	Cod ( <i>Gadus morhua</i> , <i>Gadus ogac</i> , <i>Gadus macrocephalus</i> ), excluding livers and roes, fresh, chilled or frozen, for processing	12% <sup>1</sup>			50 000	0%	50 000	0%

<sup>1</sup> Autonomous suspension to 3% for processing (Regulation 104/2000)

Product				MFN duty	Reg. 2803/2000		Reg. 1771/2003		Reg. 379/2004	
Order No	CN Code	TARIC code	Description		Annual quota (t)	Quota duty	Annual quota (t)	Quota duty	Annual quota (t)	Quota duty
09.2760	ex 0303 78 11 ex 0303 78 12 ex 0303 78 13 ex 0303 78 19  ex 0303 78 90	10 10 10 11 81 10	Hake ( <i>Merluccius spp.</i> excluding <i>Merluccius merluccius</i> , <i>Urophycis spp.</i> ), frozen, for processing	15%			20 000	0%	20 000	0%
29.2761	ex 0304 20 91 ex 0304 20 94  ex 0304 90 97	10 41 81 60 86	Blue grenadier ( <i>Macruronus spp.</i> ), frozen fillets and other meat, for processing	7.5% <sup>2</sup> 15% 15% 7.5% <sup>2</sup> 7.5% <sup>2</sup>			15 000	0%	15 000	0%
29.2762	ex 0306 11 10 ex 0306 11 90	10 10	Rock lobster ( <i>Palinurus spp.</i> , <i>Panulirus spp.</i> , <i>Jassus spp.</i> ), frozen, for processing	12.5%			1 500	6%	1 500	6%
09.2766	ex 0304 20 94 ex 0304 90 97	70 88	Southern blue whiting ( <i>Micromesistius australis</i> ), frozen fillets and other meat, for processing	15% 7.5%					2 000	0%
09.2768	ex 0303 79 55	31	Alaska pollack ( <i>Theragra chalcogramma</i> ), frozen, for processing	15%					10 000	0%
09.2770	ex 0305 63 00	10	Anchovies ( <i>Engraulis anchoita</i> ), salted or in brine, but not dried or smoked, for processing	10%					2 000	0%
09.2772	ex 0304 90 05	10	Surimi, frozen, for processing	15% <sup>2</sup>					30 000	0%

2

Autonomous suspension to 3.5% for processing (Regulation 104/2000)

## APPENDICES

## EU and world market situation

*World total production of fishery products, i.e. captures plus aquaculture production, increased by 35% during the period 1992-2003 (see Appendix 1). This upward trend is mainly due to a two and a half fold expansion of aquaculture since catches tended to remain stable over this period. On the other hand, EU25's total production decreased by 9% between 1992 and 2003 (see Appendix 2). The reason is a 16% drop in catches as a result of the depletion of some major fish stocks. Although EU25's aquaculture rose by 45% and expanded from 12% to 19% of EU25's total production in 1992-2003, the volumes of farmed products did not compensate for the strong decrease in catches. In 2003 the EU25 accounted for 5% of the world total production, making it the second world producer after China (see Appendix 3).*

*Within the EU25, Appendix 4 shows Member States' production in 2003. The main producer was Spain with a share of 17%, followed by Denmark (15%), France (13%), the UK (11%) and the Netherlands (8%). These Member States accounted for 64% of the EU25 total production. The Member States with largest volumes of catches were Denmark (18%), Spain (15%), France (12%), the UK (11%) and the Netherlands (9%). As for aquaculture, the leading producers were Spain (23%), France (18%), Italy (14%), the UK (13%) and Greece (7%).*

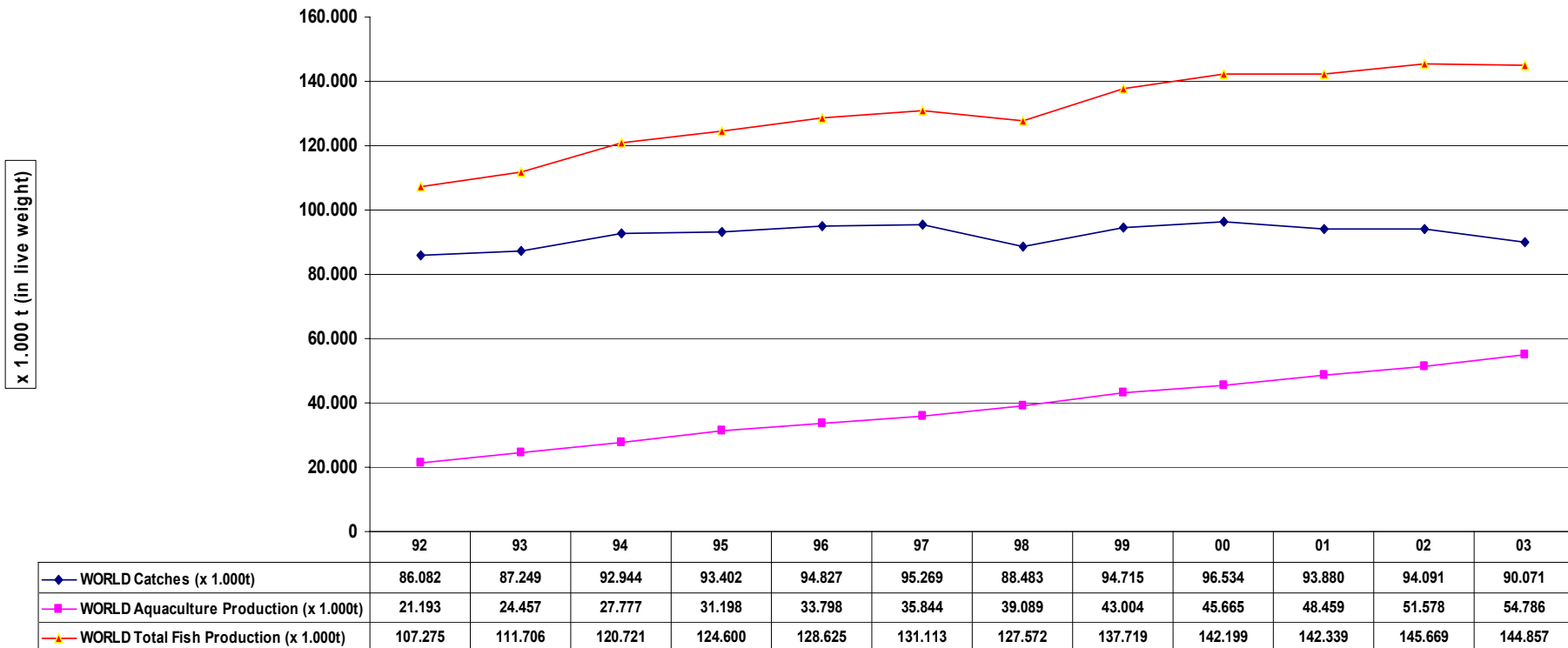
*The consumption of fisheries products expressed as available supply per person is on the increase in both the world and the EU15 (see Appendix 5). The per capita supply in the world rose by 46% during the period 1990-2001 and reached 20 kg/head in 2001. In the EU15, it stood at 24.6 kg/head in 2001, with an increase of 9% between 1990 and 2001. EU15's supply per person was around 23% higher than the world average in 2001. That year, the EU15 ranked as the tenth most important consumer worldwide (see Appendix 6). Within the EU25, Appendix 7 shows significant differences between Member States in 2001: whereas Portugal and Lithuania had the highest per capita supply (56.5 and 54.5 kg/head, respectively), Hungary, Slovenia and Slovakia were below 8 kg/head.*

*The continuous decrease in EU15 production since 1995 and the steady increases in both consumption and exports have boosted imports from third countries in order to satisfy the EU15's supply needs (see Appendix 8). Between 1990 and 1995, EU15's production and imports stood at similar levels in live weight. From 1996 onwards, imports rose significantly and reached 58% of EU15's total supply in 2001 while production accounted for only 42% (see Appendix 9). All in all, the EU25 has an overall negative trade balance in fisheries products. Spain, Denmark, Germany, the UK, Italy and France are the biggest importers in terms of volume (see Appendix 10).*

**APPENDIX 1**

**World catches and aquaculture production 1992 - 2003 (in live weight)**

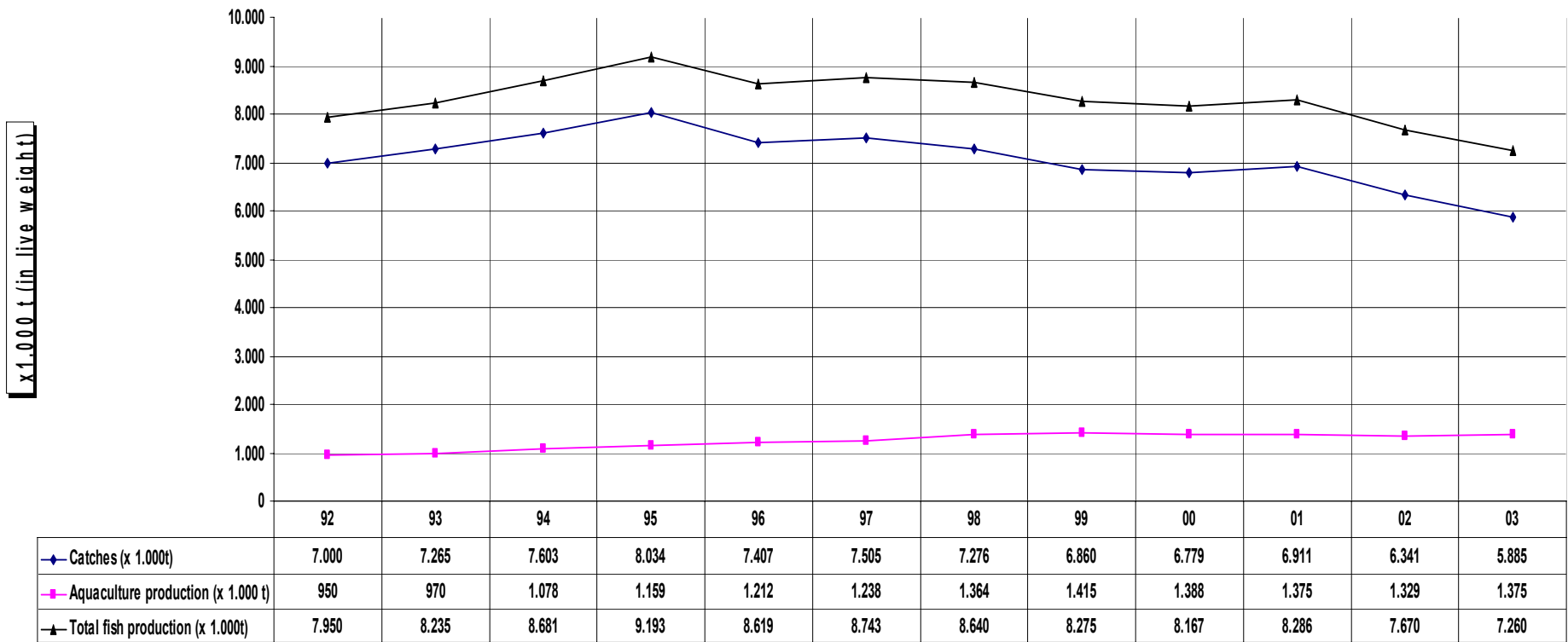
(Source: EUROSTAT)



**APPENDIX 2**

**EU25's catches and aquaculture production 1992 - 2003 (in live weight)**

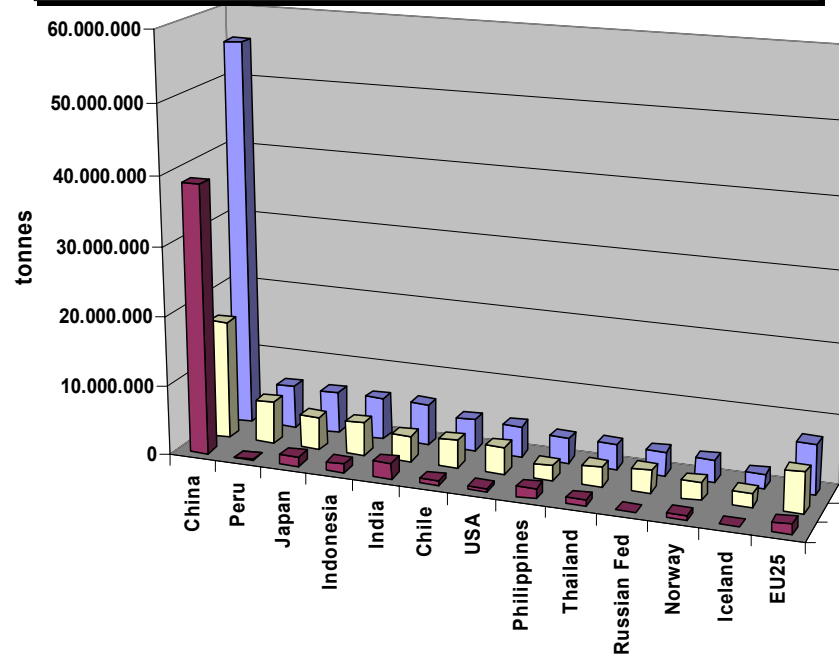
(Source: EUROSTAT)





**APPENDIX 3**

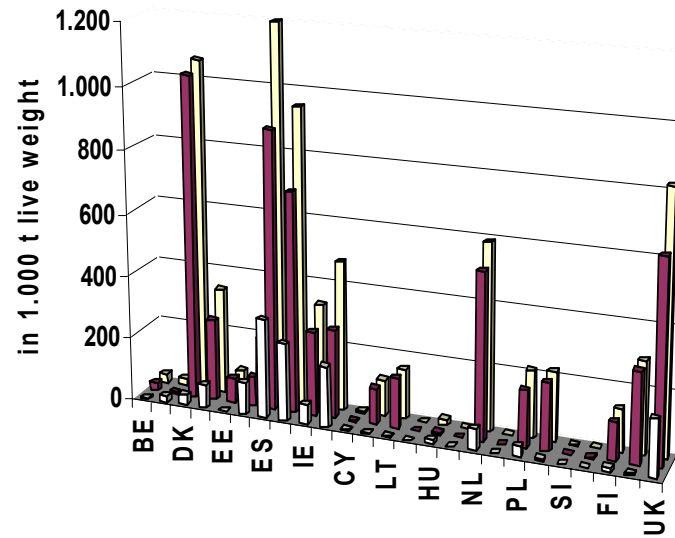
**World fish production by main players in 2003**  
(source: EUROSTAT)



	China	Peru	Japan	Indonesia	India	Chile	USA	Philippines	Thailand	Russian Fed	Norway	Iceland	EU25
■ Aquaculture (t)	38.636.065	13.818	1.327.361	1.228.559	2.215.590	633.085	544.329	1.448.504	772.970	108.751	582.016	6.214	1.374.958
□ Catches (t)	17.051.813	6.097.524	4.708.777	4.732.371	3.697.744	3.930.356	3.865.263	2.172.252	2.817.482	3.304.203	2.550.193	2.002.405	5.902.394
■ Total fish production (t)	55.687.878	6.111.342	6.036.138	5.960.930	5.913.334	4.563.441	4.409.592	3.620.756	3.590.452	3.412.954	3.132.209	2.008.619	7.277.352

**APPENDIX 4**

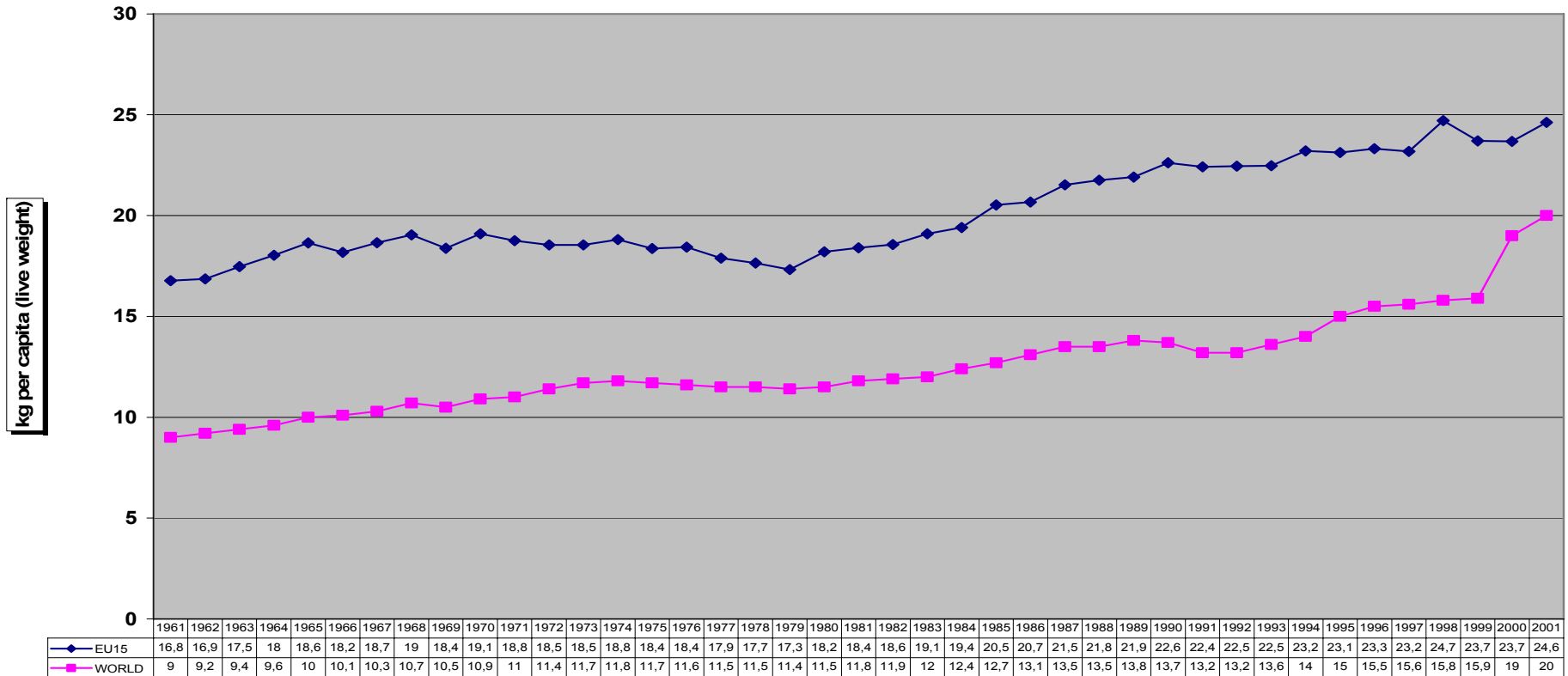
**EU25's catches and aquaculture production by Member State in 2003 (in live weight)**  
(Source: EUROSTAT)



	BE	CZ	DK	DE	EE	EL	ES	FR	IE	IT	CY	LV	LT	LU	HU	MT	NL	AT	PL	PT	SI	SK	FI	SE	UK
□ Aquaculture (x 1.000t)	1	20	32	74	0	101	313	246	63	192	2	1	2	0	12	1	67	2	35	8	1	1	13	6	182
■ Catches (x 1.000t)	27	5	1.031	261	79	92	887	702	266	283	2	115	157	0	7	1	526	0	180	213	1	2	122	287	639
□ Total fish production (x 1.000t)	28	25	1.063	335	79	193	1.200	948	329	475	4	116	159	0	19	2	593	2	215	221	2	3	135	293	821

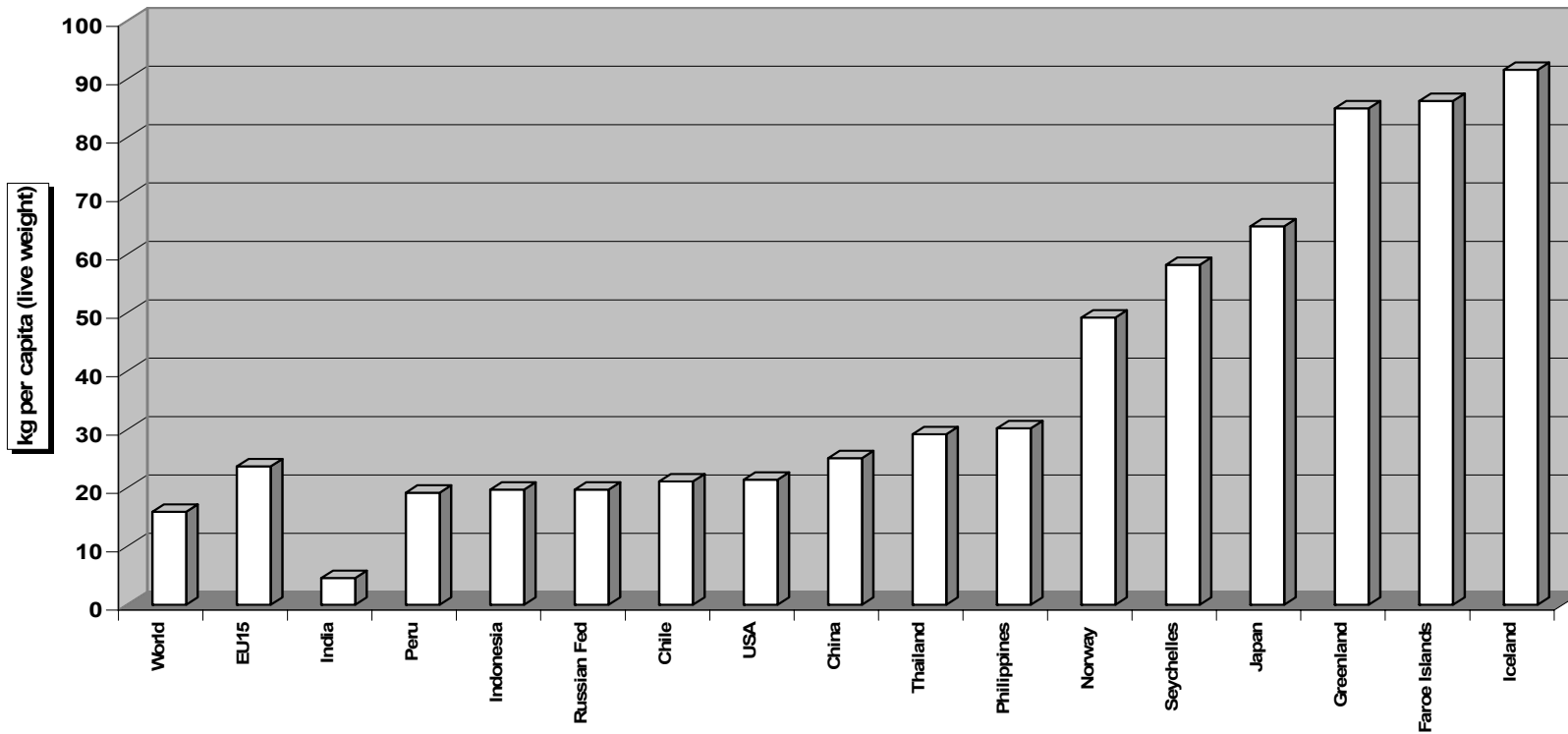
**APPENDIX 5**

**Evolution of world & EU15's per capita fish supply for food 1961 - 2001  
(in kg live weight) (Source : EUROSTAT)**



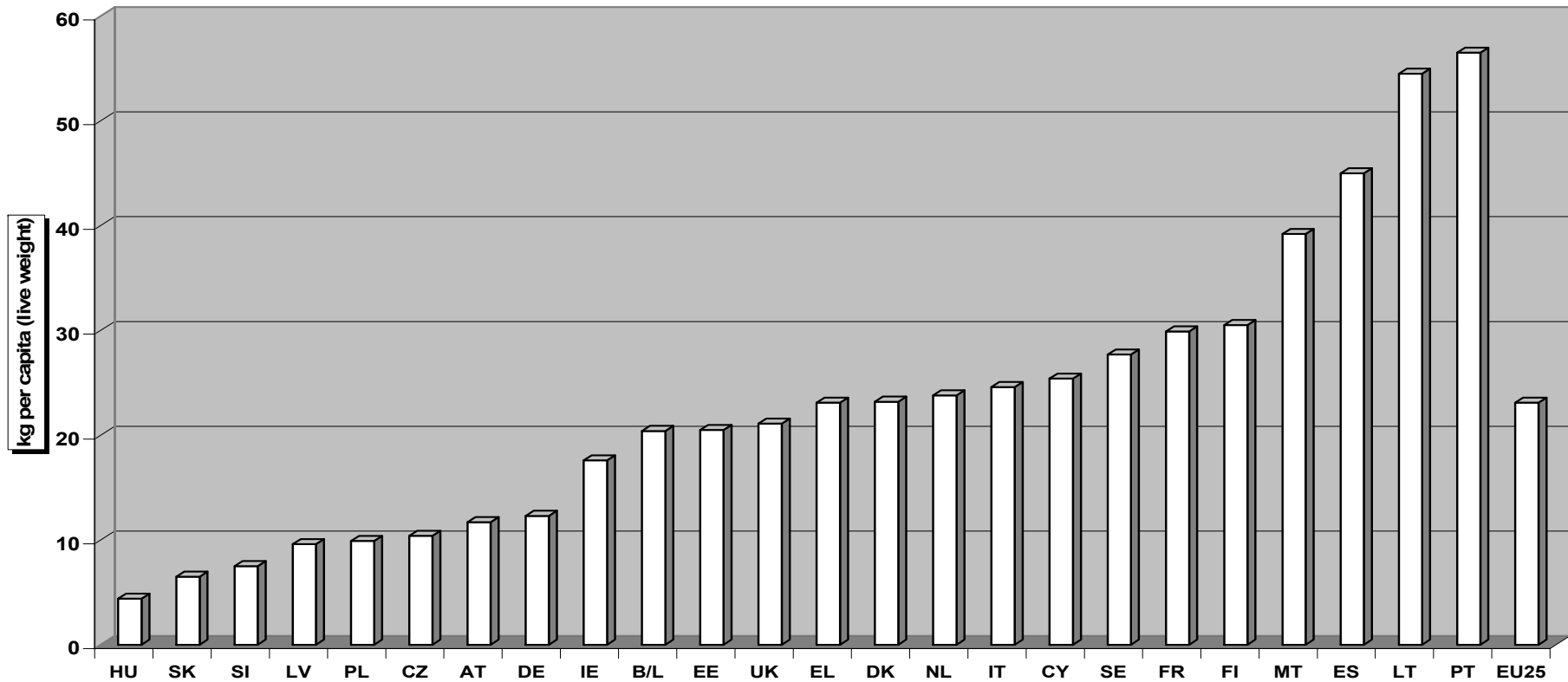
APPENDIX 6

**Comparison of per capita fish supply between EU15  
and main trade partners in 1999**  
(Source: EUROSTAT)



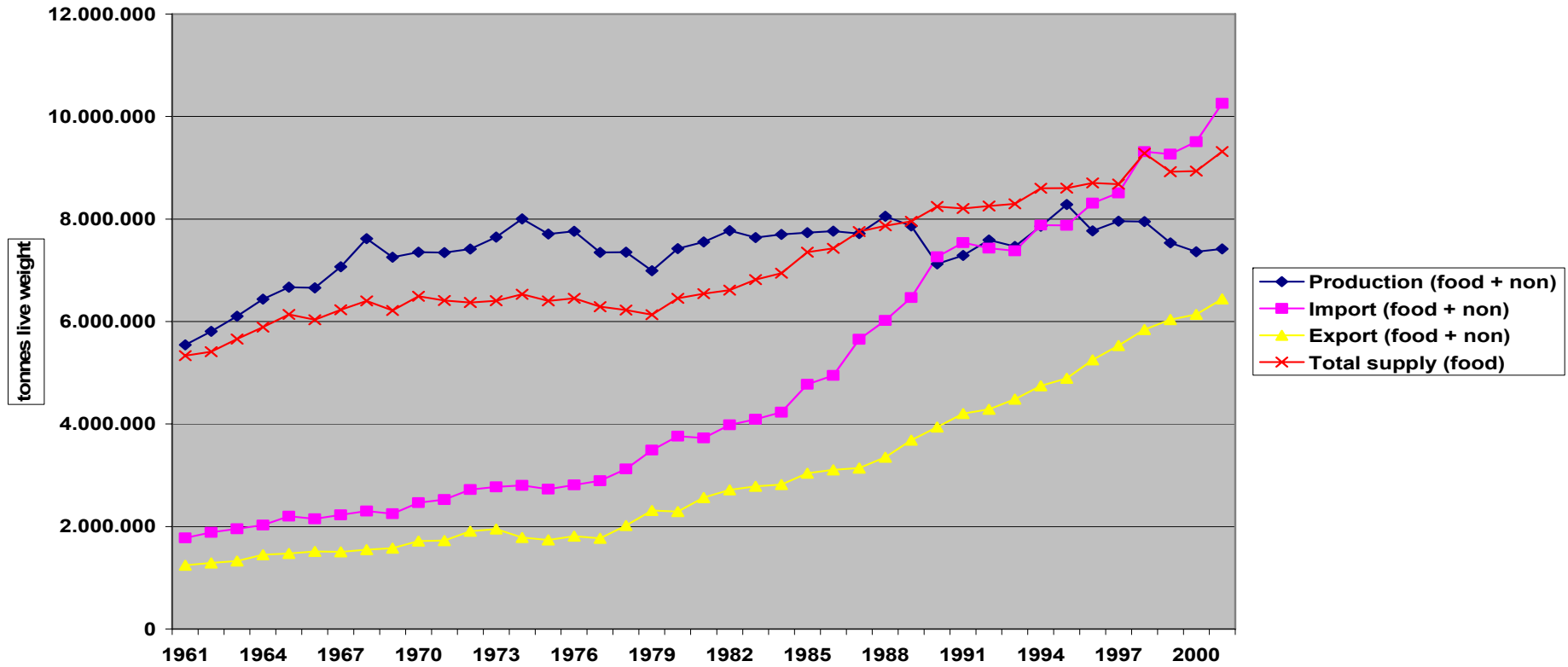
APPENDIX 7

**EU25's fish supply for food by Member State in 2001 (in kg live weight)**  
(Source: EUROSTAT)



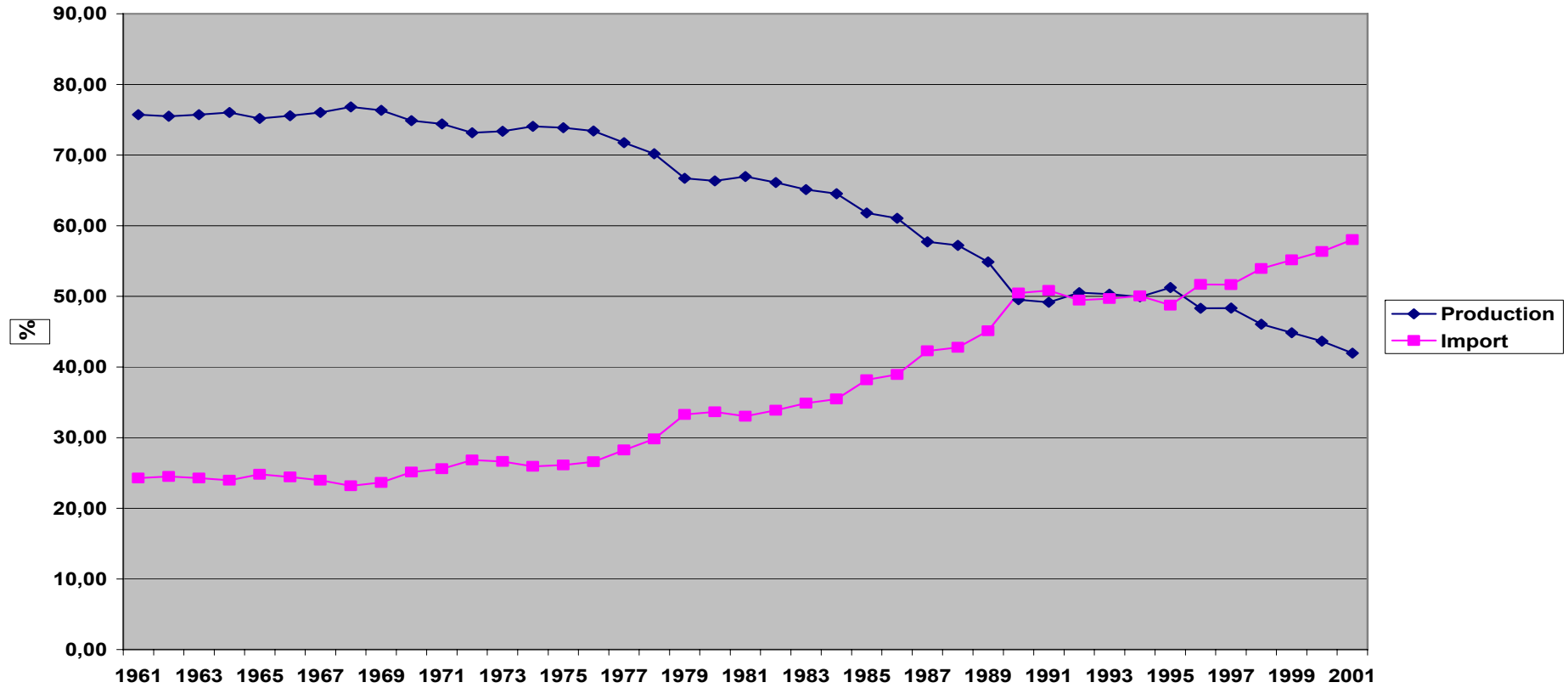
*APPENDIX 8*

**EU15's fish supply 1961 - 2001 (in tonnes live weight)**  
(Source: Eurostat)



APPENDIX 9

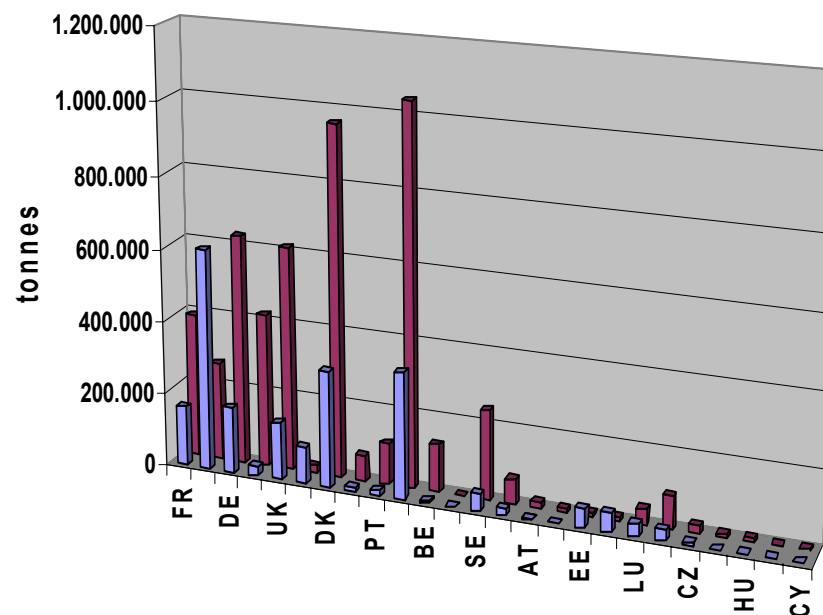
**Relation between EU15's fish production and imports 1961 - 2001**  
(in %) (Source: Eurostat)



APPENDIX 10

**Volume of EU25's trade in fishery products with third countries in 2004**

(Source: EUROSTAT)



	FR	NL	DE	IT	UK	IE	DK	EL	PT	ES	BE	LU	SE	FI	AT	MT	EE	LV	PL	CZ	SK	HU	SI	CY	
Export (t)	63.247	605.544	179.380	26.725	167.713	100.726	318.782	11.225	13.053	345.108	5.909	0	47.223	18.084	720	395	52.806	51.598	33.102	29.510	6.748	70	1.063	1.507	1.544
Import (t)	393.805	266.857	629.252	420.991	614.297	20.662	960.816	70.908	12.567	1.041.725	13.1678	1.409	245.005	67.074	16.606	11.583	10.682	10.699	41.522	88.675	21.320	8.166	9.321	3.281	4.670