



# HOSPICES CIVILS DE LYON

A HUMAN AND EXCELLENT MEDICINE, FOR EACH AND EVERYONE, THROUGHOUT LIFE

00/00/0000

ÉMETTEUR

**HCL**

**HOSPICES CIVILS  
DE LYON**

[www.chu-lyon.fr](http://www.chu-lyon.fr)

# HOSPICES CIVILS DE LYON

A HUMAN AND EXCELLENT MEDICINE, FOR EACH AND EVERYONE, THROUGHOUT LIFE

00/00/0000

ÉMETTEUR

**HCL**

**HOSPICES CIVILS  
DE LYON**

[www.chu-lyon.fr](http://www.chu-lyon.fr)

# FACILITIES

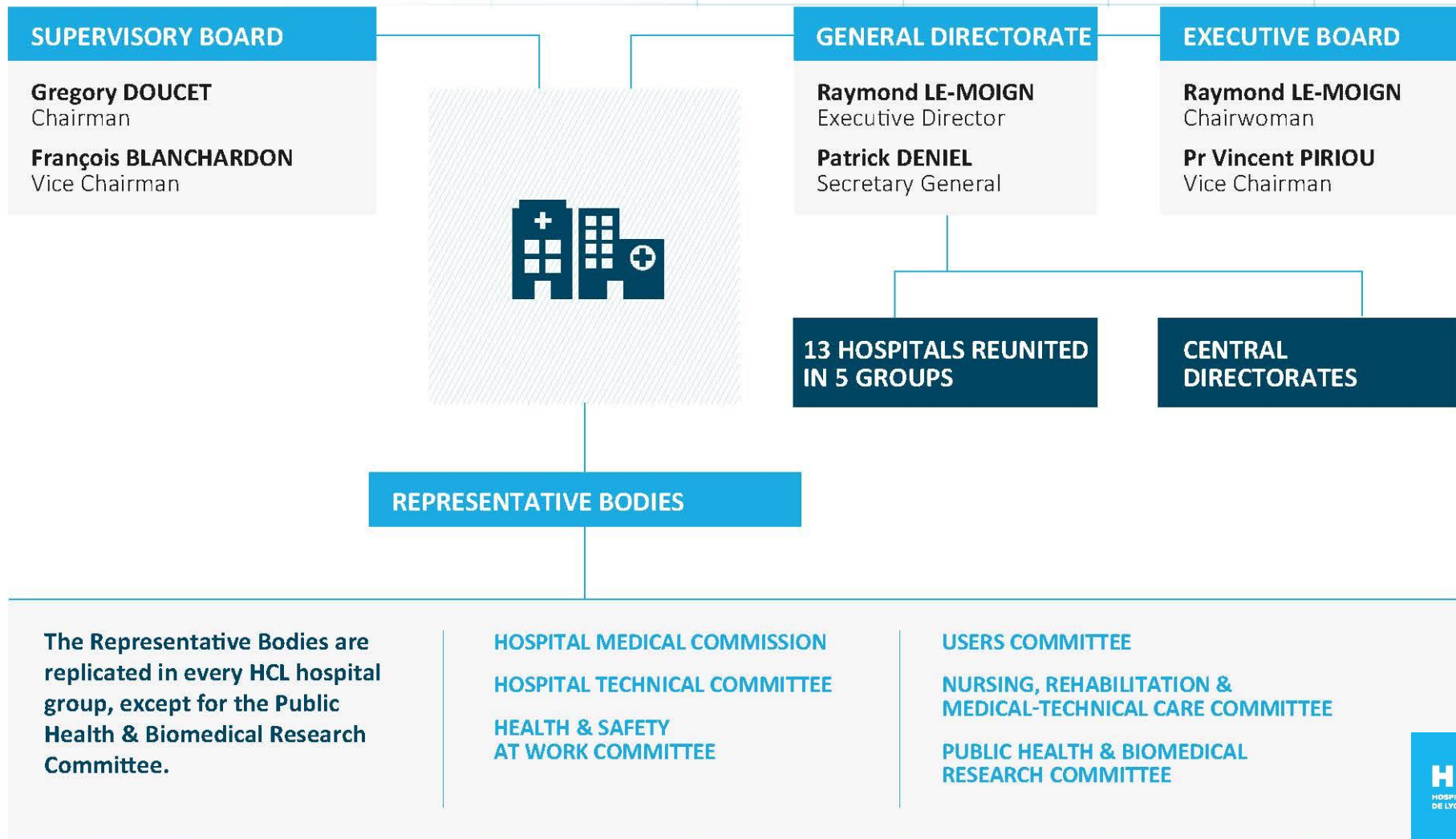
- With 200 years of medical history, Hospices Civils de Lyon is composed of 13 public hospitals of excellence, gathering all the medical and surgical disciplines.



# ORGANIZATION



Together, we form a community of 24 000 women and men, caregivers and others, sharing one and only vocation: cure and take care of each patient, no matter what his situation and his pathologies are, throughout life.

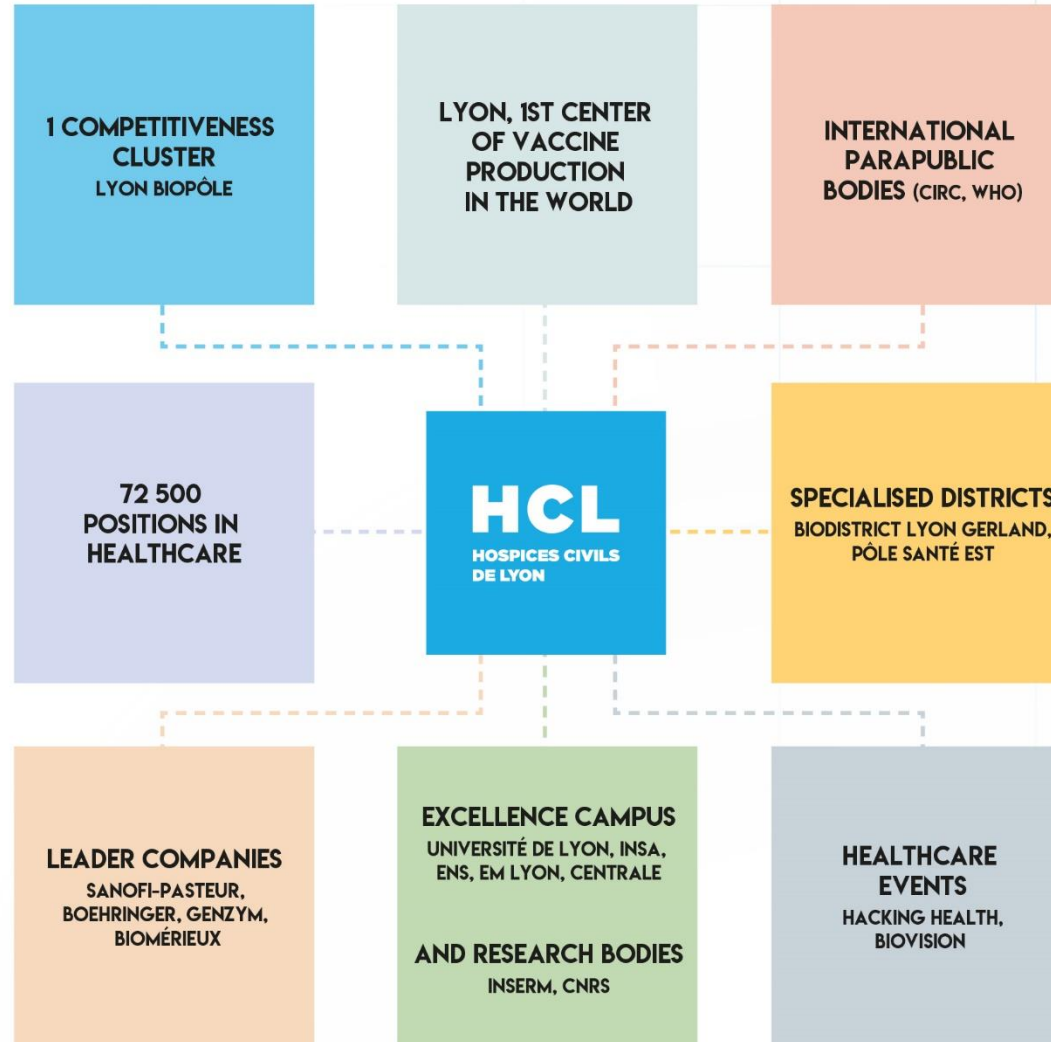


# CLOSE TIES TO THE CITY

# CLOSE TIES TO THE CITY

## AT THE HEART OF GREATER LYON'S HEALTHCARE ECOSYSTEM

- Innovative and dynamic metropolis thanks to a thriving legacy, Lyon is part of the ten biggest biotechnologies and health markets of Europe.
- In collaboration with all the health stakeholders of the territory, Hospices Civils de Lyon fully takes on the territorial responsibility.



# THE 3 MISSIONS OF HOSPICES CIVILS DE LYON

HOSPICES CIVILS DE LYON IS COMPOSED OF 13 PUBLIC HOSPITALS,  
ALL COMMITTED IN A TRIPLE MISSION:  
CARE, RESEARCH AND EDUCATION.

# CARE

- HCL community cares and takes care of all patients, 24/7, 365 days per year.
- HCL is the only french university hospital, with Paris AP-HP, that is able to take care of all pathologies.

## COMMUNITY CARE

Innovative and simplified treatment of all common illnesses, most frequently on an outpatient basis.

Present throughout the area to provide easier access to healthcare.

## PRIMARY HEALTHCARE

Treatment of rare or serious illnesses, requiring a high degree of medical expertise and cutting edge equipment.




Hospices Civils de Lyon operates numerous **national centers of reference for rare diseases and cancers.**



# INNOVATION

- HCL community puts research at the heart of its approach to contribute to medical and therapeutic innovation and to anticipate the future challenges.
- The university hospital is the main place for clinical research.
- Excellence thematics are, for instance :
  - Hepatology-infectiology
  - Oncology
  - Cardiology-nutrition-metabolism
  - Onco-hematology
  - Neurosciences
- Research is also :
  - 1 public health structure
  - 1 clinical investigation center (CIC) with 2 thematics
  - 3 clinical research centers (CRC)
  - 1 clinical trials center for precocious phasis (CLIP)
  - 1 biological resources center (CRB)
  - 1 OFSEP group
  - 1 common research laboratory HCL-Biomérieux-Université
  - 4 hospital-university federations (FHU)
  - 2 hospital-university institutes (IHU)
  - 6 hospital-university healthcare researches (RHU)

# EDUCATION

- Higher education of nearly **3 600**  healthcare professionals per year.
- In-service training for all employees to ensure that they remain at the cutting edge of expertise.

## MEDICAL TRAINING

Nearly  
**1 250**  
students,

Nearly  
**780**  
fellows,

in collaboration with the  
faculties of medicine,  
pharmacy and dentistry.

## PARAMEDICAL TRAINING

More than  
**1 600**  
paramedical staff  
and healthcare  
executives  
are trained at the  
10 specialized  
schools.

# HOSPICES CIVILS DE LYON IN FIGURES

# STAFF

IN 2019



MORE THAN **5 700** PHYSICIANS

(SENIOR PHYSICIANS, INTERNS  
AND STUDENTS)



MORE THAN **11 350** CAREGIVERS

MORE THAN **170** EDUCATIONAL AND SOCIAL STAFF

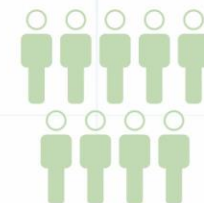
MORE THAN **1 360** MEDICAL-TECHNICAL STAFF



MORE THAN **2 730**  
TECHNICAL STAFF



MORE THAN **2 240**  
ADMINISTRATIVE STAFF  
INCLUDING **560** MEDICAL SECRETARIES



**100**  
NEWCOMERS  
(EACH MONTH)



**162**  
PROFESSIONS

12

# CARE

IN 2019



MORE THAN **1,3 MILLION**  
HOSPITALIZATION  
DAYS



MORE THAN **976 000**  
APPOINTMENTS



**367**  
TRANSPLANTS



**1<sup>ST</sup>** CANCER FIGHTER  
OF THE REGION



**290 760**  
VISITS TO THE EMERGENCY  
DEPARTEMENT



**78 769**  
OPERATIONS



**79**  
REFERENCE CENTERS  
«RARE DISEASES»



**11 263**  
BIRTHS



**3 MATERNITY WARDS**  
THAT CAN MANAGE  
PATHOLOGICAL  
PREGNANCIES AND  
PREMATURE BABIES

# RESEARCH

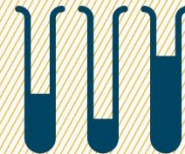
IN 2019



**2 496**  
SCIENTIFIC ARTICLES



**716**  
PROFESSIONALS  
DEDICATED TO  
RESEARCH



**2 368**  
CLINICAL TRIALS



MORE THAN **60 000**  
INDIVIDUALS ENROLLED  
IN RESEARCH PROGRAMS

# ROBUSTS !

IN 2019



**370**  
**DAYCARE PLACES**  
FOR CHILDREN OF THE STAFF



**930 000**  
SQUARE METERS  
OF HOSPITAL SURFACE



MORE THAN **800**  
HOUSING OFFERS  
FOR STAFF



**14 000**  
MEALS PREPARED  
EACH DAY  
FOR PATIENTS (65%)  
AND STAFF (35%)



**39 205**  
CALLS  
EACH DAY



**24 000 KILOS**  
OF LAUNDRY WASHED  
EACH DAY  
I.E. 4 800 FAMILY-SIZED LOADS

# OUR FINANCIAL METRICS

**1,95**

**BILLION EURO**

Of annual operating budget



**140 M€**

Investment/year

**5 M€**

Of surplus in 2018

A A1/prime1 grade from MOODY'S



# BIG PROJECTS

# ONGOING BIG PROJECTS...

<p><b>Hôpital Louis Pradel</b> &gt; finalization of the modernization project</p>	<p><b>Hôpital de la Croix-Rousse</b> &gt; construction of a building dedicated to infectious diseases &gt; expansion of the maternity ward and renovation of the neonatal resuscitation ward &gt; construction of a hospital hotel</p>	<p><b>Hôpital Lyon Sud</b> &gt;&gt; Restructuration of emergency rooms and operatif rooms (BAUREALS) and renovation of the neonatal resuscitation ward &gt; construction site to welcome the metro and organization of the Vallon &gt; installation of a Linac MRI</p>
<p><b>Hôpital Édouard Herriot</b> &gt; merging of the emergency rooms into renovated buildings M and N</p>		<p><b>Hôpital Henry Gabrielle</b> &gt; transfer of activities</p>
<p><b>Hôpital Pierre Wertheimer</b> &gt; construction of a radiotherapy center</p>	<p><b>2 sites transfers : A. Charial and H. Gabrielle</b></p>	

# INTERDISCIPLINARY ACTIVITIES

- BIOLOGY
- IMAGING
- PHARMACY

# BIOLOGY AT HCL

IN 2019

## KEY FIGURES



**3**

HCL biology centers



**1 000**

professionals  
including 200 doctors



**13,2**

million biology and anatomy-  
cytopathology analyzes  
each year



Analyzes realized for  
**1 200**  
external clients



**24.5 M€**  
revenue

## MULTI-SITE LABORATORY



The biggest multi-site  
biology and anatomy-cytopathology  
hospital laboratory  
in France

Biology and  
anatomy-cytopathology  
realized on each site



Specialized activities  
regrouped on one or  
two sites, depending on  
the clinical activities  
practiced here



# BIOLOGY AT HCL

## CUTTING EDGE EQUIPMENT

- Shared versatile technical installations that are automated.
- Equipment adapted to diverse specialized activities (molecular biology, mass spectrometry, L3 laboratories...).

## RESEARCH ACTIVITY / PRIORITY RESEARCH THEMES

- Cancer and onco-hematology
- Metabolism and nutrition
- Infectious diseases
- Immunology and inflammation
- Rares diseases : researches practiced within our national reference centers, or in association with reference centers of clinical services and two mixed services HCL/BioMerieux

# IMAGING AT HCL

IN 2019

## KEY FIGURES



**562 608**

imaging tests realized  
in 2019



**1 541**

tests per day



**644**

professionals  
including 159 doctors



**75.3 M€**

of revenue



**1 RIS**

information system  
unique radiology



**1 research**

committee  
for imaging



Implantation  
of imaging onto the  
**4 HCL groups**  
of hospitals

**A presence in 4 structures**

of clinical cooperations

with **4 partners**

(GIE-IRM Nord, GIE-Imagerie Sud, GCS-LUMEN CLB,  
GIE de médecine nucléaire)

and **one research structure**

(GIE CERMEP)



**1 PACS commun**

of 6 M. exams,  
nearly 280 TB of data

## COMPLETE OFFER

- Conventional and interventional imaging
- Scheduled imaging and permanence of care
- Imaging tests in the following fields :
  - Cardiological
  - Pneumological
  - Chest oncology
  - Urinary
  - Digestive
  - Musculoskeletal
  - ENT (ear, nose, throat)
  - Gyno-obstetrics
  - Pediatric et antenatal

## NEW AND HIGH TECH IMAGING EQUIPMENTS

- Beginning in 2016 of the **GOPI** partnership : a 12-year partnership to optimize the imaging equipments, with one of the leaders of industrial manufacturers: Philips Healthcare
- 3 years later:
  - Around **70% of the imaging equipments are brand new**, over the 80 of the total (40 heavy equipment such as MRI, scan, gamma camera, interventional rooms and 40 ultrasound scans) most of them high-end and some even ranked as technological innovation
  - **Imaging wards are renovated** when equipments are
  - A **continuous access to technological innovation and means dedicated to clinical research**, that allowed about twenty projects to come to life

# PHARMACY AT HCL

IN 2019

## KEY FIGURES



Over  
**104 000**  
chemotherapies  
produced



More than  
**26 000**  
parenteral nutrition bags



More than  
**190 000**  
instrumentation boxes  
sterilized by Central  
Sterilization



**81**  
publications realized



**548**  
professionals  
including 80 pharmacists



Retrocession  
**147**  
patients/ day

## STAKES

Development  
of clinical pharmacy  
Lien ville hôpital

Modernization  
of the function  
supply

Deployment of  
nominative dispensation  
of medications  
and unit dose delivery

Implementation of  
serialisation

Help to master  
pharmaceutical  
expenses

Medication  
innovative therapy



# PHARMACY AT HCL

## ONE PHARMACY FOR EACH GROUP OF HOSPITALS

- Gives the medicines to care unit and clinical pharmacy.
- Manages implementable medical devices.
- Activity of sterile and non sterile preparations
  - Chemotherapies
  - Parenteral nutrition
  - Radio-pharmacy
  - Fripharm platform and others
- Sells medicines to people.
- Pharmaceutical research (therapeutic optimizations et therapeutic care).
- Provides support and expertise for the realization of clinical trials.

## A CENTRAL PHARMACY

- Supplies medicines and medical devices to hospitals, some preparations, retrocession...
- Exceptional health situations
- pharmaceutical documentation center

## A CENTRAL STERILIZATION

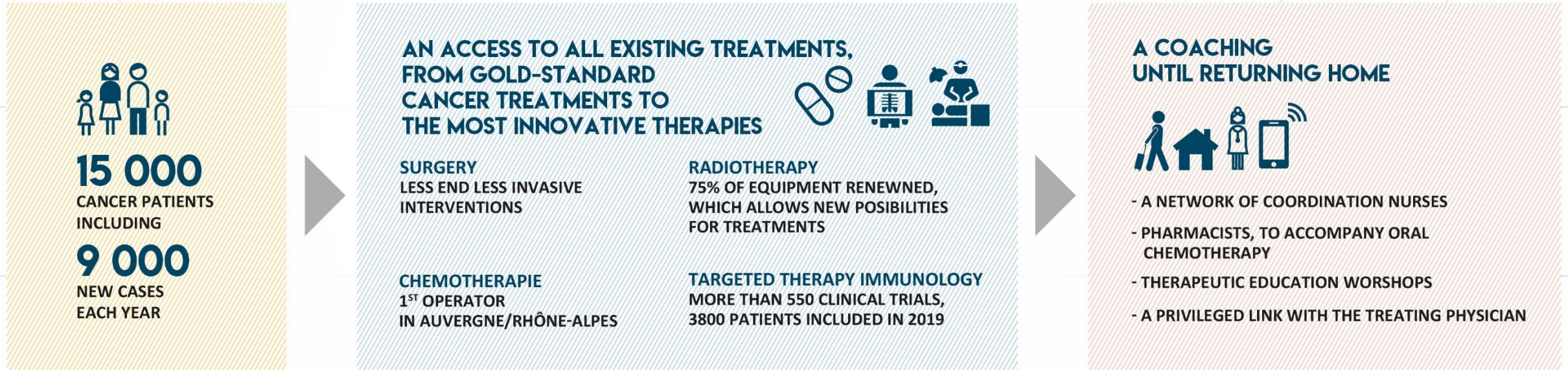
- Takes care of surgical instruments for each group of hospitals.

## SPECIALIZED INSTITUTES

- CANCEROLOGY INSTITUTE (IC)
- AGEING INSTITUTE (I-VIE)

# CANCEROLOGY INSTITUTE (IC)

## HCL, MAJOR CANCER FIGHTER IN AUVERGNE-RHÔNE-ALPES



**250**  
DOCTORS  
AND SEVERAL HUNDRED  
OF CAREGIVERS  
CARE ABOUT TAKING CARE  
OF THEIR PATIENTS

PSYCHOLOGISTS  
PHYSICAL THERAPISTS  
DIETETICIANS  
PHYSICAL ACTIVITY COACHES  
SOCIO-BEAUTICIAN  
ART-THERAPISTS...

# CANCEROLOGY INSTITUTE (IC)

- One of **the main cancer treatment centers** in Auvergne-Rhône-Alpes region.
- Its strengthen HCL's commitment concerning personalized care, in a reactive, attentive and respectful way towards the person.
- For patients, it is the insurance to benefit a **global and personalized care**, from diagnosis to follow-up, thanks to **multidisciplinary caregiving teams**.
- Access to **cutting-edge, last generation equipment**, in imaging, chemotherapy and radiotherapy, as well as the whole range of treatments and existing care.

# AGEING INSTITUTE (I-Vie)

IN 2019

## KEY FIGURES



**1558**

professionals  
including 144 doctors



**4** out-of-hospital mobile  
teams, including 1  
specialized in «Alzheimer  
disease and related»



**3**

medical  
hotlines



**+ THAN 7 346**  
external  
consultations



**33**

seats for day hospital



**287**

beds for geriatric medicine  
(short stay)



**390**

beds for follow-up and  
rehabilitation care



**388**

beds for long stay

## THE 3 PILLARS OF I-Vie

- **Care**  
by offering a  
smoother healthcare  
pathway.
- **Innovate**  
thanks to a clinical  
research center  
« ageing-brain-  
frailty ».
- **Train**  
with trainings  
adapted to geriatric  
occupations.

# AGEING INSTITUTE (I-Vie)

- Represents the **dynamic and interdisciplinary policy concerning elders**.
- Represents **25% of HCL beds** (hospitals dedicated to ageing or integrated services placed near equipment and emergency).
- I-Vie objectives
  - **Delay dependence** grâce à des consultations de prévention ou de dépistage.
  - **Maintain autonomy** of frail patients, by prioritizing outpatient medicine.
  - Offer a **care that is adapted to specific pathologies** and specialized primary healthcare.
  - Facilitate the healthcare pathway by reinforcing **collaboration with town doctors** and other healthcare professionals.
  - **Accentuate research and caregiver's training**, to highlight the discipline and its attractiveness.

**THANK YOU**

[www.chu-lyon.fr](http://www.chu-lyon.fr)



**HCL**  
HOSPICES CIVILS  
DE LYON